

Southwestern Oregon Community College Master Plan

May 19, 2008



CROW/CLAY & ASSOCIATES INC.
ARCHITECTURE AND PLANNING
LAND USE AND INTERIORS

Southwestern Oregon Community College Master Plan

Table of Contents

Introduction

Coos/Douglas County

- Focus Group Executive Summary
- Project Ranking and Rating Analysis
- Existing Facilities Surveys

- Master Site Plan
- Construction/Remodel Schedule
- Color Coded Site Plans
- Classroom “Needs” Analysis

Curry County

- Focus Group Executive Summary
- Curry Campus Facility Preliminary Area Requirements
- Preliminary Plans
 - Preliminary Site Plan
 - Preliminary Floor Plan
 - Preliminary Elevation

Appendix

Coos/Douglas County

- Detailed Focus Group Summary
- Focus Group Minutes
- Facility Index

Curry County

- Detailed Focus Group Summary
- Focus Group Minutes

Southwestern Oregon Community College Master Plan

Introduction

This document, Southwestern Oregon Community College Master Plan is intended to serve as a guide and resource for the implementation of improvements and/or remodel projects for the College's facilities.

The Master Plan study was initiated through a series of meetings (called Focus Groups) with college constituents in each of the communities served by the College. The purpose of the Focus Groups was to ascertain community member thoughts and perceptions on existing college services and what additional services the college might provide.

A review of the existing physical facilities also occurred. Written input from each facility user group was assembled and a documented tour and review of each facility took place.

A user group priority listing of proposed projects at the existing campus was initiated to aid in final determination of project priorities. Functional sequencing and project scope was considered in the final priority listing of projects.

Changes in curriculum, funding courses, the construction market and other opportunities and constraints both internal and external should be considered as individual projects are scheduled and undertaken. This plan should not be considered as a static document. A regular (perhaps yearly) review of progress and possible opportunities affecting upcoming projects should be planned.

The budgets and cost estimates for the prioritized projects included within this document were developed to give a relative magnitude of cost. Several of the projects were fairly well developed in terms of program and their respective budgets were more fully detailed. In all cases, however, a review of scope and budget should be undertaken as each project reaches its design and construction date to be sure that budgets are adequate and ample funding is available for its completion. Estimates are based upon 2008 dollars. Inflation should be taken into account at the time of construction.

Appreciation and thanks is directed to the College staff and administration. They displayed helpful positive attitudes and courtesy throughout the study period. Their critiques, comments and planning suggestions were immensely helpful and important in the preparation of this document.

Southwestern Oregon Community College
Focus Group Executive Summary
Coos and Douglas County

Meetings (called Focus Groups) were held in Coos Bay/North Bend, Reedsport/Lakeside, Bandon, Myrtle Point, Coquille and Powers to ascertain community members' thoughts and perceptions on Southwestern Oregon Community College's services, what additional services might be provided in their respective communities, and their ideas for improvements in programs and services at the main campus.

This Executive Summary of the Focus Group Meetings was prepared to allow the College Board to more quickly assimilate the information provided in the Focus Group Meetings. A more detailed summary and the original Focus Group Minutes are included within the Appendix for those readers that would like to review all the comments made in the meetings.

All of the comments and ideas noted in the Focus Group Meetings are categorized under the following subheadings:

- Community Trends
- Who We Need to Serve
- We Should Partner With and Provide Services in Conjunction With
- Our Campus Should
- Programs That Respond to Trends and Interests
- Can We Do This Also?
- Our Facility Desires
- Other Campus Programs or Possibilities
- Additional Comments
- Student Services
- Staffing Goals
- Program Content
- Community Connections
- Linking Courses

These subheadings were established either in the Focus Group Meetings or were created after the meetings to describe similar thoughts or perceptions gleaned from the Focus Group discussions.

Each community we visited indicated that the presence of the College in their respective community as being vitally important. All requested that the current level of service be maintained and increased.

The following, in the plan preparers opinion, are the primary concepts discussed during the focus group meetings.

Community Trends:

- Tourism and Hospitality industries are increasing along the South Coast.
- The population base along the South Coast is aging. We are gaining a larger retirement population of active seniors who are interested in life long learning and personal development.
- Medical and health care service demands are increasing.
- Long distance learning (on-line classes) are desirable.

Who We Need to Serve:

- Associate degree students and students preparing for a 4 year degree.
- Growing senior and retirement population.
- K-12 school students to facilitate transition to the community college.
- Individuals in the work force needing training and retraining.

We Should Partner With and Provide Services in Conjunction With:

- Local businesses.
- Local schools.
- Public entities i.e. cities, hospitals, police, fire, etc.
- Larger statewide institutions.
- Unions.

Our Campus Should:

- Be an example of sustainability.
- Establish a sense of identity.
- Provide complete accessibility.
- Feel and be safe.

Provide and/or Maintain "Programs" That Respond to Community Trends and Interests:

- Hospitality Management and Service Industry Programs.
- Fire Science and E. M. T. Programs.
- Industrial and Vocational Programs.
- Horticulture Programs.
- Medical Technology, Medical Services and Health Care Programs.
- Geriatric Care Programs.
- Construction Trades Programs.
- Business Management Programs.
- G. E. D. Programs.
- Sustainability Forestry and Wood Remanufacturing Programs.

- Programs that transfer for 4-year degree.

Can We Also Do This?

- Accommodate short course programs.
- Conference add-ons with food service and housing.
- Make campus “student” friendly, i.e. student art and student center.
- Promote recycling.

Our Facility Desires:

- Flexible spaces and facilities.
- Provide for technological advances.
- Create a student commons “coffee central”.
- Improve employee accommodations.
- Develop comprehensive maintenance and repair plans.
- Improve the facility and site environment to facilitate learning, safety and comfort.

Other Campus Programs and Possibilities:

- Promote a Student Health Center.
- Expand 4 year degree offerings.
- Provide a second campus entrance.
- Provide child care and single parent student housing.

Additional Comments:

- Increase library hours and services.
- Create a flagship program - be the best at something.

Student Services:

- Facilitate a College exit strategy.
- Facilitate job search and placement or transfer needs.
- Provide intermural sports.
- Facilitate student to staff connection and interaction.

Staffing Goals:

- Maintain strong administrative leadership.
- Recruit and retain “top people”.
- Regularly evaluate and project staffing needs and requirements.

Program Content:

- Include “Job Ethics” discussions in all programs.

- Promote citizenship and community responsibility.
- Promote customer service and social skills.

Community Connections

- Maintain and increase the presence the College has in each community.

Linking Courses

- Develop course work in each discipline that links to other disciplines.

Project Ranking and Rating Analysis

Each facility on campus was reviewed to ascertain compatibility with use, functionality and maintenance needs. A listing of each reviewed area is included in this section. Please refer to the map key number and to the campus map tabbed as Master Site Plan to determine facility location.

To assist in the evaluation of each facility, user groups were asked to list their individual concerns and/or needs and relay those items to a building representative, we also toured the facilities and reviewed the assembled lists of concerns and needs.

Due to the extensive list of “needs” of each building it was determined that a priority system of work was required.

A meeting was held in which each of the building’s representatives was provided with information that documented the needs of the other building representatives. A discussion of criteria needed to establish priorities occurred and criteria for setting priorities were established. Criteria were as follows:

- Health and safety of occupants
- Student population needs
- Perception of potential students and visitors

Each building leader was asked to rank each building requiring work based upon the above criteria. The results of the voting is shown below. The building with the highest scores receives highest priority.

<u>Building</u>	<u>Ranking</u>
Tioga Hall 1-5 Floors	34
Dellwood Hall	27
Sitkum Hall	25
Randolph Hall	23
Stensland Hall	19
Sunset Hall	15
Prosper Hall/Gym	13
Empire Hall/Hales Center	12
Eden Hall	11
Family Center/Child Care	8
Lampa Hall	7
Sumner Hall	7
Newmark Center	5
Field House	5
Fairview Hall	4
Coaledo Hall	3
Fire Science and Fire Tower	3
Umpqua Hall	3

Athletic Fields	2
Oregon Coast Culinary Institute	1
Student Recreation Center	0

It was also initially determined that in the interest of efficiency and cost each building would have its basic needs addressed completely rather than working on a building and completing only part of its needed upgrades. This approach would eliminate the potential of redoing recent work at a later date that might be affected by a future remodel.

Other factors such as relocation of existing function to accommodate a new function was factored into the final project construction/remodel schedule.

Athletic Fields

Map Keys #15,18,20,26

Tennis Courts
Baseball Field
Softball Field
Track/Soccer Field

Use: Athletic Activities, Softball, Baseball, Soccer, Track, Tennis Courts

Maintenance and Improvement Items:

- Improve surface drainage at south and west of track/field
- Improve drainage at perimeters of fields
- Provide paving in area between parking, backstop and field house - accessibility
- Move parking bumpers behind Fairview to open up parking

Space Adjustments:

- Provide bleachers for 500-600 people at track/field - bleachers each side
- Cover tennis courts and provide lighting
- Provide javelin and hammer throwing area - 240'-0" distance required
- Provide public concessions and press box at baseball field
- Provide storage facilities at south end of track/field
- Increase storage at softball field

Notes:

- Road realignment is required for bleacher installation on the east side of the field

Coaledo Hall
1965 - 9,800 Square Feet

Map Key #7

Use: Science Labs, Classrooms, Offices

Maintenance and Improvement Items:

- Heating, ventilation and air conditioning replacement
- Relamping and lenses on lights - new ballasts as required
- Replace single pane glazing with insulated units
- Repair broken faucets and flush valves in restrooms
- Replace three chemical fume hoods
- Repair plumbing at lab benches
- Painting and finish upgrades
- Upgrade electrical, data and equipment
- Replace roof vent screens - health issue

Space Adjustments:

- Provide flexible classroom spaces/sizes
- Provide additional built-in storage

Notes:

- Suitable seating and desks in classrooms
- Asbestos tile in good shape
- This building would be a good location for a grade level library

Dellwood Hall
1965 - 9,375 Square Feet

Map Key #2

Use: Student Services

Maintenance Items:

- Heating, ventilation and air conditioning replacement
- Improve lighting relamping and lenses on lights - new ballasts as required
- Replace single pane glazing with insulated units
- Upgrade and remodel restrooms - meet accessibility requirements
- Replace roof vent screens - health issue
- Upgrade electrical, data and equipment
- Door hardware replacement
- New carpet
- Provide additional storage area
- Insulate walls as possible
- Painting and finish upgrades

Space Adjustments:

- Enhance First Stop area
- Complete and/or delete courtyard and use space
- Update conference area
- Provide employee break area
- Relocate business center

Notes:

- Some asbestos encapsulated
- Security issue - open up visibility in First Stop area

Eden Hall

1982 - 9,111 Square Feet

Map Key #8

Use: Art, Sculpture, Classrooms, Offices

Maintenance and Improvement Items:

- Replace glazing with broken seals
- Upgrade heating, ventilation and air conditioning systems
- Repair/replace interior and exterior door locks
- Provide clay separator traps for sinks in Eden 7 and 5
- Repair lighting in clerestory units
- Repair drinking fountain in lobby
- Upgrade electrical service and panel to Eden 5
- Provide drop cords for work stations
- Repair moisture infiltration through concrete block walls

Space Adjustments:

- Kiln area size increase would be helpful

Notes:

- Reconstruct covered walkways between adjacent buildings

Empire Hall/Hales Center for the Performing Arts

Map Key #4

1980 - 17,189 Square Feet

2001 - 21,890 Square Feet

Use: Cafeteria, Meeting Rooms, Offices, Performing Arts Center

Empire

Maintenance and Improvement Items:

- Repair damaged flooring
- Repair leaking skylight in cafeteria area
- Replace carpet in student government area
- Recondition or replace heating, ventilation and air conditioning system
- Paint and finish upgrades
- Provide acoustic dampening in cafeteria
- Remodel all restrooms
- Nonslip surface needed on bridge
- Provide operable windows

Space Adjustments:

- Develop more dining area
- Enlarge dishwashing area
- Enlarge food preparation area
- Develop table bussing area
- Enlarge food service area and organize better

Performing Arts Center

Maintenance and Improvement Items:

- Repair floor in prop area
- Review and implement acoustic improvements in Main Hall
- Provide additional lobby lighting
- Add light control in 207
- Modify speakers to eliminate stage feedback
- Modify house lighting to allow lamp access
- Separate alcove lights from stair circuit
- Consider lift for stage area - back of stage
- Replace single glazed window units
- Speakers in lobby for intermission chimes
- Provide center isle in seating
- Control lobby lights from PAC sound, light booth
- Provide intercom communication between sound, light booth and ticket office
- Entrance and side entrance light should be dimmable with house lights
- Improve smoke vent door operations

- Provide sound insulation between Storage 216 and offices.

Space Adjustments:

- Construct black box theater
- Remodel current ADA restroom - too small

Notes:

- Replace outdoor units M1 and M2
- Provide acoustic separation for “black box” theater

Fairview Hall
1965 - 9,800 Square Feet

Map Key #14

Use: Machine/Welding Shops, Offices

Maintenance and Improvement Items:

- Convert non-functional electric space heaters with new natural gas units
- Provide natural gas to shops for torches and cutting machines
- Add 480 volt 3 phase outlet for sheet metal shear
- Add 480 volt 1 phase outlets to hydraulics/pneumatics
- Relocate electrical drop boxes for machine relocations
- Reconfigure/rebuild exhaust system in grinding room
- Convert heating to natural gas
- Repair roof leaks and roof drains
- Add additional 480/240 volt 3 phase power
- Power system upgrades

Space Adjustments:

- Enclose east overhang to allow use of this area for working space and add exhaust system
- Expand space for welding stations
- Enclose existing heating system equipment

Notes:

- Add "Electronic Classroom" equipment to classroom
- Reconstruct covered walkways between adjacent buildings
- Cluster manufacturing work

Family Center/Child Care

1997 - 5,798 Square Feet

Map Key #30

Use: Childcare Center, Offices

Maintenance Items:

- Repair kitchen counters and general finishes
- Painting and finish upgrades

Space Adjustments:

- Add parent room
- Larger kitchen
- Revise parking, pick up and drop off configuration
- Additional storage inside/outside
- Larger covered outside play area
- Additional office spaces

Notes:

- A connection to the Newmark Center is planned with the current area in between being used from proposed expansion

Field House
1997 - 4,800 Square Feet

Map Key #16

Use: Indoor Baseball Practice

Maintenance and Improvement Items:

- Improve lighting
- Add floor surface
- Improve heating and ventilation systems
- Paint and clean up

Space Adjustments:

- None requested

Notes:

- Add floor surface to building to allow multi-use - synthetic
- Provide stronger connection to rest of campus

Fire Science and Fire Tower

Map Key #17/19

1974 - 1,800 Square Feet
1981 - 952 Square Feet (Fire Tower)

Use: Fire Science Classes

Maintenance Items:

- None noted due to desire to relocate entire program to new facilities

Space Adjustments:

- The Fire Science programs will be relocated to new facilities

Notes:

- Fire Science building to be scheduled for alternative use in the future. Fire Science program to be relocated off campus.

Lampa Hall
1982 - 3,760 Square Feet

Map Key #9

Use: Offices

Maintenance or Improvement Items:

- Improve lighting - re-lamp, replace ballasts and lens - review light levels
- Repair skylight leaks
- Create recycling area
- Repair foyer roof leaks
- Painting and finish upgrades
- Replace glazing with broken insulated unit seals
- Sun screen west side of building
- Improve ventilation
- Improve landscaping
- Repaint/replace hardware to allow consistent locking

Space Adjustments:

- Reconfigure large room (Lampa 1) at north end into faculty offices and meeting room, add windows
- Provide more faculty offices
- Add storage cabinetry
- Provide copy/work room
- Provide computer station in lobby for students

Notes:

- Reconstruct covered walkways between adjacent buildings

Newmark Center
1996 - 35,242 Square Feet

Map Key #29

Use: Offices, Classrooms, State Services

Maintenance and Improvement Items:

- Resurface entry walkway - brick is too slippery
- Provide operable exterior windows
- Repair heating, ventilation and air conditioning system
- Restripe parking to provide compact car designation
- Remodel kitchen
- Provide additional parking lot entry and exit points

Space Adjustments:

- Provide additional storage space
- Provide additional meeting rooms
- Provide additional women's restroom stalls

Notes:

- Reinforce connection to rest of the campus
- Convert upper floor into classrooms and offices for future campus use

Oregon Coast Culinary Institute

2006 - 15,000 Square Feet

Map Key #31

Maintenance and Improvement Items:

- Floor drains in most areas do not work - located at high spot
- Grout lines too depressed, hard to clean
- Foyer overheats
- Remove occupancy sensors on lights
- Relocate hand sink closer to cook lines
- Make janitor closets more useful, add mop hooks, remove some shelves
- Change out pull down outlets that trip off under load
- Add shelving to Closet 130A
- Add floor sink by deck ovens in bake shop
- Add walk-in cooler in bake shop

Space Adjustments:

- Provide more refrigeration storage
- Provide more walk-in storage
- Add reach-in coolers in labs

Notes:

- Facility is new and layout functions well

Prosper Hall/Gym
1967 - 25,835 Square Feet

Map Key #21

Use: Gymnasium, Offices

Maintenance and Improvement Items:

- Replace gymnasium area lighting for consistent light levels
- Replace electric boiler
- Add windows to offices on east/west sides

Space Adjustments:

- Add covered or enclosed walkway between Student Recreation and Prosper
- Add accessible restrooms on main gym floor level
- Enclose west side - aluminum storefront system
- Construct parking on north side of building
- Reconfigure lower level for locker/team rooms

Notes:

- Finish Prosper as originally planned
- Expand into area between Prosper Hall and Rec Center

Randolph Hall
1964 - 12,836 Square Feet

Map Key #3

Use: Computer Services, Classrooms, Offices

Maintenance Items:

- Heating, ventilation and air conditioning replacement
- Improve lighting, relamping and lenses on lights, new ballasts as required
- Electrical and data upgrades
- Replace single pane glazing with insulated window units
- Restrooms to be upgraded and remodeled to meet accessibility requirements
- Provide new window coverings
- Insulate walls as possible
- Painting and finish upgrades

Space Adjustments:

- Create conference room
- Remodel Integrated Technology Services Department:
 - Additional 600 square feet
 - 6 enclosed offices
 - Meeting/conference room
 - Training room for about 4-6 workstations
 - Machine/break room for printers, fax, copier and small table
 - Network and server testing area with office area for Network Technician Specialist
 - Large storage room for equipment and parts
 - Storage cabinets
 - Carpet in most offices
 - New floor and remove asbestos tiles
 - One main secure door
- PC Technician Room:
 - One secure door for student support access
 - Work benches
 - Three technician desk areas
- Server Room:
 - Raised floor "Clean Room"
 - Conditioned air on power backup system separate from building HVAC
 - Size at least 12' x 24'
 - Very secure
 - Fire suppression
 - Environmental and video monitoring equipment
 - Adequate electrical power

- Switch Room:
 - Raised floor “Clean Room”
 - Conditioned air on power backup system separate from building HVAC
 - Very secure
 - Fire suppression
 - Emergency lighting
 - Environmental and video monitoring equipment
 - New 4" conduit into switch room
 - Adequate electrical power
- Tutoring Center Remodel:
 - Provide a soundproof small group room
 - Provide an administrative office

Notes:

- Repair/replace south wall and walking surface at southwest corner of building
- Tutoring services to be relocated in future

Sitkum Hall

1965 - 10,240 Square Feet

Map Key #6

Use: Classrooms/Offices

Maintenance Items:

- Heating, ventilation and air conditioning replacement
- Relamping and lens on lights, new ballasts as required
- Replace single pane glazing with insulated units
- Restroom to be upgraded and remodeled to meet accessibility requirements
- Replace roof vent screens - health issue
- Upgrade electrical data and equipment
- Replace chalkboards with white boards
- Insulate walls as possible
- Carpet in offices
- Painting and finish upgrades

Space Adjustments:

- Provide additional storage area

Notes:

- Asbestos tile in good shape
- Could use weather vestibule
- Roof condition - no leaks noted
- Replace unit ventilators with hydronic
- Install boiler
- Review ducted exhaust system in corridor in lieu of plenum

Stensland Hall
1995 - 14,041 Square Feet

Map Key #1

Use: Bookstore, Classrooms, Offices

Maintenance and Improvement Items:

- Improve ventilation at all locations (operable windows)
- Improve heating and cooling system
- Replace front doors with workable system
- Provide nonslip entry floor surface
- Soundproof testing area and improve lighting
- Provide alternative to fluorescent lighting
- Painting and finish upgrades. Particularly carpet in bookstore and ESPS area
- Repair/replace slat walls in bookstore
- Repair broken faucets in restrooms
- Sound proofing needed between first and second floors
- Enlarge doorway to provide better accessibility

Space Adjustments:

- Need additional storage throughout the building
- Need private offices for counselors
- Relocate campus testing centers to one area
- ESPS area needs to be enlarged and have privacy
- Need dedicated classroom for HD classes
- Need additional space for career center and SSS center
- Need additional custodial space

Notes:

- Expand bookstore area

Student Recreation Center

2006 - 17,500 Square Feet

Map Key #25

Use: Student/Staff Recreation, Classrooms

Maintenance and Improvement Items:

- Front doors to operate properly
- Security cameras at entrances and hallways
- Alarm unattended entry/exit doors
- Provide alternative to dryer vent lint collection
- Provide non-slip flooring outside showers
- Improve drainage to floor drains outside showers
- Add timer to lighting controls in racquet ball court
- Provide bleachers, scoreboards, shot clock and audio system in gym
- Electronic raising/lowering of backboards in gym

Space Adjustments:

- Additional lockers and locker space
- Add bouldering wall

Notes:

- Connect to Prosper Hall - covered/enclosed walkway
- Use space between Prosper Hall and Recreation Center for future facilities

Sumner Hall
1982 - 8,440 Square Feet

Map Key #13

Use: Nursing Program, Classrooms, Offices

Maintenance and Improvement Items:

- Improve wiring to SIM room
- Heating, ventilating and air conditioning improvements
- Remodel restrooms - need more women's stalls - accessible
- Repair skylight and other area roof leaks
- Painting and finish upgrades, replace carpet
- Replace windows with broken seals
- Repair and/or replace damaged ceiling tile
- Provide electrical and data system upgrades
- Float level sloped floors
- Storage cabinets wrong size - replace
- Add additional white boards
- Add outlets for laptops in classrooms

Space Adjustments:

- Need larger SIM control room
- Need pediatric SIM space
- Need cadaver space
- Need separate computer room (currently shared with other uses)
- Need separate simulated nurses station
- Need additional lab storage area and central supply
- Need SIM room debriefing area with large screen TV, separate room from small meeting area
- Need two more full time faculty offices, Part time faculty offices - 7 offices required
- Need separate lecture room in addition to the existing classroom
- Need separate EMT teaching station. Set up time a problem (Fire Program).
- Need horticulture office
- Need more space for dirty and clean utility functions

Notes:

- Reconstruct covered walkways between adjacent buildings

Sunset Hall

1982 - 6,840 Square Feet

Map Key #12

Use: Music, Performance Space, Office

Maintenance and Improvement Items:

- Repair skylight leaks
- Replace counter tops in restrooms
- Replace windows with broken seals
- Install exhaust fans in restrooms
- Increase communications/data capacity (wireless)

Space Adjustments:

- Additional practice spaces
- Sheet music and recording storage
- Instrument storage for students
- Classroom spaces, composition space and ensemble area required

Notes:

- Reconstruct covered walkways between adjacent buildings

Tioga Hall 1-5 Floors

1969 - 56,144 Square Feet

Map Key #5

Use: Offices, Computer Lab, Library, Print Shop/Media Services/Remote Learning

Maintenance and Improvement Items:

- Improve heating, ventilation and air conditioning
- Increase electrical distribution throughout building
- Paint and finish updates
- Exhaust system in print shop
- Install fire suppression system in library
- Update flooring
- Improve lighting, relamping and lenses on lights, new ballast as required
- Brace library stacks for seismic restraint
- Update restrooms, men's/women's - all floors

Space Adjustments:

- Provide handicap accessible restrooms - all floors
- Revise size of entrances to women's restrooms - all floors
- Increase usable space in Mail and Print Services
- Mail and Print Shop to be interconnected
- Print Shop Storage adjacent to Print Shop (now in B2-B3)
- Need storage/work space increased - all floors
- Add study group rooms to library
- Need additional private meeting area in Human Resources
- More effective and efficient library desk configuration

Notes:

- Floor is deflecting on second floor under book stacks
- Secure mail boxes for faculty/staff
- Possible increase in electrical capacity
- Acoustics between private spaces is a problem

Future Plans:

- Relocate Library to Coaledo
- Move Administration to second floor
- First floor to become Print Shop
- Relocate media services to Randolph
- Expand computer lab to all of third floor

Umpqua Hall
1964 - 11,680 Square Feet

Map Key #24

Use: Electronics Lab and AutoCad/Computer Classes

Maintenance Items:

- Heating, ventilation and air conditioning replacement
- Large overhead doors - need paint
- Replace single pane glazing with insulated units
- Remove large abandoned tank from west side
- Replace rusted exterior doors
- Repair photocell that is not working
- Upgrade lighting and repair switching
- Painting and finish upgrades
- Repair leaks in roof

Space Adjustments:

- Spaced is currently shared with Food Bank

Notes:

- Lower floor in old garage area to be repaired and leveled. Hydraulic lift pits to be filled in.
- This location would be ideal for future student services location and “coffee central” Additional food service venue on campus also possible.



MASTER SITE PLAN
CONSTRUCTION AND REMODEL

The plan shows a large campus area with various buildings, parking lots, and sports facilities. Key features include:

- Parking Lots:** LOT 1, LOT 2, LOT 3, LOT 4.
- Buildings and Sites:** FUTURE CLASSROOM, FUTURE BUILDING SITE, MUSIC ADDITION, STUDENT CENTER ADDITION, HEALTH & SCIENCES, FUTURE STUDENT HOUSING, FUTURE SPORTS PARKING, FUTURE BLEACHERS, PROPOSED FAMILY CENTER ADDITION.
- Sports Facilities:** HAMMER/JAVELIN, GREEN HOUSE, STORAGE ADDITION, BLOCK SCREEN, PROPOSED STM CONNECTION.
- Infrastructure:** NORTH EXIT ROADWAY, NEWMARK, FUTURE BRIDGE, NEW UNDERGROUND POWER LINE.
- Numbered Areas:** 1 through 51, indicating specific zones or projects.

A north arrow is located in the top left corner. The logo for CROW/CAY & ASSOCIATES is in the bottom right corner.

1. Stensland Hall	11. Greenhouse(Future Removal)	22. Poet's Eye Outdoor Theater	STUDENT HOUSING:	42. Umpqua River
2. Dellwood Hall	12. Sunset Hall	23. B-3 Maintenance Warehouse(Future Removal)	32. North Head	43. Cape Arago
3. Randolph Hall	13. Summer Hall(Future Classroom)	24. Umpqua Hall(Proposed Student Center)	33. Lighthouse Depot	44. Coquille River
4. Empire Hall/Hales	14. Fairview Hall	25. Student Recreation Center	34. Willamette River	45. Cape Blanco
Center for the Performing Arts	15. Tennis Courts	26. Track/Soccer Field	35. Warrior Rock	46. St. George Reef
5. Tioga Hall	16. Field House	27. Plant Services/Maintenance (Relocated)	36. Desdemona Sands	47. Bratney Point
6. Sitkum Hall	17. Fire Science(Future Removal)	28. Greenhouse	37. Point Adams	48. Trinidad Head
7. Coaledo Hall(Future Library)	18. Baseball Field	29. Newmark Center	38. Tillamook Rock	49. Willapa Bay
8. Eden Hall	19. Fire Tower(Future Removal)	30. Family Center/Child Care	39. Cape Meares	50. Gray's Harbor
9. Lampa Hall	20. Softball Field	31. Oregon Coast Culinary Institute	40. Yaquina Head	
10. B-2 Judo/Karate(Future Removal)	21. Prosper Hall/Gym	51. Neighborhood Facility Building	41. Heceta Head	
		52. Electrical Vault		



CROW/CAY & ASSOCIATES INC.

ARCHITECTURE AND PLANNING
LAND USE AND INTERIORS

Construction/Remodel Schedule

Est. Cost 2008 Dollars \$5,000,000 + site work	Priority	Date	Remarks
	Curry Campus	2008-2010	Permit work in process
	Javelin/Hammer Fields	Ongoing	Ready before May
	2 Dellwood - HVAC	Ongoing	Upgrade - Bidding in June
\$ 1,024,000	6 Sitkum	2009-2010	HVAC/Remodel - \$100/sq. ft.
\$ 650,000	27 Maintenance - Relocate & Demo Existing	2009	Need temporary security office - will eventually be in Stensland
\$ 100,000	16 Field House	2009	Provide slab and floor finish
\$ 20,000	23 B-3 Storage Relocate with Maint. Facility and Demo (E)	2009	
\$ 150,000	28 Greenhouse - Relocate & Demo (E)	2009	\$45/sq. ft. - 3,500 sq. ft.
\$ 400,000	New Entry Road & Rec Ctr./Sports Parking	2009	120 spaces
	Underground Electrical	2009	Locate along new entry road
\$ 15,000,000	Health & Science Technology Building	2009-2012	
\$ 90,000	Walkway Improvement	2009	Replacement or repair - \$30/sq. ft.
\$ 100,000	4 Empire Hall - Noise Abatement	2009	Acoustic insulation for black box theater
\$ 250,000	North Exit Road/Parking Lot 3	2010	\$300/lf.
\$ 350,000	Add Sports Field Bleachers (Shift Roadway)	2010	600 seat at \$175/seat - 725 ft roadway at \$300/ft.
\$ 1,283,600	3 Randolph	2010-2011	HVAC/Structural Repairs - \$100/sq. ft. - Remodel to include Media Services and Interactive Video relocation
\$ 200,000	5 Tioga	2012	Remodel first floor to expand mail and print area - 2,160 sq. ft.
\$ 2,600,000	24 Umpqua-Student Center	2013-2014	Addition and relocation of student services - Remodel 11,000 sq. ft. at \$100/sq. ft. plus addition of 7,500 sq. ft. at \$200/sq. ft.
\$ 1,380,000	7 Coaledo	2013-2014	Remodel into Library, 9,800 sq. ft. at \$100/sq. ft. - add 2,000 sq. ft. at \$200
	10 B-2 Storage	2009	
\$ 1,760,000	30 Family Center	2013-2014	Expansion and Remodel/Covered Play 9,300 sq. ft. at \$150/sq. ft. 4,600 sq. ft. at \$80/sq. ft. Classrooms and Conference Rooms 17,500 sq. ft. at \$100
\$ 1,750,000	29 Newmark Center		
\$ 850,000	51 Neighborhood Facility	2013-2014	Family housing
\$ 185,000	Neighborhood Facility Bridge	2013-2014	150' span by 6' at \$180/sq. ft. plus 300 ft. path
\$ 728,000	8 Eden Hall	2014-2015	Repairs/Glazing/HVAC
\$ 892,000	12 Sunset Hall	2014-2015	Repairs/Glazing and Addition of approximately 3,000 sq. ft.
\$ 850,000	13 Sumner Hall	2014-2015	Remodel into Technology
\$ 500,000	14 Fairview	2014-2015	Remodel and exterior repairs
\$ 562,000	2 Dellwood	2016	Remodel
\$ 820,000	5 Tioga	2015-2016	Remodel second floors to offices 7,310 sq. ft.
\$ 657,800	5 Tioga	2016	Remodel third floor - 6,141 sq. ft.
	Coos Bay Campus Future Classrooms	2016	Evaluate need for additional classrooms
	Curry Campus Additional Programming	2016	Evaluate Expansion Needs
\$ 345,000	1 Stensland	2017	Expand Bookstore/Security Office - 3,450 sq. ft. at \$100
\$ 2,000,000	5 Tioga	2017-2018	Remodel fourth (6,141 sq. ft.) and fifth floors (11,130 sq. ft.)
\$ 2,400,000	21 Prosper Hall/Recreation Center Connection	2018-2019	Infill between existing facilities and create Storage Facility- 12,000 sq. ft. at \$200/sq. ft.
\$ 115,000	17 Fire Science	2018	Remove existing construction and provide additional parking
	19 Fire Tower		
	Future Student Housing	2020	Evaluate need

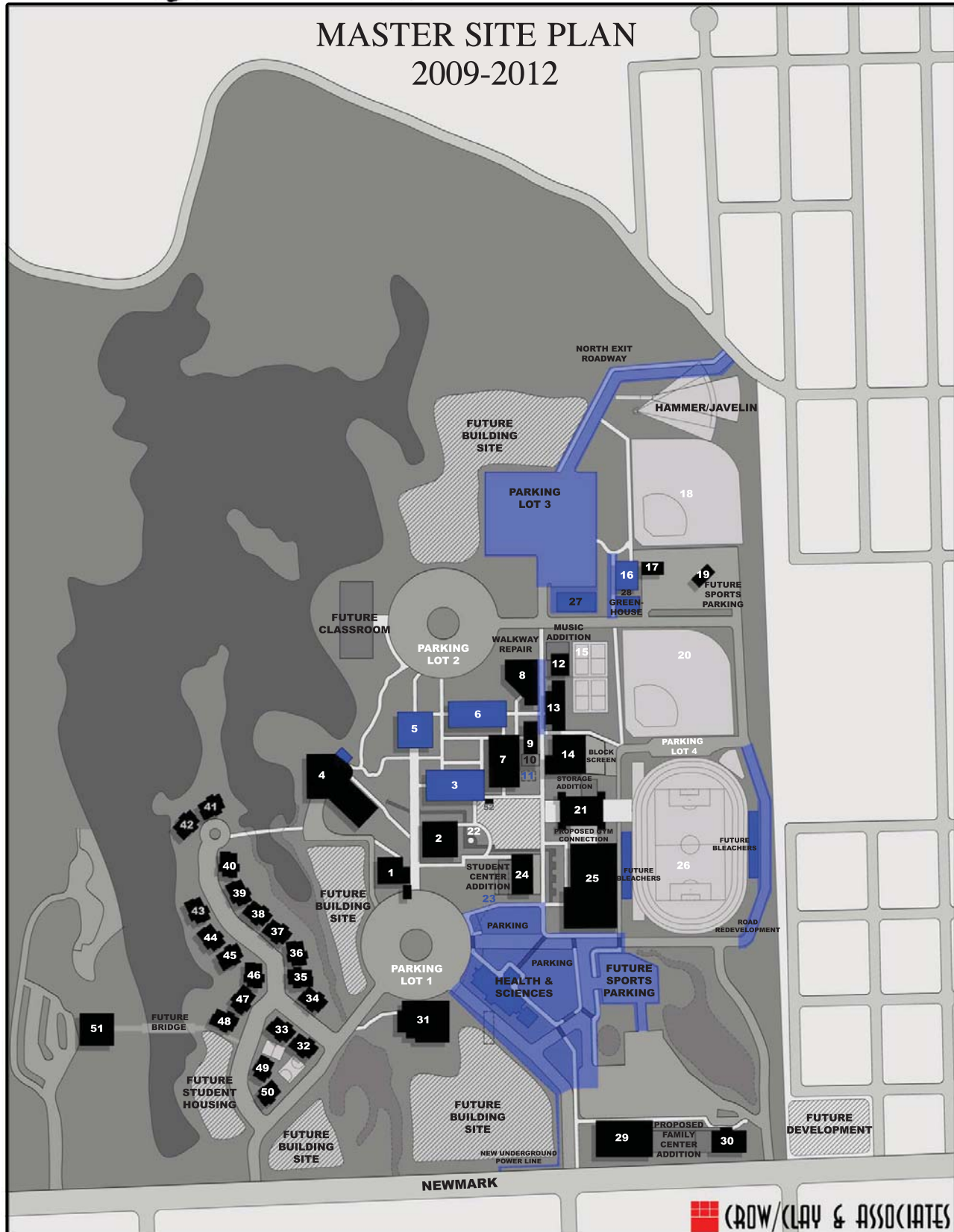
May 14, 2008



SOUTHWESTERN

Oregon Community College

MASTER SITE PLAN 2009-2012



DIRECTORY

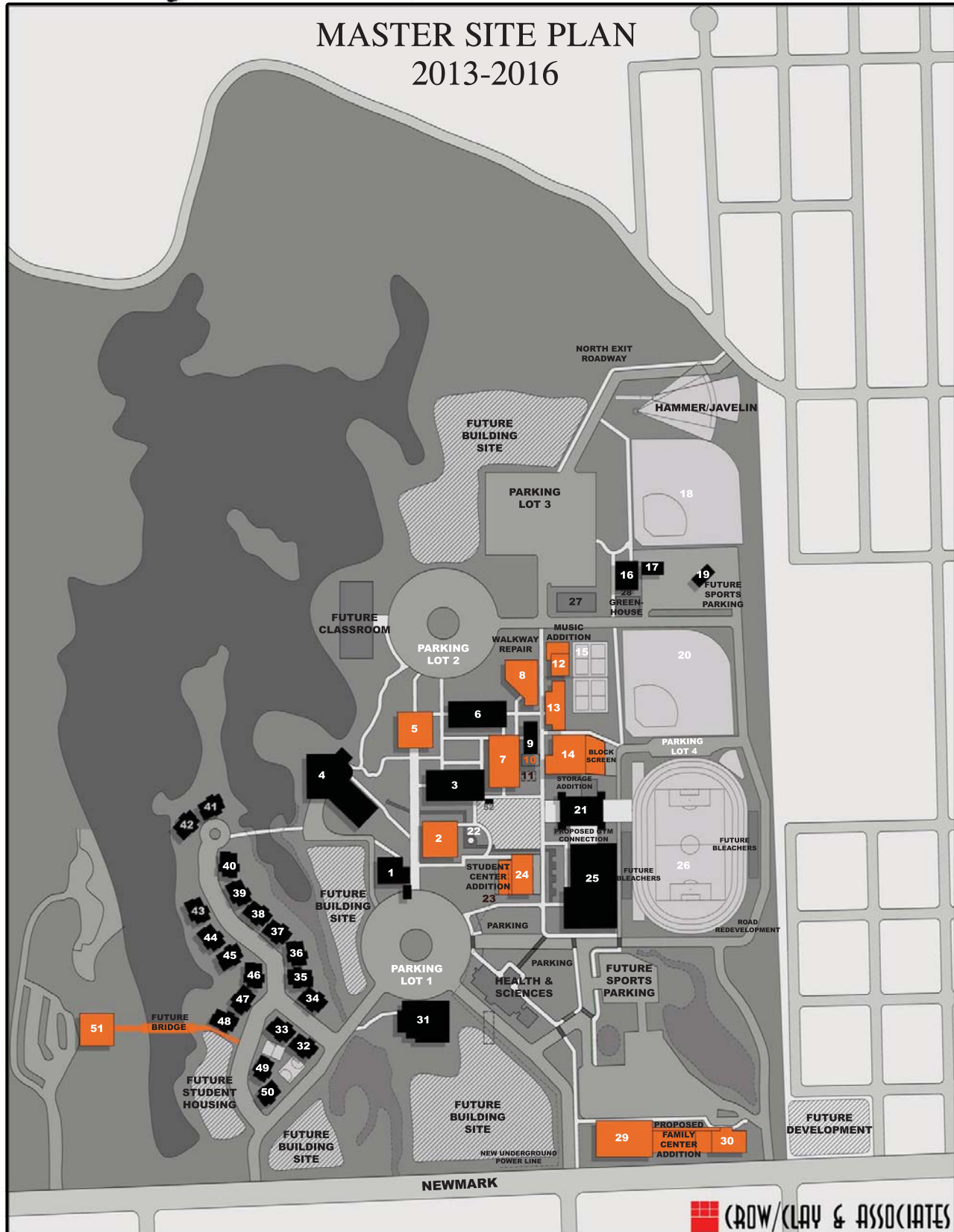
- | | | | | |
|---|------------------------------------|---|-------------------------|---------------------|
| 1. Stensland Hall | 11. Greenhouse(Future Removal) | 22. Poet's Eye Outdoor Theater | STUDENT HOUSING: | |
| 2. Dellwood Hall | 12. Sunset Hall | 23. B-3 Maintenance Warehouse(Future Removal) | 32. North Head | 42. Umpqua River |
| 3. Randolph Hall | 13. Summer Hall(Future Classrooms) | 24. Umpqua Hall (Proposed Student Center) | 33. Lighthouse Depot | 43. Cape Arago |
| 4. Empire Hall/Hales Center for the Performing Arts | 14. Fairview Hall | 25. Student Recreation Center | 34. Willamette River | 44. Coquille River |
| 5. Tioga Hall | 15. Tennis Courts | 26. Track/Soccer Field | 35. Warrior Rock | 45. Cape Blanco |
| 6. Sitkum Hall | 16. Field House | 27. Plant Services/Maintenance (Relocated) | 36. Desdemona Sands | 46. St. George Reef |
| 7. Coaledo Hall(Future Library) | 17. Fire Science(Future Removal) | 28. Greenhouse | 37. Point Adams | 47. Battery Point |
| 8. Eden Hall | 18. Baseball Field | 29. Newmark Center | 38. Tillamook Rock | 48. Trinidad Head |
| 9. Lampa Hall | 19. Fire Tower(Future Removal) | 30. Family Center/Child Care | 39. Cape Meares | 49. Willapa Bay |
| 10. B-2 Judo/Karate(Future Removal) | 20. Softball Field | 31. Oregon Coast Culinary Institute | 40. Yaquina Head | 50. Gray's Harbor |
| | 21. Prosper Hall/Gym | 51. Neighborhood Facility Building | 41. Heceta Head | |
| | | 52. Electrical Vault | | |



SOUTHWESTERN

Oregon Community College

MASTER SITE PLAN 2013-2016



DIRECTORY

- | | | | | |
|---|------------------------------------|---|----------------------|---------------------|
| 1. Stensland Hall | 11. Greenhouse(Future Removal) | 22. Poet's Eye Outdoor Theater | STUDENT HOUSING: | |
| 2. Dellwood Hall | 12. Sunset Hall | 23. B-3 Maintenance Warehouse(Future Removal) | 32. North Head | 42. Umpqua River |
| 3. Randolph Hall | 13. Summer Hall(Future Classrooms) | 24. Umpqua Hall (Proposed Student Center) | 33. Lighthouse Depot | 43. Cape Arago |
| 4. Empire Hall/Hales Center for the Performing Arts | 14. Fairview Hall | 25. Student Recreation Center | 34. Willamette River | 44. Coquille River |
| 5. Tioga Hall | 15. Tennis Courts | 26. Track/Soccer Field | 35. Warrior Rock | 45. Cape Blanco |
| 6. Sitkum Hall | 16. Field House | 27. Plant Services/Maintenance (Relocated) | 36. Desdemona Sands | 46. St. George Reef |
| 7. Coaledo Hall(Future Library) | 17. Fire Science(Future Removal) | 28. Greenhouse | 37. Point Adams | 47. Battery Point |
| 8. Eden Hall | 18. Baseball Field | 29. Newmark Center | 38. Tillamook Rock | 48. Trinidad Head |
| 9. Lampa Hall | 19. Fire Tower(Future Removal) | 30. Family Center/Child Care | 39. Cape Meares | 49. Willapa Bay |
| 10. B-2 Judo/Karate(Future Removal) | 20. Softball Field | 31. Oregon Coast Culinary Institute | 40. Yaquina Head | 50. Gray's Harbor |
| | 21. Prosper Hall/Gym | 51. Neighborhood Facility Building | 41. Heceta Head | |
| | | 52. Electrical Vault | | |



**MASTER SITE PLAN
2017-2020**

The plan shows a campus layout with various buildings and parking areas. Key features include:

- Future Building Sites:** Multiple areas designated for future construction, including a large site on the left and several smaller sites throughout the campus.
- Parking Lots:** Lot 1, Lot 2, Lot 3, and Lot 4 are clearly marked.
- Future Student Housing:** A large green area on the left side of the plan.
- Future Sports Parking:** A green area on the right side of the plan.
- Future Bleachers:** Located near the sports parking area.
- Future Classroom:** A building site in the center of the campus.
- Future Bridge:** A bridge crossing a water feature on the left.
- Future Student Housing:** A large green area on the left side of the plan.
- Future Building Site:** A large area at the bottom of the plan.
- Future Development:** A hatched area on the far right.
- Proposed Family Center Addition:** A building addition at the bottom right.
- Proposed Gym Connection:** A connection between two buildings.
- Storage Addition:** A building addition in the center.
- Block Screen:** A building addition in the center.
- Music Addition:** A building addition in the center.
- Walkway Repair:** A repair project in the center.
- Student Center Addition:** A building addition in the center.
- Health & Sciences:** A building in the center.
- Future Sports Parking:** A green area on the right side of the plan.
- Future Bleachers:** Located near the sports parking area.
- Future Classroom:** A building site in the center of the campus.
- Future Bridge:** A bridge crossing a water feature on the left.
- Future Student Housing:** A large green area on the left side of the plan.
- Future Building Site:** A large area at the bottom of the plan.
- Future Development:** A hatched area on the far right.
- Proposed Family Center Addition:** A building addition at the bottom right.
- Proposed Gym Connection:** A connection between two buildings.
- Storage Addition:** A building addition in the center.
- Block Screen:** A building addition in the center.
- Music Addition:** A building addition in the center.
- Walkway Repair:** A repair project in the center.
- Student Center Addition:** A building addition in the center.
- Health & Sciences:** A building in the center.

NEWMARK

CROW/CLAY & ASSOCIATES

1. Stensland Hall	11. Greenhouse(Future Removal)	22. Poet's Eye Outdoor Theater	STUDENT HOUSING:
2. Dellwood Hall	12. Sunset Hall	23. B-3 Maintenance Warehouse(Future Removal)	32. North Head
3. Randolph Hall	13. Summer Hall(Future Classroom)	24. Umpqua Hall (Proposed Student Center)	33. Lighthouse Depot
4. Empire Hall/Males	14. Fairview Hall	25. Student Recreation Center	34. Willamette River
Center for the Performing Arts	15. Tennis Courts	26. Track/Soccer Field	35. Warrior Rock
5. Tioga Hall	16. Field House	27. Plant Services/Maintenance (Relocated)	36. Desdemona Sands
6. Sitkum Hall	17. Fire Science(Future Removal)	28. Greenhouse	37. Point Adams
7. Coaledo Hall(Future Library)	18. Baseball Field	29. Newmark Center	38. Tillamook Rock
8. Eden Hall	19. Fire Tower(Future Removal)	30. Family Center/Child Care	39. Cape Meares
9. Lampa Hall	20. Softball Field	31. Oregon Coast Culinary Institute	40. Yaquina Head
10. B-2 Judo/Karate(Future Removal)	21. Prosper Hall/Gym	51. Neighborhood Facility Building	41. Heceta Head
		52. Electrical Vault	
			42. Umpqua River
			43. Cape Arago
			44. Coquille River
			45. Cape Blanco
			46. St. George Reef
			47. Battery Point
			48. Trinidad Head
			49. Willapa Bay
			50. Gray's Harbor

Classroom “Needs” Analysis

The administration requested a “classroom needs analysis” be a part of this facilities master plan.

Based upon a three percent to four percent increase in yearly enrollment and the Full Time Equivalent (F. T. E.) student enrollment in fall term of 2006, the addition of 17 classrooms projected for the Health Sciences and Technology facility will accommodate campus classroom needs for the next eight to ten years.

Special classrooms needed for specific discipline requirements should be evaluated to meet curriculum and program adjustments.

The calculation for the classroom “need” projection follows. (The 2006 Fall Term was used as the base for F. T. E.’s as it is the largest to date and fall terms for 2007 and 2008 were slightly less.)

Full Time Equivalent enrollment during 2006 Fall Term on Campus equaled 735 F. T. E.’s. An increase of 3 to 4% per year = $735 \times 1.03 = 757.5$ F. T. E.
 $735 \times 1.04 = 764.4$ F. T. E.

F. T. E. increase = $757.5 - 735 = 22.5$ F. T. E. at 3%
 $764.4 - 735 = 29.4$ F. T. E. at 4%

In 56 classrooms in fall of 2006 there were 12,320 students. 12,320 students divided by 56 rooms equals a 220 student average weekly enrollment per classroom.

Convert 220 student average weekly enrollment into F. T. E.
 220×2.75 (3) credits times 11 seat hours divided by 510 (1 F. T. E.) equals 14.23 F. T. E.

Therefore:

at 3%: 22.5 divided by 14.23 equals 1.6 classrooms per year needed for yearly enrollment increase.

At 4%: 29.4 divided by 14.23 equals 2.1 classrooms per year needed for yearly enrollment increase.

The new Health Science and Technology Facility programming data includes 17 additional classrooms.

Therefore:

17 divided by 1.6 equals 10.6 years at 3% increase in enrollment per year.

17 divided by 2.1 equals 8.1 years at 4% increase in enrollment per year.

Classroom needs will be met by the new Health and Science Technology facility for next 8 to 10 years.

Southwestern Oregon Community College
Focus Group Executive Summary
Curry County

Meetings (called Focus Groups) were held in Brookings, Gold Beach and Port Orford to ascertain community member thoughts and perceptions on Southwestern Oregon Community College's services, what additional services might be provided in their respective communities, and their ideas for the new Curry Campus programs and facilities.

This Executive Summary of the Focus Group Meetings was prepared to allow the College Board to more quickly assimilate the information provided in the Focus Group Meetings. A more detailed summary and the original Focus Group Minutes are included within the Appendix for those readers that would like to review all the comments made in the meetings.

All of the comments and ideas noted in the Focus Group Meetings are categorized under the following subheadings:

- Community Trends
- Who We Need to Serve
- We Should Partner With and Provide Services in Conjunction With
- Curry County Is Unique, Our New Campus Should Incorporate and Embody this Uniqueness
- Our Campus Should Also Have
- Programs That Respond to Trends and Interests
- Can We Do This Also?
- Our Facility Desires
- Other Campus Programs or Possibilities
- Additional Comments
- Curry County Student Focus Group Dialogue Summary

These sub-headings were established either in the Focus Group Meetings or were created to describe similar thoughts or perceptions gleaned from the Focus Groups discussions.

The existing College facilities in Brookings should be evaluated for functional reuse after detailed program development for the new campus facility has been completed.

Each community we visited indicated that the presence of the College in their respective community as being vitally important. All requested that the current level of service be maintained and increased.

The following, in the plan preparers opinion, are the primary concepts discussed during the focus group meetings.

Community Trends:

Brookings

- Tourism and service related industries are increasing.
- The population base is aging and is increasingly made up of active affluent seniors.
- Medical and health service demands are increasing.
- Use of technology is increasing.

Gold Beach

- The population base is aging and is increasingly made up of active affluent seniors.
- Industry in the area is declining and there are fewer family wage jobs.
- Tourism is increasing.
- Use of technology is increasing.

Port Orford

- The population base is aging and is increasingly made up of active affluent seniors.
- Young adult population is decreasing.
- Growing home school population.
- Technology improvements needed.

Who We Need to Serve:

- Associate degree students and students preparing for a 4 year degree.
- Growing senior and retirement population.
- K-12 school students to facilitate transition to the community college.
- Individuals in the work force needing training and retraining.

We Should Partner With and Provide Services in Conjunction With:

- Local businesses.
- Local schools.
- Public entities i.e. cities, hospitals, police, fire, etc.
- Larger statewide institutions.
- Unions.

Curry County Is Unique, Our New Campus Should Incorporate and Embody this Uniqueness:

- Natural attributes of the County - flora, fauna, geology, and scenery.
- History of the area.

Our Campus Should:

- Be an example of sustainability.
- Establish a sense of identity.
- Provide complete accessibility.
- Feel and be safe.

Provide and/or Maintain Programs That Respond to Community Trends and Interests:

- Need “Flagship” Program - Something unique to Curry Campus.
- “Cluster” Programs.
- Property Management Programs.
- Hospitality and Service Industry Programs.
- Alternative Energy and Environmental Science Programs.
- Business Planning and Development Programs.
- Medical Technology, Medical Services and Health Care Programs.
- GED Programs.
- Technology Programs.
- Art and Music Programs.
- Construction Trade Programs.
- Industrial and Vocational Programs.
- Horticulture Programs.
- Culinary Programs.
- Kids Programs.

Can We Do this Also?

- Accommodate weekend/Short Course programs for tourist and corporate retreats, i.e. teaching conferences.
- Tuition exchanges.
- Draw from area “expertise” through workshops and mini courses.
- Create Small Business Development Center.
- Connect a transit system to campus.
- Incorporate Aspire - mentoring programs.
- Create environment which promotes student life.
- Sports camps.

Our Facility Desires:

- Full Year, Full Day Facility Usage.
- Physical Education Facilities.
- Performance Facility.
- Community Center Room/Conference Center.
- Covered walkways and exterior spaces.
- Well lit, signed and secure, lock down accommodations.
- Library/Resource Multimedia Center.

- Dormitory/Housing, Elder Hostel.
- Kitchen facility.
- Flexible spaces for both function and technology.

Other Campus Programs or Possibilities:

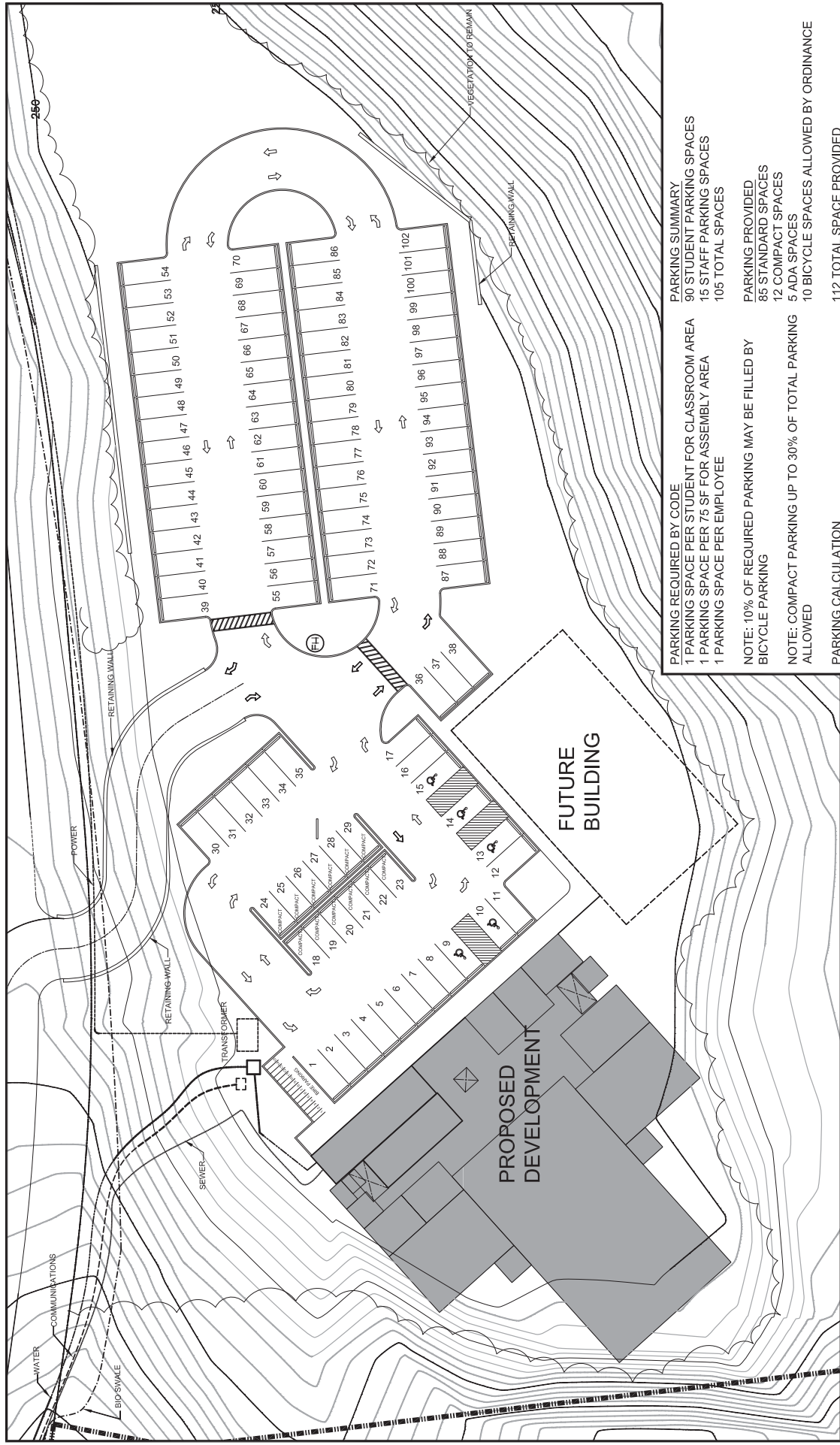
- Outdoors Clubs for students.
- Daycare and/or early childhood development co-op.
- Bike trail/walking trail to campus.
- Adolescent mental health accommodations.

Additional Comments:

- Child care needed for classes in each community.
- Increase SOCC presence in each community.
- Provide workshop and mini courses in each community using community expertise.
- Broadband internet connection needed throughout service area to promote distance learning and other communication.

Curry County Student Focus Group Dialogue Summary:

- Excellent Academic Staff Imperative.
- Programming.
 - Art programs.
 - Nursing.
 - Career related programming.
 - Lifelong learning programs.
 - Job training interface with employers.
 - Business and career resource center.
 - Science programs.
 - Service sector programming.
- Maintain pace with technology.
- Health and Fitness Facilities and Courses.
- Partnerships with School and local businesses.
- Provide transportation connections.
- Provide child care.



PARKING REQUIRED BY CODE
 1 PARKING SPACE PER STUDENT FOR CLASSROOM AREA
 1 PARKING SPACE PER 75 SF FOR ASSEMBLY AREA
 1 PARKING SPACE PER EMPLOYEE

PARKING PROVIDED
 85 STANDARD SPACES
 12 COMPACT SPACES
 5 ADA SPACES
 10 BICYCLE SPACES ALLOWED BY ORDINANCE

PARKING SUMMARY
 90 STUDENT PARKING SPACES
 15 STAFF PARKING SPACES
 105 TOTAL SPACES

PARKING CALCULATION
 6000 SF ASSEMBLY DIVIDED BY 75 SF = 80 SPACES
 6 CLASSROOMS (1 LAB, 5 STANDARD) WITH AVERAGE CLASS LOAD OF = 90 SPACES

NOTE: ASSEMBLY SPACE IS PART OF CORRIDOR SYSTEM, THEREFORE ASSEMBLY AREA CAN NOT BE USED TO CAPACITY WHILE CLASSES ARE IN SESSION

**SOC CURRY CAMPUS
 CAMPUS PLAN
 PRELIMINARY PLAN
 NOT TO SCALE**

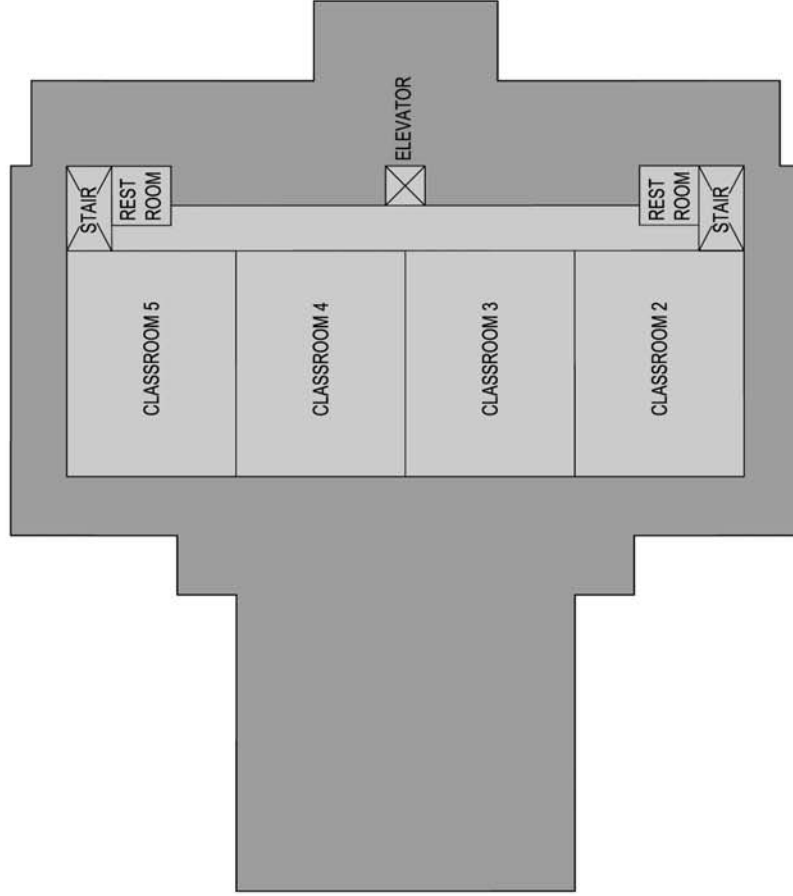
1541 WEST CENTRAL AVENUE
 SUITE 200
 COOS BAY, OREGON 97420
 TEL: (541) 265-5888
 FAX: (541) 265-5889
 WWW.CROWDAY.COM

CROW/CLAY & ASSOCIATES INC.
 ARCHITECTURE AND PLANNING
 LAND USE AND INTERIORS

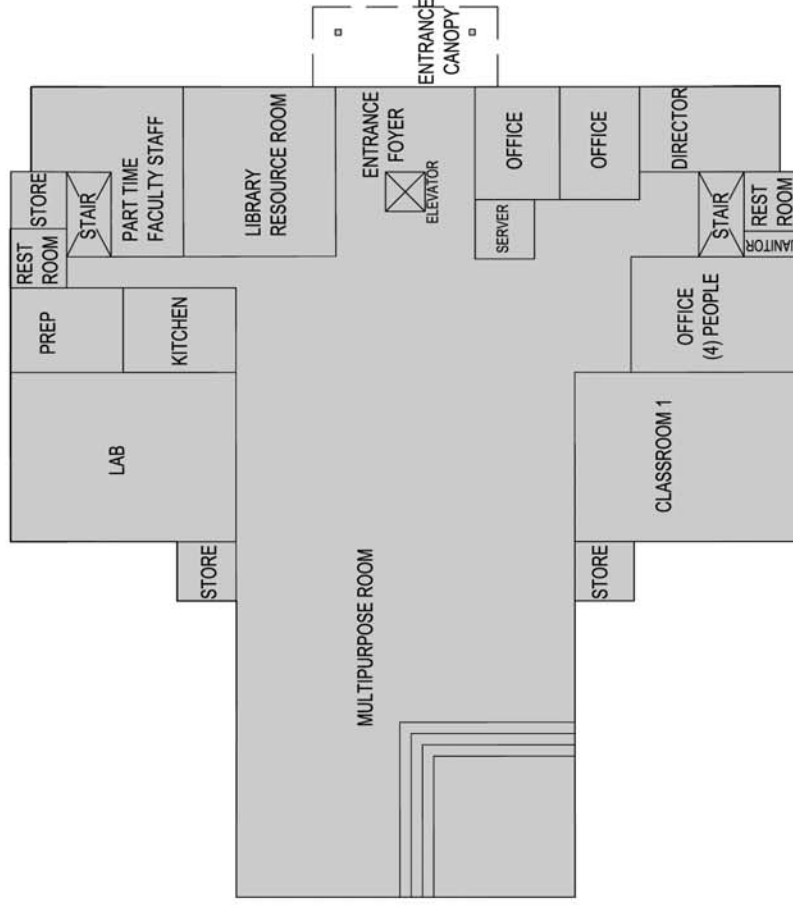


■ PORTLAND, OR ■ COOS BAY, OR

SOC CURRY CAMPUS
MAIN BUILDING
 PRELIMINARY PLAN
 NOT TO SCALE
 BROOKINGS, OREGON

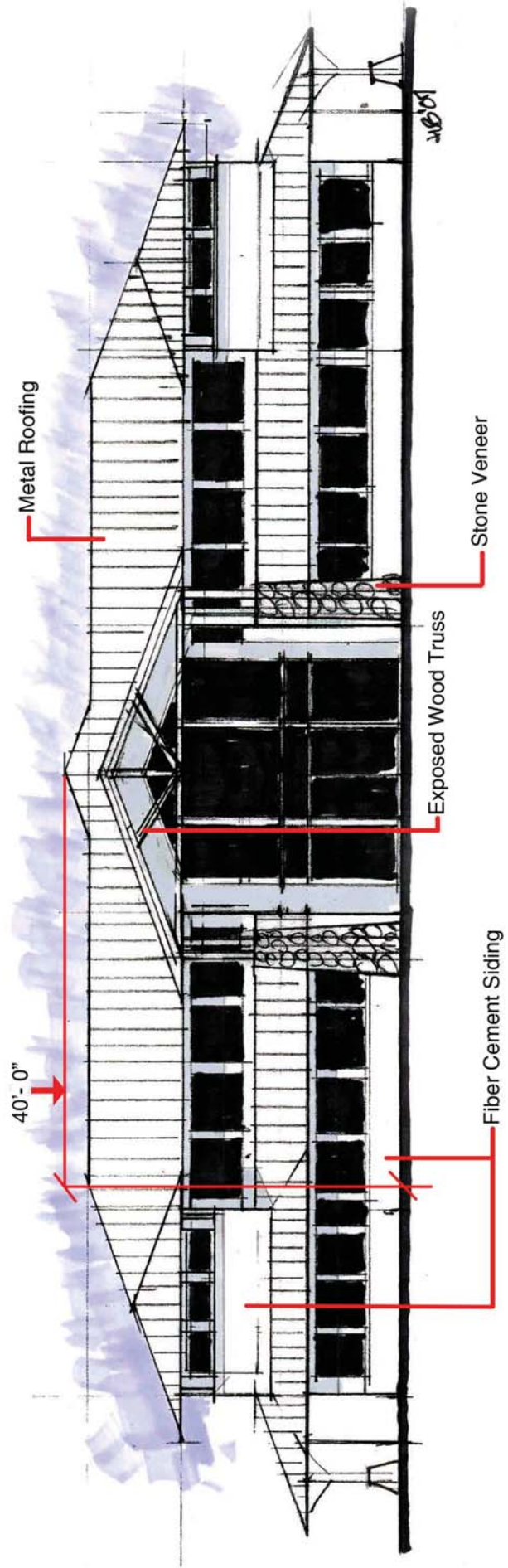


SECOND LEVEL



FIRST LEVEL

Southwestern Oregon Community College
Curry Campus
Preliminary Elevation



Entrance Elevation

Curry Campus
Preliminary Area Requirements

Multipurpose Room	60' x 100'	6000 sq. ft.
Kitchen	15' x 20'	300 sq. ft.
1 Lab	30' x 40'	1200 sq. ft.
5 Classrooms	30' x 40'	6000 sq. ft.
Note: 3 of 5 classrooms have movable partitions. 8 total classrooms		
Preparation Area for Lab	15' x 20'	300 sq. ft.
Storage	10' x 40'	400 sq. ft.
Work Room/Prep/Resource Area/Book Store	20' x 40'	800 sq. ft.
2 Offices (4 people)	15' x 20'	600 sq. ft.
1 Director Office	15' x 20'	300 sq. ft.
Part Time Faculty Offices	20' x 30'	600 sq. ft.
2 Restrooms	15' x 15'	450 sq. ft.
Server Room	6' x 10'	60 sq. ft.
Janitor at 50 sq. ft.		<u>50 sq. ft.</u>
Subtotal		17060 sq. ft.
Walls, Mech, and Circulation at 25%		<u>4265 sq. ft.</u>
Total		21325 sq. ft.
Other General Requirements:		
Outdoor space adjacent to the multipurpose room		
Amphitheater type seating at one end of the multipurpose room		
Weather protected entry vestibules		

Maintenance Building	400 sq. ft.
----------------------	-------------

Focus Group Meeting Dates

Coos/Douglas County

This detailed summary as well as the original focus group meeting minutes are color coded. This color coding allows the reader to refer to the original Focus Group Minutes to verify each summaries ideas location and initial wording.

1. Community Commission Focus Group, June 20, 2007
2. Coos and Curry Staff and Faculty, September 14, 2007
3. Staff and Faculty, September 18, 2007 (4 meetings)
4. Bandon, October 18, 2007
5. Powers, October 25, 2007
6. Myrtle Point, October 25, 2007
7. Reedsport/Lakeside, November 1, 2007
8. Students, November 6, 2007
9. Students, November 7, 2007
10. Coos Bay/North Bend, November 8, 2007
11. Coos Bay/North Bend, November 15, 2007
12. Faculty, November 16, 2007
13. Coquille, November 29, 2007

Detailed Focus Group Summary

(The number of times a concept was mentioned more than once are enumerated along the left margin)

1. Community Trends

- Momentum of incoming businesses
- People working over internet
- 4 • Tourism/Hospitality increasing
- 1 • Service industries increasing
- 5 • Medical services/Health care increasing
- Longer life spans - active
- Blue collar needs like truck driving
- Telemarketing is growth industry
- Aquaculture (fishing trends), fish farming, connect with OIMB
- 1 • Golf/Recreation, maintain relationship with Bandon Dunes
- Second career, retirement
- Community education
- Personal development (seniors)
- Green technology
- 3 • Large retirement population but older retirees and still active
- High quality artists and cottage industries
- Decline in numbers of children
- Trend for high end services, mud bath, spas
- New subdivisions
- Charter boat businesses expanding
- Airport to play a major role
- 2 • On-line classes are proliferating and we need to continue
- Property being sold for condominiums
- Local investors making property available
- Development of Wave Energy optimistic sign for the growth of the community
- Bolin Island: Wood pellet mill slated for 2008
- 1 • Global warming
- Container facility
- 3 • Aging population

2. Who We Need to Serve:

- Accommodate students
- Returning students/family wage jobs
- Retired workforce/additional job training
- Students needing job skills for "Middle Income"
- 2 • Boomer needs
- 1 • Online classes - more offerings
- 1 • Respond to community job needs
- Raise presence/value to the community
- Adult ed classes bring the community in
- 3 • Life long learning
- 2 • Get kids hooked on education
- Work with the K-12 schools

3. We Should Partner with and Provide Services in Conjunction With:

- Partnership buildings and programs
- Leadership Institute
- 6 • Shared programs and facilities with high school
- “Community Partners”
- 1 • Business/training
- Connection to Port and Airport
- 2 • Fire Science interns help out at local fire departments
- Sharing city pools could be enhanced with more times and reduced student fees
- Culinary students could benefit with internship programs
- 1 • Nursing internships should be at local and regional hospitals
- 3 • Internship expansions or opportunities could be enhanced
- Partnership of hospitality and SOCC is key
- OIMB could be a partner
- Media and broadcasting - coordinate with high school program
- Use Baby Boomers to teach others
- Unions need to be included and would be partners - On the Job Training
- Native Americans need to be reached - partner with them, especially the young kids
- Partnerships with SOCC and the Discovery Center
- Be unique to our region and partner with larger institutions
- Dean Creek, Umpqua Lighthouse, B & B, Culinary could be an asset with course work for fun or credit to capture non-residents dollars
- Eldercare internships

4. Our Campus Should:

- 1 • Maintain natural landscape
- 3 • “Green” college by example
- Maintain environmental quality of campus, enhance awareness
- Accessible campus/buildings/paths
- LEEDS building materials/systems
- Climate sensitive building designs
- Provide immediate needs to promote future program expansions
- 1 • Branding in community
- “Identity” image of higher learning/signage
- Interpretive areas
- Integration of Newmark Center
- Turf and landscape as part of campus
- Exterior lighting, emergency kiosk or phone
- Nowhere to relax outside - fountain, or other gathering place is needed - artwork focus
- Student art could be incorporated in the campus
- Designated covered smoking areas would help
- New paving between softball and soccer field is good
- Back parking lot entrances would improve access and circulation
- “Walkway of Success” - sidewalk/names in brick

*5. Programs That Respond to Trends and Interests
(needed in each community as well as new campus):*

- Theater, jamming sessions, workshops that are short
- 1 • Trade related career programs
- 3 • Technology classes/computer
- 4 • Hospitality programs including management
- Beauty school
- 6 • Nursing program expansion/some on-line classes
- Mortuary science
- Education opportunities for start over "gray hairs"
- Expand health related programs
- 4 • Expand Fire Science programs
- Simulation education and technology
- Respond to "Casino", "Bandon Dunes" with appropriate programs
- 2 • Rec Center/Rehabilitation program - Physical Therapy
- Long range learning - translation
- 1 • Long term care programs
- 1 • Eco-tourism
- Medical field
- 5 • Computer/Industrial/Vocational
- 1 • Welding
- 3 • Automotive
- Truck driving
- 5 • Construction trades - carpentry, tile, electrical, plumbing, HVAC, drywall, etc.
- Construction trade certification
- 1 • Business programs and Management
- 5 • Horticulture program
- Turf and landscape
- Golf tie
- Furniture program
- "Hobby Shop" - engineer life long learning
- Geriatric study - provider training
- Boomer needs
- Clubs
- Second career choices
- Tennis program
- 1 • Massage therapy training
- Retirement classes
- Financial planning
- 1 • Paramedic program
- Wild land fire training program
- Wood Shop
- 1 • ARFF - Airport Rescue Fire Fighting Program
- On-line classes help when Fire Science students pull shifts

- 2
 - International programs, need varied languages, bring in outside cultures
 - Water polo program
 - Manager training, City Police, Fire, Criminal Justice
 - Expand University Center
 - Pharmaceuticals, etc.
 - Transportation programs
 - EMT
 - Phlebotomy
 - Radiology
 - Nuclear Medicine
 - Dental hygiene
 - Sports medicine
 - Conference of Annual Training for EMT's
- 5
 - Forestry Programs/Stainable forest/remanufactured products
 - Silviculture
 - Horticulture
 - Geriatric specialties
 - Physicians assistants
 - Ophthalmic assistants certification programs
 - Leadership
 - Personnel management
 - Electronics
 - Alternative energy science and environmental sciences
 - Wave energy programs
 - Elected officials need training - special districts, boards, etc.
 - Criminal justice
 - Veterinary Assistance
 - Human Resource training
 - Safety programs - OSHA
 - Emergency response training (Wal-mart now training in shop)
 - Internet management certificate programs could feed into BA and BS programs
 - Methane energy environmental testing skills needed
 - Trouble shooting skills are project management skills
 - Food handling - cranberries and other agriculture meat processing
 - Inspector training - agriculture and real estate
 - Fish and Wildlife can be addressed under environmental topics
 - Graphic art degree
 - Web design
 - E-marketing
 - Marine
 - RV
 - Community Leadership Center. Studies of the northwest environment
 - Classes for volunteerism, community services, languages, global programs
 - Help others with sustainability
 - Experimental learning (designing websites)

- Provide a life skills program that establishes early planning that goes on through the years
- Apprenticeship programs - plumbers, electricians, carpenters
- Nutrition is basic - what do we do with food?
- Technologically oriented businesses need trained and skilled employees
- Provide more high school classes on-line
- College credits for high schoolers help
- Transfer class equals good start for University
- Computer technology classes
- Adult basic education
- ROTA - Reserve Officer Training Academy
- 2 year program which transfer to the Universities
- Foreign language would be a good addition in Myrtle Point - could be Spanish.
- GED program, on-line also
- Health Care professions
- On-line classes could be stepped up
- Technology training is needed, Cell Phones, Internet. We have to be proactive about technology
- College programs for high school students
- Nursing program is a plus - a growing need
- Bolster 2+2
- Culinary careers can be expanded
- Nursing and Pro Start Culinary contest is a nationwide program. Do it!
- Survival - mushrooming and other regional offerings would be good outreach - also art
- Seminars or short classes
- On-line courses should expand
- Math and sciences are a good focus
- Healthcare
- Financial planning
- Geriatrics
- Viniculture (grapes). We have water and the climate for it
- Natural resources management
- Habitat Restoration
- Fisheries enhancement
- Water quality needs
- Law enforcement program should expand
- Appraiser training
- Numerous specialties need continuing education

6. *Can We Do this Also?*

1

- Access to technology - multimedia access for students
- Accommodate cultural differences
- Campus Master Plan/including entry and circulation
- Career center
- Outdoor bandstand
- Senior daycare training center
- "Ropes" course around lakes/corporate training
- More sidewalks
- Parking study
- Trail improvement/Lake path accessibility
- Youth hostel
- Interpretive uses of natural resources
- Student advisory committee
- Recycling, energy efficiency, solar energy, etc.
- Remove bulletin board outside of Randolph - it is ugly and no real cover (not used)
- Main entrance bus stop (plexiglass) is not adequate
- New furniture, desk chairs in Sitkum are a challenge
- Coffee cart area with quality coffee should be on site - maybe bookstore
- Path in grassy knoll is needed east of Empire Hall entrance
- Delivery mode needs to include on-line classes
- Apartment housing could house people for short courses in the summer
- Have summer short courses that enhance programs
- Circular road around the campus
- Improve campus directional signage
- Highly trained advisors
- Use local expertise and specialties to build unique programs

7. Our Facility Desires:

- 3 • Flexible space sizes and needs
- 1 • Facilitate current and future technology
- Community friendly facilities
- Full year, full day - facility usage
- Secure storage - long term
- Formal meeting space
- Wind shelter useable exterior space - meeting and classroom sized
- Lock down accommodations
- Green technology and buildings
- 1 • Accessibility
- Accommodate daycare and parent/child housing and related academic programs
- Job skill area - flexible use
- 1 • Second floor on single story to accommodate growth
- 1 • Faculty/staff space/informal break areas, employee gatherings
- Container facility - flexible training space
- Program related spaces, specific programs
- Create communities in each building, staff/admin support
- 2 • Create student commons on campus/coffee central
- 1 • Spaces throughout campus to foster interaction
- Adequate storage space
- Faculty office space
- Graduation needs 1500 to 2000 (currently 700 stagger ceremony)
- No doors on bathrooms
- 1 • Safety, security - lighting
- Emergency phones
- Family center expansion - classroom
- Extreme flexibility
 - Furniture
 - Partitioning or seminar vs. lab
 - Technology
 - Lighting
 - Different classroom environment
 - Research possibilities "furniture"
 - Study student/teacher interface
- Conference Center
- Fountain Dellwood - fix and/or move
- 1 • Swimming Pool - indoor
- Adaptive reuse - facility expansion
- Inventory of spaces - facility expansion
- Space utilization - facility expansion
- Cost/benefit ratio and appropriateness to space - facility expansion
- Meet handicapped parking/ADA needs not minimums
- Develop pathway for visitors

- Comprehensive maintenance plan - preventative
- Life cycle costing
- Asset management plan
- Replacement plan/sinking fund
- Sound
- Lighting
- Furniture
- Bathrooms
- Signage - need better in and out of buildings
- Fire Science facilities - new offices, classrooms, tower, burn building, up-to-date fire science needed equipment helps students get experience and jobs
- Covered walkways
- Track and field needs night lighting
- New Rec Center needs bleachers
- Seats and parking are essential for events at new soccer/track field
- Javelin and hammer throwing facilities are needed
- Fix heaters in halls
- Enlarge testing center
- Criminal Justice/Corrections needs some of its own space
- Kitchen needs to be more efficient - outdated
- Paint classrooms with variety
- Softball, baseball, tennis court area - pave metal shop area
- Upgrade Prosper and gym
- Public safety needs better office
- Waiting room at First Stop is a mess - there are unneeded walls and people who work there are not visible
- Improve HVAC at Sitkum
- Improve Library layout
- Smart boards in classrooms are great - add in Coledo, Stensland and 2 or more in nursing classrooms
- Worker housing complex could be built and then become married student housing
- Signage for University Center needs to be improved
- Aesthetics to be attractive and encourage people to stay
- Use colors to make spaces/buildings more attractive
- Improve acoustics (cafeteria noisy)
- Areas/places for students to interact with instructors
- Meeting lounge
- Lighting levels to encourage learning
- Temperature control to encourage learning
- Learning modes. Diverse environments for learning in same building and rooms
- Centralized control of light and heat
- All rooms to have up to date technology. Fiber ring not fiber star
- Umpqua Hall - currently geographic center - potentially student center

- Housing on campus is a good experience, so young people can live away from home but still be close to family

8. Other Campus Programs or Possibilities:

- 1 • Student health center
- 1 • Bikeways
 - Walking safe, pleasant paths
 - Pathways around campus as well as buildings
 - Storage for bikes/lockers
- College connections to regional events
- 1 • Expand 4 year degree offerings and beyond/link to 4 year school
- 1 • Outdoor covered space/classrooms
- Identify Quad, student areas, smokers area separate not second class
- Garden tours
- Yurts concepts
- Develop lake potential
- 1 • Second campus entrance
- 1 • Public transportation - adequate and timing/shuttle service
- Single parent housing
- 1 • Childcare
- Married student housing needs
- RV parking and pet area - long term student parking, bathroom
- Credit cards for food service
- A "hall of fame" or trophy area would exude pride
- Coffee shop needs to be implemented ASAP
- Training films could be produced by students
- College could host meetings and facilities food events

9. *Additional Comments:*

- Community ed training
- Child care program
- 1 • Promote campus locations throughout community
- Regional/community transportation system
- 1 • Foundation and scholarship
- Grant awareness
- Single parent family support - continue and improve support
- Monitor changing demographics in our college region
- Student retention - trends and strategies
- 1 • Increase library hours of operation make user friendly
 - Evening/weekends/hours for student needs
 - Update to 21st century
 - Dedicated - study areas
 - Future vision of the College
- Reduce barriers
- Senior housing
- Infirmary - urgent care
- Married student housing
- Stronger connection to OIMB
- Local cultural awareness
 - Tribes
 - Community history
- Home room concept
- Have SOCC Board hear from local fire chiefs regarding sleeper cadets
- Students in Fire Science come from various states and local region
- The Fire Science/EMP has put together a PowerPoint presentation to show the Board: Contact Rick Cooper at 888-2006
- Game room should be by housing
- 1 • Go for University status
- College is evolving, educates the entire community and plays an educational leadership role
- College must be commuter friendly
- Create a college brand for 50th anniversary
- Need to be 10 years ahead in creating courses
- Reduce carbon footprint
- Education has changed. Students need to be able to perform critical thinking
- Hispanic and other immigrants need to learn the system and need training
- Continue to expose young people through skills day and other events that bring people to the campus
- Don't build stuff. Use existing facilities
- 2+2 and online classes here are important
- 1 • High speed internet for the general public and students
- Students could mentor adults in technology if trained

- Education needs to determine how to change our systems to utilize the social aspects of technology
- Dorns a plus
- Enhance connections between K-12 and SOCC
- SOCC needs to continue as an education leader
- Area families have SOCC attendance "traditions" - education is cost effective
- Transfer to universities courses is helpful
- Non academic classes provide social and as well as educational aspect
- Offer classes that attract new people to the region - be the best at something

10. Student Services

- Job search and placement
 - Intern
 - Post internship
- Transfer help
- Accommodate Special needs
- Facilitate student to staff connection
- Student communications/interface with community
- Improve Criminal Justice/Corrections internship opportunities
- Intermural sports would be nice
- Exit strategy, transition from degree - job (career center)
- Make students aware of what SOCC has available
- How to apply for a job and how to interview
- Dress for success programs

11. Staffing Goals

- Administration to maintain strong leadership
- Making strong academic staff continue to recruit and maintain “top people”
- Making strong support staff
- Projection of staffing needs
- Paramedic staff is needed and a facility
- Full time instructors for fire science
- We need Spanish speaking instructors, bi-lingual

12. Program Content

- 1 • Job ethics should permeate all course work
 - Job retention
 - Job preparation
 - Attitudes
 - Self assessment
- Citizenship and community responsibility
- Customer service
- Job ethics
- 1 • Interface with the businesses to see what they need
- How to interact with people
- Classes on-line should have a syllabus with notes and bibliography

13. Community Connections Coos Bay/North Bend

1

- Maintain awareness of community “Keys to Success”
- Increased adult activities - Adult enrichment class
- Clubs/organizations
- Increase youth activities (all ages) i.e. camps (sports), art/music/culinary etc.
- Open door policy - broad based community access
- Theaters need to interface more. Bandon has greater theater. Have outside high profile come and book several places: Brookings, Bandon, Florence, SOCC

Bandon

- Bandon would like a small facility - “A presence”, to get GED. This could happen in the Barn, which is being remodeled. (Being organized with breakout rooms to be used as convention center)

Myrtle Point

- Outreach in community site is needed, they have a room at the District Office that can be used.
- Expanded Options Program in combination with SOCC is good for the high school students. This is a new program.
- SOCC is an important link with K-12 districts
- Forestry program at SOCC could build a Myrtle Point program and offer additional programs.

Coquille

- Outreach is important - local classes
- Visibility of the college and OCCl should be in outlying areas
- Ties with high school students - 2+2 and other interconnections create opportunities and give students a view of what is possible

Reedsport/Lakeside

- Communities without a community college on site suffer - outreach needs to be organized and available
- SOCC Culinary could integrate and do more hospitality in the community
- Culinary students need hands on within the community - this was done around Senora at a historic hotel
- Fire Science Program Internship

Powers

- Powers at the "end of the road". SOCC is an asset to us - good progress
- Students need training for local jobs

14. Linking Courses

- Pre-nursing/Anthropology
- Political Science/Nursing
- College prep - teach differently
- Engineering/Art - Architecture
- Math/Music
- Music Thanatology Therapy
- Reading/Math
- Content/Developmental Education
- Art/Anthropology
- Business/International issues
- Music/Geography, Sociology
- Food/Sociology
- Fusion Programming brings Faculty closer, honors adult learning
- Communication/Technology
- Literature/Health Care/Technology
- Forensic/Science

**Community Commission Focus Group
June 20, 2007**

Curry County:

- Less opportunity for large industry
- **Need for adult education will grow**
- Large residential development (Rio Tinto Zinc 800 units of mixed town houses and single houses).
- **Median house price \$325,000**
- **Large retirement population but have wealth, and are younger and more active than typical retirees.**

Bandon:

- **As above regarding retirees, but older retirees and still active.**
- A lot of **high quality artists and cottage industries**
- **Decline in numbers of children**
- Looking for **theater, jamming sessions, workshops that are short**
- **Trend for high end services, mud bath, spas**
- Successful City but population changing same as in other areas
- **Subdivisions** going in
- Fishing intermittent but **charter boat business expanding**
- **Airport to play a major role**
- Oregon Overseas
- Bandon Dunes spawned **transport companies, laundry companies**
- School system struggling
- Bandon Dunes largest employer. Hospital second.

Reedsport:

- I.P. gone. **Property being sold for condominiums**
- Condominiums on Schofield
- Until recently no lots available. **Local investors making property available.**
- **Development of Wave Energy optimistic sign for the growth of the community**
- American Bridge - Has not met expectations in terms of increasing employment and stimulating economic growth.
- **Bolin Island: Wood pellet mill slated for 2008**
- Student numbers are dwindling

Gold Beach:

- Measure 37 claims potentially releasing land for development
- Condominiums becoming a popular development
- **Employment levels reduced by decrease in County budget**
- Freeman Marine doing well
- **Forest Service minimal employment**
- **There is a Cottage industry built around technology**
- Seafood Broker
- **Housing expensive**
- **72% of Curry County is owned by the State which impacts potential income growth from property taxes.**
- **Gold Beach is strong on natural resources**
- Airport has been given a grant
- **Port of Gold Beach still in turmoil. River mouth not being dredged and is silting up.**

Ron Olson:

- Momentum of incoming businesses
- People working over internet
- Growth of mom and pop service industries

Brenda Rogers:

- Can young people afford to live here?
- Tourism
- Service industries
- Medical services

Response to Trends:

- Consolidating schools as programs and funding dwindling
- Encourage trade related careers. High school diplomas and trade
- SOCC to work with schools on technology so several schools have the same classes.

Recruit outside area

FTDE?

- Hospitality
- Carpenters
- Massage
- Beauty school
- Nursing
- Physical therapy
- Mortuary science
- Education opportunities for start over "gray hairs"

**Coos and Curry Staff and Faculty Focus Group
September 14, 2007**

- **Expand health related programs**
- **Flexible space needs**
- **Facilitate current and future technology**
- **Unofficial meeting spaces**
- **Community friendly facilities**
- **Partnership buildings and programs**
- **Accommodate student and business needs**
- **Community ed training**
- **Flexible size spaces - smaller and larger groups**
- **Full year, full day - facility usage**
- **Secure storage - long term**
- **Formal meeting space**
- **Wind shelter useable exterior space - meeting and classroom sized**
- **Access to technology - multimedia access for students**
- **Lock down accommodations**
- **Accommodate Fire Science**
- **Green technology and buildings**
- **Accessibility**
- **Accommodate daycare and parent/child housing and related academic programs**
- **Simulation education and technology**
- **Collective college identity but maintain individual identity**

- Maintain natural landscape
- Child care program

Community

- Hospitality/service
- Respond to "Casino", "Bandon Dunes"
- Student health center
- Rec Center/Rehabilitation program
- Job skill area - flexible use
- Family wage jobs - returning students
- Expand internship programs
- Leadership Institute
- Promote campus location throughout community
- Faculty/staff space/part time informal break areas, employee gatherings
- Long range learning - translation
- Longer life spans - active
- Accommodate cultural diff
- Additional job training
- Long term care

Long Range Thoughts

- Shared programs and facilities with high school
- Second floor/is single story for long range facilities
- Campus plan
- Campus circulation

- Campus front door
- Eco-tourism
- Container facility - Flexible training space
- Regional/community transportation system

Staff and Faculty Focus Group
September 18, 2007
9:00 am

Community Connections

- Prepare students with job skills - “Middle Income”
 - Medical Field
 - Technology Skills
 - Computer and Industrial
 - Welding
 - Automotive
 - Truck Driving
 - Building Trades
 - Business Programs
- Job Search and Placement
 - Intern
 - Post Internship
- Transfer Help
- High School Connection
 - Coordination of course work and fill gaps
- Community Awareness
 - “Keys to Success”
- Staffing
 1. Admin - Leadership
 2. Academic

3. Support Staff

Continue to recruit and maintain “top people”

Projections of need

Nurture to Needs

Mentor

- Special Needs
 - Pathways at exterior as well as buildings

Job Ethics - Permeate all course work

- Job retention
- Job preparation
- Citizenship community responsibility
- Customer Service
- Job ethics
 - Attitudes
 - Self Assessment
- Respond to Boomer needs
- “Are we ready for the next generation”
- Online classes - more offerings
 - Night classes
 - Pre-recorded - integrity
 - Assessment component
- Responding to community job needs
- Declining jobs - “fishing”

- Is there college response?
- Decline of sports fishing
- "Green" college by example
- Foundation and scholarship
- Grant awareness
- Single parent family support - continue and improve support
- Facilitate student to staff connection - continuing education
- Monitor changing demographics in our college region
- Student retention
 - Trends and strategies

Staff and Faculty Focus Group
September 18, 2007
11 am

- Community Connections
 - Increased adult activities
 - Clubs/organizations
 - Adult enrichment class
 - Cake decorating/mushroom ID
- Increase youth activities (all ages)
 - Camps (sports)
 - Art/Music/Culinary etc.
- Open door policy - broad based community
- Maintain environmental quality of campus
 - Enhance - awareness
 - Green related programs
- Accessible campus buildings/paths
- LEEDS building materials/systems
- Climate sensitive building designs
- Improved circulation
 - Surfaces
 - Access
- Turf/landscape program
 - Dirty lab
- Program related space

- Specific programs
- Create Communities in each building
 - Staff/admin support
- Increase community awareness
 - To faculty resources
 - Spaces
- Student Health Care
 - Health and wellness center
 - Teach/Learn center
- Increase library hours of operation
 - Evening/weekends/hours for student needs
 - Update to 21st century
 - Dedicated - study areas
 - Future vision of the College
- Reduce barriers - physical psychology
- Deliver technologies for student needs today and future use
- "Community Partners"
 - In technologies with Programs
 - Business/training
 - Cutting edge
 - Ahead of the curve
- Raise presence/value to the community
- Student communications/interface with community

- TV/radio
- Create student commons on campus
 - Spaces throughout campus to foster interaction
- Alt. Transportation
 - Safe, pleasant paths
 - walking
 - bicycles
 - storage for bikes/lockers
 - Bicycle friendly community
- College connections to regional events
- Expand 4 year degree offerings and beyond
- Provide immediate needs to promote future program expansions

Staff and Faculty Focus Groups
September 18, 2007
1 pm

- Need storage space
- Need office space
- ADA requirements
- Graduation needs
 - Need 1500 to 2000 (currently 700 stagger ceremony)
- Branding in community
 - “identity” image of higher learning/signage
- “Green” campus, “Solar”, “Cisterns”
- No doors on bathrooms
- Dedicated natural areas
- Interpretive areas
- Integration of Newmark Center
- Safety, security - lighting
- Emergency phones
- Horticulture program
 - Turf and landscape
 - Golf tie
- Furniture program
 - Value added to timber
- “Hobby Shop” - engineer life long learning
- Senior housing

- North Bend Pool/SOCC program should have water polo
- Kitchen needs to be more efficient - outdated
- Intermural sports would be nice
- Nowhere to relax outside - fountain, or other gathering place is needed - artwork focus
- Remove bulleting board outside of Randolph - it is ugly and no real cover (not used)
- Student art could be incorporated in the campus
- Main entrance bus stop (plexiglass) is not adequate - hideous - more covered areas needed
 - Has turned into a smoking place
- Designated covered smoking areas would help
- Desk chairs in Sitkum are a challenge - came from the 60's, tables work better
- Eden 1 lecture room is a good style
- White classrooms are borrrring!
- Parking lot 2 ramp and curb has massive puddle that you can't miss
- Softball, baseball, tennis court area - metal shop area is muddy - disappointing
- New tower is needed
- New paving between softball and soccer field is good
- Back parking lot entrances would improve access and circulation
- West entrance left turn causes jam in housing area
- Favorite thing or place:
 - Management of storm water is pretty
 - Wrestling room is amazing
 - Next to cafeteria is a pleasant place - maintain it

- Infirmary - urgent care
- Married student housing
- Family center expansion - class room
- Student union building “coffee central”
- Student areas throughout campus
- Faculty and staff break rooms in major buildings
- Outdoor covered space
- Identify Quad
 - Student areas
 - Smokers area separate not second class
- Outdoor or open classrooms
- Cottage industry, tourism, demographic condition, boomers - how to take advantage
- Stronger connection to OIMB
- Garden tours
- Local cultural awareness
 - Tribes
 - Community history
- Connection to Port and Airport
- Eco-tourism
- Create better learning environment
- Home room concept
- Extreme flexibility

- Furniture
- Partitioning or seminar vs. lab
- Technology
- Lighting
- Different classroom environment
- Research possibilities “furniture”
- Study student/teacher interface
- Tioga is prison like “unfriendly looking”
- Semi-retired boomers
- Career center
- Outdoor bandstand
- Geriatric study - provider training
- Senior daycare training center
- Yurts concept
- Develop lake potential
- Landscaping study and determination - take advantage for studies
- “Ropes” course around lakes corporate training
- Hospitality programs
 - Conference center
- Fountain Dellwood - fix and/or move
- Circulation identification security - east driveway
- More sidewalks
- Parking study

- Second campus entrance
- Public transportation - Adequate and timing
- Swimming Pool - indoor
- Trail improvement
- Youth hostel

Staff and Faculty Focus Group
September 18, 2007
3 pm

- **Techno Buffs**
- **Boomer needs**
 - **Nursing programs**
 - **Clubs**
 - **Second career choices**
 - **Retirement classes**
 - **Financial planning**
- Single parent
 - **Housing**
 - **Child care**
- Facility expansion
 - **Adaptive reuse**
 - **Inventory of spaces**
 - **Space utilization**
 - **Cost/benefit ratio and appropriateness to space**
- Accessibility issues
 - **Second entrance to campus**
 - **Handicapped parking/ADA needs not minimums**
 - **Lake path accessibility**
- Natural resources
 - **Interpretive uses**

- **Develop pathway for visitors**

Curry Campus

Library services support

Tech and library support

Rehab and Remodel

Comprehensive maintenance plan - preventative

Life cycle costing

Asset management plan

Replacement plan/sinking fund

Classroom Environment

Sound

Lighting

Furniture

Bathrooms

- **Second story expansion on existing buildings**
- **Campus image appearance**
- **Turf and landscape as part of campus**
- **Exterior lighting, emergency kiosk or phone**
- **Married student housing needs?**

- Signage - need better in and out of buildings
- RV parking and pet area
 - "Long term student parking"
 - Bathroom

Bandon Focus Group
October 18, 2007 7:00 pm

- Hospital District is largest employer and they need health care workers - Health Care Workers
- Vocational programs were cut from secondary schools. Maybe the College could partner
- From a green perspective it would be good to have more out reach with the community
- Bandon would like a small facility - "A presence", to get GED and more from that
- This could happen in the Barn, which is being remodeled. This is being organized with breakout rooms to be used as a convention center and the City owns it.
- Get kids hooked on education. The College is the one to help with this. Hook them when they are young.
- Work with the K-12 schools
- Provide a portfolio program foundation program that sets up a program early for life planning that goes on through the years.
- Need plumbers, electricians, carpenters - unions need to be included and would be partners - Bridge absence of vocational programs in secondary schools
 - Apprenticeships
 - On the Job Training
- Tourist oriented community and SOCC needs to do training for service/hospitality industries.
- How to apply for a job and how to interview.
- How to interact with people
- Hispanic and other immigrants need to learn the system and need training. ESL and outreach and need integration. We need Spanish speaking instructors bi-lingual.
- It should be English as the 1st language to help the program grow

- Native Americans need to be reached - partner with them, especially the young kids
- Care givers could be trained - will be in high demand
- Learn in assisted living facilities how to serve dinners, dinner etiquette and move through the dining hall softly
- Continue to expose young people through skills day and other events that bring people to the campus
- Dress for success programs
- From Farmers Market and Others: Nutrition is basic - What do we do with food? People need to understand how to educate people about food. Governor has a funded programs about how to utilize foods - today's press release. Maybe the College can get together with this. Bandon could be the pilot project.
- A new kitchen will be in the Barn, and this could be the center for growing (master gardeners), cooking (home ec.) Serving and hospitality program
- People could learn to make money - start a business from growers that come on board
- Child care needs to be provided through child care classes. Child care needs to be provided for all offerings.
- Technologically oriented businesses need trained and skilled employees
- Technology is available within the community broadband internet
- On-line classes are proliferating and we need to continue.
- Theaters need to interface more. Bandon has a great theater. Have outside high profile come and book several places: Brookings, Bandon, Florence, SOCC.
- Don't build stuff. Use existing facilities

Myrtle Point Focus Group
October 25, 2007 7:00 PM

- **2 year program to transfer to the Universities** provides a good basis.
- University Center - at least 4 Myrtle Point teachers came through the Eastern Oregon Program.
- **Outreach on site is needed they have a room at the District Office that can be used.**
- **2+2 went away, but it is necessary to have it.**
- **Foreign language would be a good addition in Myrtle Point - could be Spanish.**
- **Health Care professions** need people
- **Lifelong learning is important** and it is the goal of the Myrtle Point School District
- Myrtle Point has gained back their forestry program and has an agricultural program that includes metal fabrication components.
 - Forest products
 - Field stuff
 - Construction component
- **GED program is good and needs to continue**
- **Expanded Options Program in combination with SOCC is good for the high school students. This is a new program.**
- Student population has dropped
 - Tag kids need services
 - **On-line could be stepped up**, but keeping kids on the site is important for funding.
- Myrtle Point has no large industry base
- Student population ebbs and flows
- **SOCC** President **is an important link with K-12 districts**
- **Forestry program at SOCC could build a Myrtle Point program and offer additional programs.**
- **Technology training is needed.** Text messaging etc. **Cell Phones, Internet. We have to be proactive about technology.**
- **Education needs to determine how to change our systems to utilize the social aspects of technology.**

Powers Focus Group
October 25, 2007 4:00 p.m.

- Distance education on line works
- Provide more high school classes that aren't available on line
- Fuel Costs equal problem
- Powers at the "end of the road"
- SOCC is an asset to us - good progress
- GED has been helpful and we could bring back the program
- College credits for high schoolers help
- Transfer class equals good start for University
- GED outreach every other year is an option
- Vocational programs are important
- Students need training for local jobs
- Forestry program was good
 - Reforestation
 - Thinning
 - Healthy Forest Programs
- Medical fields are expanding - nursing programs are needed
- Computer technology classes needed to keep coming here
 - Computer literacy is a must!
- Travel equals tuition free program was helpful (for residents)
- More scholarships are needed
- 2+2 and online classes here are important
- Adult basic education is needed

- **ROTA - Reserve Officer Training Academy was helpful**
- **Powers needs high speed internet for the general public**
- **GED online?**
- The high school has a computer lab and the more computer literacy here the better - maybe along with adult basic education
- **Students could mentor adults in technology if trained**
- John Berman's work with the high school is excellent. This function is important.

Reedsport/Lakeside Focus Group
November 1, 2007 7:00 PM

- **College programs for high school students** are good
- **Automotive programs** are good training
- **Horticulture** is missed
- **Outreach seems limited**
- Want to education and keep students when they are adults
- Economic development trend is bringing former students back with their jobs, etc.
- **Nursing program is a plus - a growing need**
- **Dorms a plus**
- **Bolster 2+2**
- CCI - Career and College Transition is important
- Dual credits provide career pathways
 - **Welding**
 - **Computers**
 - **Nursing**
 - **Construction**
- **Culinary careers can be expanded**
- Transitioning to higher education is possible because of connections
- **Enhance connections between K-12 and SOCC**
- SOCC has need space for convention and it is an asset - including dorm use
- Community College - education plus interconnections equals a wider world
- **SOCC needs to continue as an education leader**

- Technology is highly important as a tool for distributing education to all ages
- SOCC is necessary for economic development
- Options provided by SOCC are important but often bureaucratic
- Nursing and Pro Start Culinary contest is a nationwide program. Do it!
- Degrees for all ages contribute to the community
- Vocational education is needed (construction, etc.)
- SOCC provides financial advantages and allows schooling while young people mature
- Associate degrees combined with high school give a head start
- Partnerships with high school and SOCC can offer job tracking and more
- Communities not with a community college on site suffer - outreach needs to be organized and available
- We need some fun classes - locally - too much spread sheet stuff
- SOCC Culinary could integrate and do more hospitality in the community
- Culinary students need hands on within the community - this was done around Senora at a historic hotel
- College could host meetings and facilities food events
- Survival - mushrooming and other regional offerings would be good outreach - also art
- Seminars are an option if classes spread over weeks are a problem
- Partnerships with SOCC and the Discovery Center should be done
 - The facility holds 52 people
- Expand online classes for seniors and others
 - Workshops
 - Seminars

- Virtual classrooms
- Combined field work
- **Be unique to our region and partner with larger institutions**
- Online is not always a panacea - interactions are important
- **Dean Creek, Umpqua Lighthouse, B & B, Culinary could be an asset with course work for fun or credit to capture non-residents dollars**
- **Fire Science program** can take advantage of the hours when people are on call with apartments/dorms etc.
 - 3 fire departments here
 - Internship style
- **Library seem un-user friendly!**

**Student Focus Group
November 6, 2007 11:00 AM**

- Fire Science interns help out at local fire departments
- Facilities - new offices, classrooms, tower, burn building, apparatus are needed
- Students get good placements after SOCC
- SOCC is known for Fire Science but we make do because cities let us use their equipment which limits the cities
 - Chemeketa has more investment - a fire station
- Discussions are needed about this
- Up-to-date equipment helps students get experience and jobs
- Paramedic program is only year 1 here - students go to Lane or Umpqua for 2nd year
- Jobs now are for paramedics
- SOCC has 1st responder, EMT basic and intermediate
- Paramedic was considered 4 years
- Paramedic staff is needed and a facility
- Instructors for fire science are part-time now - with jobs
- Chemeketa programs are now full
- Covered walkways would help
- Security lighting at night would help
- Track and field needs night lighting
- Sharing city pools could be enhanced with more times and reduced student fees
- New Rec Center needs bleachers
- Seats and parking are essential for events at new soccer/track field

- **Javelin and hammer throwing facilities are needed**
- Workout Center - would benefit cadet fire science programs and other - Coos Bay is providing now
- **Firefighter workout program is needed**
- **Fire Science field is using tracking systems, GPS and other now - new technology**
- Now new equipment - rescue straps etc.
- Chemeketa has tracks for various levels including management and fire prevention training
- **Wild land fire training is another aspect**
 - **Turf management and forest management topics that are related**
- **Wood Shop for the trades is needed here and could build on the Marshfield program and tie in with fire prevention**
 - Have programs build on each other to provide for fire facility needs
- The fire tower is dangerous
- Interactions between programs can provide experience and enhance programs - more hands on training
- **ARFF - Airport Rescue Fire Fighting - closest is Helena, Montana at School of Technology**
- North Bend now has 6-9 sleeper cadets who are on shift at night
- **Have SOCC Board hear from local fire chiefs regarding sleeper cadets**
- Fire Science program needs a better “face”, “show” to the world due to facilities
- A & P programs are limited by technology - can’t get on Internet etc.
- Radios are needed for Fire Science
- Charleston sleepers are sometimes first on and a growing program equals better permanent careers
- **Online classes help when fire science students pull shifts**

- Benefitting community - This is a key to success - a partnership:
 - Fire Science Program
 - Vocational Programs
 - Wood Working
 - Hospitality etc.
- Recruitment can be done by students in programs - this is a “sell”
- Students in Fire Science come from various states and local region
- Where is tennis program?
- Where is swim team? And pool?
- Massage therapy training could be offered
- Training for new industries
- Culinary students could have stepped up internship - “Hands on” is key
 - Seafood Friday dinner or other for the community
- The Fire Science/EMT has put together a Power Point presentation to show the board: Contact Rick Cooper at 888-2006

Student Focus Group
November 7, 2007 5:00 PM

- **Student programs are stronger and have more advocacy when there is a student advisory committee**
- The program here - fire science has more hands-on and attracts people from all over
- **Heaters in halls don't work - old**
- **Nursing program needs expansion - people are getting turned away and yet we need nurses. The number of students that Submitted nursing applications were approximately 80. Out of that number 65 were considered true applicants (they had actually completed the requirements). We accepted 27 students into the program.**
- **Nursing internships should be at local and regional hospitals**
- Other programs around the state turn students away also
- **International program**
 - **Needs varied languages**
 - More programs
 - **Bring in outside cultures**
- **Include more recycling, energy efficiency, solar energy, etc.**
- **Testing center gets crowded (Randolph) and people have to wait**
- Paramedic program is needed because people come from distances for fire science and now they are driving to Roseburg for classes
- Our fire science is superior to Chemeketa but Chemeketa has all the facilities
- The fire science program here has many extra opportunities, but some gaps
- Paul Reynolds and Robbie Kirch are great
- **Criminal Justice/Corrections needs some of its own space, approximately 70 people in program but 4 annual internships**

- Tioga is a more interesting building
- Empire Hall is attractive
- We would like to use credit cards for food service
- A "hall of fame" or trophy area would exude pride
- Gym seating is limited
- Prosper and gym need to be redone
- Drop down light in new gym is needed
- Coffee cart area with quality coffee should be on site - maybe bookstore could do earlier and later
- Patio area could be plexiglass outside Stensland
- Public safety needs better office
- Shuttle from outlying areas - look into it
- Waiting room at First Stop is a mess - there are unneeded walls and people who work there are not visible
- First Stop - just take out walls and redo statue area
- Sitkum heater is disruptive - also others
- Library is not laid out well - 3rd floor is a good study area
- Coffee shop needs to be implemented ASAP
- Path in grassy knoll is needed east of Empire Hall entrance
- Smart boards in classrooms are great - in Coledo, Stensland and 2 or more nursing classrooms
- Covered bike racks and more bike racks are needed
- Some classes have been held in rooms that are inappropriate - i.e. Mythology in nursing rooms
- Expand to the east - more buildings for more classes

- Consider a 2nd site - maybe downtown to conserve the environment
- Integrate campus buildings - expand in other communities
- Game room should be by housing - current location of game room is a secret
- Go for University status
- Wild land fire fighting degree - offer it

Coos Bay/North Bend Focus Group
November 8, 2007 7:00 PM

Important Things:

- Student outcomes are key
- Close collaboration with high schools
- College is evolving and educates the entire community and plays an educational leadership role and community is evolving
- Broad based economy needs broad based education - training for business
- Labor pool - struggle to recruit - create capacity to meet the need
- Managers need training
 - City police
 - Fire
 - Criminal justice
- Community needs to connect with SOCC to understand opportunities
- Adult ed classes bring the community in - there used to be an emphasis
- Baby boomers are leaving management jobs
- Blue collar needs like truck driving exist
 - UCC has logging course - class didn't fill
- Registered Nurse program - some will be online
- Demographics reflects contracted timber industry
 - Small business
 - Ship out children
 - Less young families
 - Mill culture was to stay home

- 1960 = Bumper to bumper ships - lumber part
- Old way - labor and management
- Change in 1980 and on
- Social problems result from the past educational expectations
- Outside influences are affecting us in a positive way now
- The middle class is what left
- Now the middle class is reviving: We need to prepare to serve this group
- World class resort is here with its opportunities - we may see more
- Success is often a result of getting out of the way
- When we have choice what do we do?
- Fast and flexible is how SOCC needs to respond
- Prioritizing and decision making are skills that the citizens need
- Spin-off jobs and industries will occur
- Single family housing will grow - need trade vocations - needed for at least ten years
- Think:
 - 10 years
 - 20 years
 - 50 years
- **Worker housing complex could be built and then become married student housing**
- City will streamline permitting and will staff for building inspections, electrical, plumbing - training needed
- Shortage of workers now
- For a time vocational programs were dropped and replaced by academic

requirements - get back some emphasis on vocational programs

- Should we become a 4 year college? Would it cause us to lose other functions that serve our area?
- **University Center** here is successful - maybe we can expand and do more
- Our population in Bay Area will spike
- The community needs to know SOCC - sell it and expand programs
- BDC will provide more for startup
- We need to learn to utilize our resources in the region in new ways
 - Habitat
 - Environmental sustainability and natural resource base
- Physically we cannot expand indefinitely - creates different opportunities
- College could help facilitate growing / sharing concepts among cities/governments
- **Health care needs are expanding**
- Service workers need training
 - Front line
 - **Trades - builders, granite**
- **Internship expansions or opportunities could be enhanced**
 - Industries need to get involved - market to the businesses (also internal internships)
- Paradigm will change to a more local economy - self sufficiency over 50 years
- **Medical needs will continue to grow**
 - **Pharmaceuticals etc.**
 - **Transportation?**
- Congestion in larger cities will create new opportunities here

- Quality of life
- **Flexible buildings - some have to be specific but some multipurpose**
- SOCC locations:
 - Brookings
 - Online
- Community involvement needs to be fostered through SOCC
 - Classes
 - Requirements
- Teach people to identify core issues so they can be involved and express core issues
- Speak with one voice to Washington DC - College can facilitate

**Coos Bay/North Bend Focus Group
November 15, 2007 7:00 P.M.**

- Resource for the community
- Nursing program shortages of tech people at the hospital and nurses
- SOCC provides opportunities for all ages
- **Partnerships - internships provide a head start and help employers**
- We want to be more than an average community college
- Programs need to expand - do it ourselves
- Night classes are good for business people
- **Partnership of hospital and SOCC is key**
- SOCC is for various groups - **life long learning**
- **SOCC fire science program - 11 at charleston fire department now - volunteers and students (sleepers). Training facility needed**
- Would like **paramedic program**
- Vocational training is good role
- **Vocational training - jobs**
- Fire science can run in families here
- SWOFA = Florence to Port Orford to Scottsdale and the people train here
- 1980s planning brought medical needs to the top
- To be more than a community college
 - Housing
 - Nursing
 - Culinary Arts
- Now we rely too much on education bureaucracy around the state, OHSU and others - we should not let others limit us

- Others medical programs
 - EMT
 - Phlebotomy
 - Radiology
 - Nuclear Medicine
 - Physical Therapy
 - Dental hygiene
 - Rehab
 - Sports medicine
 - Conference of Annual Training for EMT's
 - Statewide Partner with Hospital
- Environmental Fields
 - Forestry Programs
 - Silviculture
 - Horticulture
 - Demand Fields
 - Sustainable forestry training
 - Forestry and other
 - Remanufacturing
- Medical Training needs continued
 - Geriatric specialties
 - Nurse practitioners
 - Ongoing nurse training

- **Physicians assistants**
- **Ophthalmic assistants certification programs**
- Vocational fields need people
 - **Automotive**
 - **High schools and college need to collaborate - high schools can feed SOCC programs**
 - **Management for small business**
 - **Leadership**
 - **Personnel management**
 - **Electronics**
 - **Construction trades**
 - **Contractor licensing**
- Example: Collaboration with truckers and new truck driving program
- **Electrician training program**
- The media is part of the necessary exposure
- **Interface with the businesses to see what they need**
- **Alternative energy science and environmental sciences**
 - LNG coming - find out what is needed for training
 - Companies come when the work force is ready
 - **OIMB could be a partner**
 - **Wave energy**
 - Project management and project coordination
- Technology
- **Elected officials need training - special districts, boards, etc.**

- Criminal justice exists
- Veterinary Assistance
- Hotel Management
- Housekeeping
- Human Resource training
- Safety programs - OSHA
- Specialty training for employers - employees
- Emergency response (Wal-mart now training in shop)
- Telemarketing is growth industry
- 911 Training is now at Board of Police Standards and Training
- Delivery mode needs to include on-line
- Web Master
- Internet management certificate programs could feed into BA and BS programs
- Enhance existing programs to meet community needs as listed above
- Methane energy environmental testing skills needed
- Trouble shooting skills are project management skills
- Apartment housing could house people for short courses in the summer
- Have summer short courses that enhance programs
- Media and broadcasting - coordinate with high school program
- Keep lifelong enrichment programs going to keep in touch with community
- "Community" is tax base
- University center here is successful from every public university in the State
- Fire training facility: 300 fire fighters in Coos County only - we have no burn facility and are going to Eugene

- **Structural training**
- **Aircraft training**
- Transportable facilities exist and FEMA grants exist (march)
- **Food handling - cranberries and other agriculture meat processing**
- **Inspector training - agriculture and real estate**
- **Training films could be produced by students**
- **Hospitality**
 - **Hotel Management**
- **Businesses could underwrite specific training**
- **Fish and wildlife can be addressed under environmental topics**

**Faculty Focus Group Notes
November 16, 2007 3:00 P.M.**

Physical Needs

Programming Needs

- College must be commuter friendly
- Graphic art degree
- Web design
- E-marketing
- "Walkway of Success" - sidewalk/names in brick
- Hands on vocational technical programs - mechanical
- Marine
- Automotive
- RV
- Improve existing programs (industry currency)
- Exit strategy, transition from degree - job (career center)
- Work closely with businesses to establish a business' current needs
- Strengthen relationship with both high schools and middle schools
- Make students aware of what SOCC has available
- Focusing on students getting a career
- Curriculum alignment with high schools
- Develop curriculum for high schools to mesh with SOCC courses
- Signage for University Center needs to be improved
- More Personal Relations
- Aesthetics to be attractive and encourage people to stay

- Use colors to make spaces/buildings more attractive
- Improve acoustics (cafeteria noisy)
- Areas/places for students to interact with instructors
- Meeting lounge
- Different size rooms
- Lighting levels to encourage learning
- Temperature control to encourage learning
- Learning modes
 - Diverse environments for learning in same building and rooms
- Community Leadership Center
 - Studies of the northwest environment
- Community does not see college as a leader - it should be
- SOCC must be first choice for education
- Circular road around the campus
- Centralized control of light and heat
- All rooms to have up to date technology. Fiber ring not fiber star
- Improve campus directional signage
- Create a college brand for 50th anniversary
- Students do not have pride of ownership - need trophy display
- Umpqua Hall - currently geographic center - potentially student center

Trends

- Aquaculture (fishing trends), fish farming, connect with OIMB
- Golf/Recreation, maintain relationship with Bandon
- Second career, retirement
- Community education
- Personal development (seniors)
- Need to be 10 years ahead in creating courses
- Classes for volunteerism, community services, languages, global programs
- International business program
- International studies, business, "e" commerce, language, culture
- Reduce carbon footprint
- Help others with sustainability
- Health care - broader area
- Green technology
- Climate change
- Experimental learning (designing websites)
- "Hands On" learning
- Link to 4 year schools - integrate
- Use Baby Boomers to teach others
- Education has changed. Students need to be able to evaluate critical thinking - know where to find resources

Linking Courses

- Pre-nursing/Anthropology
- Political Science/Nursing
- College prep - teach differently
- Engineering/Art - Architecture
- Math/Music
- Music Thanatology Therapy
- Reading/Math
- Content/Developmental Education
- Art/Anthropology
- Business/International issues
- Music/Geography, Sociology
- Food/Sociology
- Fusion Programming brings Faculty closer, honors adult learning
- Communication/Technology
- Literature/Health Care/Technology
- Forensic

Coquille Focus Group
November 29, 2007 7:00 p.m.

- **Outreach is important - local classes**
- **Lifelong learning and emphasis on entry into higher education**
- Long term is the important aspect
- **Visibility of the college and OCCl should be in outlying areas**
- **Ties with high school students - 2+2 and other interconnections create opportunities and give students a view of what is possible.**
- **Housing on campus is a good experience, so young people can live away from home but still be close to family**
- **On line courses should expand**
- **Returning to education is a function of the community college - transfer courses are key**
- **Area families have SOCC attendance "traditions" - education is cost effective**
- **Retirees** can take classes
- **Classes on line should** expand like MIT
- MIT includes:
 - **Syllabus with notes**
 - **Bibliography**
 - MIT **course ware**
 - **Lectures**
- **Transfer to universities aspect is helpful**
- **Non academic classes provide social and educational aspects**
- Former students have leadership positions in many places
- **Try to be 4-year university**

- Math and sciences are a good focus
- Vocational skills need emphasis
 - Building trades and related skills are needed
- Partnerships with universities helps keep professionals coming back or retraining
- University Center
- Keep the costs in line
- Scholarships need to continue
- Competitive golf led to careers related to golf
- Pathways degree
- Aging society. Training needed to assist those who are aging
 - Healthcare
 - Financial planning
 - Geriatrics
- Global warming
 - Viniculture (grapes) may be appropriate. We have water and the climate for it
- Watch for the crunch on general education classes - keep people moving throughout the system
- Advisors should be highly trained by discipline
- Trends - need for workers
- Oregon resources - mining, trucking, plant management, LNG container port needs workforce
- Container facility
- Aging population
- Manufacturing to service economy

- **Natural resources** - managing them
 - **Horticulture**
 - **Habitat**
 - Restoration
- Natural resources
 - **Fisheries enhancement**
 - **Water quality needs** and water runoff utilization will increase. Training need for all aspects related to water due to population
 - Be a front runner in water and other environmental aspects
- **Tourist industry**
 - Promotion
 - Protecting resources
 - Major golf events need hospitality enhancement
 - Bicycling
 - Teach hospitality skills/instill pride and efficiency
- Help the community identify identity and build on this
- Integrate new retirees with long term residents to focus
- Education should focus on the needs of our communities - internships and other connections such as restaurant management - hands on
- **Eldercare internships**
 - Keep with what the market of South West Oregon needs - ever changing
 - Move towards trends
- **Offer classes that attract new people to the region - be the best at something - Nursing, OCCI**
 - Families of out of the area students usually move here as a result of the

student liking the area

- **Construction** permits are up. This is a market opportunity
 - Skills needed
 - Licensing is requiring on going education
- SOCC was approached by a national expert who lives here about classes for gunsmithing because they had the tools - this was an opportunity to be unique and we can do it. We also have national experts in other fields who could offer education and training opportunities
- **Use local expertise and specialities to build unique programs**
- **Law enforcement program should expand**
 - People who were in the previous program stayed in the area
- Jefferson school could provide an opportunity as it is vacant
- Appraiser training could be here
- **Appraiser training**
 - Coos
 - Curry
 - Douglas
 - Josephine
 - Jackson
- **Numerous specialities need continuing education**
- Offer continuing education for all the professionals

Focus Group Meeting Dates

Curry County

This detailed summary as well as the original focus group meeting minutes are color coded. This color coding allows the reader to refer to the original Focus Group Minutes to verify each summaries ideas location and initial wording.

The Curry Campus Student Focus Group report was included by Curry County students as it was succinct and complete when forwarded to us.

1. Brookings, May 24, 2007 (2 meetings)
2. Gold Beach, May 31, 2007
3. Community Commission, June 20, 2007
4. Coos and Curry Staff and Faculty, September 14, 2007
5. Port Orford, October 18, 2007

Detailed Focus Group Summary
(Ideas and concepts mentioned more than once are underlined)

Community Trends

Brookings

- Expensive housing
- Tourism growth
- Transfer income - second or part time homes
- Aging Population - growth in medical services
- Active "well-to-do" seniors
- Technology driven cottage industries - Internet business - E trade
- Service industry growth
- More retirement age voters i.e. school funding

Gold Beach

- Aging population
- Lower student population - less school programs
- Fewer family wage jobs
- Less government services available
- Increasing real estate values versus lack of affordable housing
- Technology increases
- Seasonal tourism
- Government is largest employer
- Ports role in the community is lessened
- Area is isolated
- Area has rural work ethic
- Strong and growing "creative" community
- Need to promote volunteerism

Port Orford

- Aging population
- Increasing energy costs
- Reduced K-12 budgets - less programs available
- Demand for job and skill retraining
- Growing home school population
- Lagging communication and technology network
- Diminishing financial resources
- Decreasing young adult population
- No public transit

Who We Need to Serve:

- Traditional Students - Associates Degree
- Adult - Self Improvement, GED
- Workforce Employee Training
- Returning students
- Recreational Learning (Active, Life Long Learning)
- High School - 2 + 2
- Transfer students "First Year" college classes for 4 year degree students
- Distant Students: Distance learning throughout service areas
- Short program students
 - Conference training
 - Tourist classes and camps
 - Continuing education

We Should Partner with and Provide Services in Conjunction With:

- High Schools
- Local businesses
- National Parks
- Good Samaritan Health
- Interpretive Center
- Smith River Destination Resort
- Collaborative Resource Development
- Port of Brookings Harbor
- Port of Gold Beach
- Port of Port Orford
- Lily farmers
- Intern program
 - Ambulance
 - Fire
 - Police
 - Hospital
 - Others as developed
- Businesses development center
- Partnership both buildings and programs - libraries
- Oregon State University
- University of Oregon
- National Stake Holders

*Curry County Is Unique, Our New Campus Should
Incorporate and Embody this Uniqueness:*

- Geology
- Scenery
- Wildlife
- Marine research opportunities
- Native American history
- Coast Guard and lighthouse history
- Artists community
- Wind and wave surfing
- Major bird migration route
- Whale migration
- Oceanography
- America's Wild River Coast
- Kayaking
- Fly Fishing
- Unique watershed and water quality
- Extensive coastline and State Parks

Our Campus Should Also Have:

- Sustainability
- Accessibility
- "Uniqueness" but still part of SOCC
- Alternative energy design elements
- An eco-awareness

*Programs That Respond to Trends and Interests
(needed in each community as well as new campus):*

- 2 Year Associate Degrees
- Need “Flagship” program
- “Cluster” programs
- Weekend/Short course programs - tourist and/or corporate conference add ons
- Property Management Program
- Visual Arts Programs
- Hospitality Industry Training Program - Use Dormitories
- Floral Studies - large diversity in Curry County
- Alternative Energy Educational Program
- Customer Service Skills
- Business Training E -Commerce
- Computer Skills
- Business Planning and Development
- Machinist Certification
- Welding Certification
- Nursing Program and Certified Nursing Assistant
- Sports Camps
- Teaching Conferences
- Environmental Sciences - Water Quality Watershed Protection
- Trade School Programs
 - Construction Trades
- Medical Services Program
 - Nursing
 - Physical Therapy
 - Mortuary Science
 - Massage Therapy
 - Pharmacy
- First year college classes
- Conference add ons
- Tourist classes
- GED program
- Advanced college credits
- Industrial engineering
- Production art
- Healthcare
- Early childhood educational training
- Continuing education programs for professionals
- Organic gardening
- Technology programs
- Art and music programs
- Shop classes
- Adult education classes

- Geriatric program
- Culinary program
- Kids program

Can We Do this Also?

- Tuition exchanges
- Draw from area “expertise” through workshops and mini courses
- Create Small Business Development Center
- Connect a transit system to campus
- Incorporate Aspire - mentoring programs
- Create environment which promotes student life

Our Facility Desires:

- Full Year, Full Day Facility Usage
- Study areas
- Swimming pool
- Exercise facility
- Rehearsal/Performance Facility
- Community Center Room/Conference Center
- Covered walkways
- Well lit and signed
- Library/Resource Center
- Dormitory/Housing, Elder Hostel
- Student restaurant
- Kitchen facility
- Internet access
- Flexible spaces - usage and technology
- Band/choir rooms
- Meeting room space - “free usage”
- Adequate storage
- Lockdown accommodations
- Sheltered exterior spaces
- Multitmedia access for students
- Maintain natural landscape
- Registration accommodations
- Adequate parking
- Student congregation area
- Smart boards

Other Campus Programs or Possibilities:

- Outdoors Clubs for students
- Daycare and/or early childhood development co-op on Campus
- Bike trail/walking trail to campus
- Educate 101 traffic to Campus location
- Adolescent mental health accommodations

Additional Comments:

- Large tracts of federal land - no taxes generated
- Child care needed for classes in each community
- Increase SOCC presence in each community
- Provide workshop and mini courses in each community using community expertise
- Job connections need improvement
- Broadband internet connection needed throughout service area to promote distance learning and other communication
- Graduations in Curry County are a vision
- Accommodate conferences sleeping needs - dormitories - home stays

Curry County Student Focus Group Dialogue Summary

Facility Planning and Grouping Activity:

(Participants were asked to write down their top 3 “needs” for the new facility. They wrote each item on a 5x7 card and then posted them on the front board. As themes developed, items were grouped together. This is a synthesis of those groupings.)

- Architecture that enhances learning
 - 1 room for each class
 - Sinks in each classroom
 - Storage in each classroom
 - Natural lighting
 - Student Center – lounge and study area
 - Pleasant working environment
 - Large classrooms
 - Student Success Center
 - Handicap friendly
 - Warm learning areas
 - Drawing and Art Room
 - Student Lounge
 - Resource center
 - Outdoor study area
 - Walking trails

- Pleasant surroundings
- Flexibility
- Ability to meet future needs
- Science labs
- Chemistry labs
- Nursing classroom
- Excellent Academic Staff
 - More faculty members
 - Tutors and mentors for all students
 - Tutoring Center
 - Learning Center
 - Lifelong learning emphasized
- Programming
 - Art programs
 - Nursing
 - Career related programming
 - Library
 - Lifelong learning
 - Career Center
 - Job training interfaces with employers
 - Business resource center
 - Hands on training
 - Science program
 - Animal class
 - Senior Programming
 - Service sector programming
 - Community gathering and events area
 - Forestry
 - Focused subject areas
- Technology
 - Laptops available
 - Wireless access
 - State-of-the-art computer labs
 - Science labs
- Health and Fitness
 - Walking trails
 - Healthy food options
 - Exercise room
 - Large Gym
 - Food Court
 - Racquetball court
 - Dance area

- Exercise area
- Multipurpose room for sports and activities
- Recreation facility
- Bike paths
- Walking track
- Cafeteria

- Partnerships
 - K-12
 - OSU
 - Local business
 - Networking hub for community
 - Business center

- Transportation
 - Bike path to town
 - Transportation system

- Child Care (5 cards)

Curry County - Brookings Focus Group
May 24, 2007 at 4:30

- Plans - Education is accessible, Curry facilities need to be sustainable
- Employee Training
- Adults Classes
- Student Classes
- Adult Education - retired, self improvement - for education not only hobby.
- Active learning and living programs
- Maintain uniqueness of Curry County Campus but still be a part of S.O.C.C. District.
- "Sustainability"
- "Flagship Program" - What is it?
- Close to home.
- Smaller scale.
- "America's Wild Rivers Coast"
- Tuition exchanges with surrounding areas.
- Cluster Programming (Example: Restoration Class)
- Draw on Existing Area: Expertise
- Trends in community - ½ income is transfer income
- Second or part time homes - property management
- Weekend or short courses, flexible scheduling
- Kinds of Students:
 - Traditional student
 - Cluster program

- Returning students - life long learning
- Happy students
- Employee training - tech. business support
- High school student - additional
- Health Needs:
 - Swimming Pool
 - Exercise facilities
- Rehearsal and Performance Facilities
- Large Community Center type room
- Large interest in visual arts
- Small Business Development Center Partnership with College
- Trends: Aging population
- Facilities:
 - Well lit
 - Signage and Marking
 - Registration
 - Adequate of parking
 - Connection with transit system
 - Covered walkways
- Housing:
 - Low Income
 - Student Housing
 - Smaller families, more pets

- Alternative Energy
- More floral types in Curry County than any other county in the United States
- Fund aspire programs - mentoring program
- Create environment to promote student life
- Physical presence
- Full associate program - 2 year
- Library
- Partnerships:
 - Curry Good Samaritan - Health
 - Chetco - Business
 - National Park
 - Interpretive Center
- Large destination hotel at Smith River
- Dormitories:
 - Hospitality training
 - Elder Hostel
 - Kitchen somewhere
 - Student Restaurant
- Student Congregational Area:
 - Food
 - Study
 - Internet Access
 - Kitchen

- **Dormitories - Curry County Campus**
- **Alternative Energy:**
 - **Education**
 - **Design Elements**
 - **Ambient Lighting**

06345-BrookingsFocusGroupNotes.Shoji.5.24.07 4.30pm.wpd

**Curry County - Brookings Focus Group
May 24, 2007 at 7:00 PM**

- Business Retention and Planning
 - Customer Service
 - Computer Skills
 - Business Training - E-Commerce
 - Strategic Business Planning
 - Business Development
 - Machinist Certification
 - Metals - Welding Certification
- Collaborative Resource Development
- Nursing Program - CNA Classes
- Retirement Community - Funding
- Top end classes for high school and college, cost driven to keep college cost down, credit recovery classes, G.E.D.
- Associate Degree
- Retiree Programs - Cultural programs, life long earnings
- Eco-Awareness
 - Expertise of retirees
 - Basic college course work
 - Increase in first year programs for young college bound students
- Community Building - Center - Resource Bank
 - Performing Arts Center
 - Large group activities - conference

- Flexible space - conference
- Band/Choir Performance Space
- Resource Center - materials, periodicals, focus
- Meeting Room Space:
 - Local 4H (meets at Veterinary Clinic), Weaving Guild, Quilter's Guild
- Strong Community Orientation - Free Space
- Unique aspects of Curry County:
 - Wild Rivers Theme
 - Watershed
 - Fly Fishing
 - Kayaking
 - Outdoor Club for Students
 - Environmental Science - Water Quality, Watershed Protection
 - Oceanography
- Tourist Classes
 - Conference add ons
 - Elder Hostel
- Teaching Conferences
 - Sports Camps
- Port Connection
- Lily Farm - Migratory Workers
- Bike Trail - Walking Trail

- Open up Access
- Curry Transit
- Drivers Education
- Daycare Facility at campus
- Early childhood development co-op to promote new parent or younger single parent participation

06345-BrookingsFocusGroupNotes.Shoji.5.24.07 - 7pm.wpd

**Curry County - Gold Beach Focus Group
May 31, 2007**

Trends

- Older population
- Losing student population
- Loss of family wage jobs
- Less government - fewer services and employees
- Increased automation, technology - internet
- Not a lot for kids to do
- Increasing real estate values
- Lack of affordable housing
- Government is largest employer
- Freeman Marine is second largest employer
- Loss of timber dollars - need to fill the void - our livelihood
- Fishing down also
- Port cannot recruit as in the past
- Geographic isolation - transportation etc. is difficult
- Tourism jobs are seasonal
- Unique aspects - coastline equals 25% of Oregon coastline
- Natural beauty and natural resources
- 60% Federal land - no taxes generated
- State parks and other parks and outdoor recreation
- Rural work ethic
- Strong creative - arts, crafts, writers

- Strong interest in volunteerism (skills etc.)
- Volunteers are hard to find - they are diminishing
- New residence may be more selective. People burn out.
- So many boards and organizations
- Programs become more difficult when high school student population goes down
- We need backfill through partnerships
- Advanced college credit should be explored
- We have some advanced college credit classes in Gold Beach - Free 2+2
- Backfill programs needed
 - Art
 - Music
 - Shop - wood, metal
 - Small engines
 - Construction
- Freeman Marine does on-the-job training - students are not showing interest
- Connections are missing and source of applicants is not available
- Health care - nurses are coming and there is little turnover - CNA's finish here
- Long term care facilities have needs
- RN's go to Coos Bay to finish - it would be good to finish here
- Hospital could have 1-2 days and 1-2 nights students

Needs

- Distance learning components are important
- More technology

- More adult programs
- On-line flexibility equals opportunity
- Bandwidth is a need - dial up is hard
- Practical courses are important - not necessarily degree
- Would like to attract outside people through what we offer - something unique that will attract new residents
 - Geriatrics
 - Kids programs/schools
 - Adolescents - mental health facilities
- 4 year University Programs - the more locally the better
 - Bandwidth is a problem for good interactive system
- Expand distance learning to new net meeting software
- Chalk - talk smart board
- Collaborate to maximize facilities - use public library using reserve academic books = conference room
- Enhance networking of information base - library/SOCC
- Partnerships for space etc. will be a necessity
- Curry County library network has national TLC system that needs bandwidth
- Spouses working at different places provide opportunities and drawbacks - Educational opportunities help
- Culinary field could be expanded in Curry
- Recreation is an asset that brings people - how can we tie in? Summer workshops?
- People have planned vacations around kids art workshops - art week.
- Other events - college sponsor culinary week with samplings

- Motel rooms are becoming condos so we may be short
- Home stays are an option
- School District does football camp. Softball camp for adults could be an opportunity
- South Coast writers conference is an asset
- Elder hostel could be explored
- Graduations from Curry County are the vision. The facility will make the programs more visible - a presence is important
- Meeting space or multipurpose is key

06345-Gold Beach Focus Group Notes.5.31.07.wpd

**Community Commission Focus Group
June 20, 2007**

Curry County:

- Less opportunity for large industry
- **Need for adult education will grow**
- Large residential development (Rio Tinto Zinc 800 units of mixed town houses and single houses).
- **Median house price \$325,000**
- **Large retirement population but have wealth, and are younger and more active than typical retirees.**

Bandon:

- As above regarding retirees, but older retirees and still active.
- A lot of high quality artists and cottage industries
- Decline in numbers of children
- Looking for theater, jamming sessions, workshops that are short
- Trend for high end services, mud bath, spas
- Successful City but population changing same as in other areas
- Subdivisions going in
- Fishing intermittent but charter boat business expanding
- Airport to play a major role
- Oregon Overseas
- Bandon Dunes spawned transport companies, laundry companies
- School system struggling
- Bandon Dunes largest employer. Hospital second.

Reedsport:

- I.P. gone. Property being sold for condominiums
- Condominiums on Schofield
- Until recently no lots available. Local investors making property available.
- Development of Wave Energy optimistic sign for the growth of the community
- American Bridge - Has not met expectations in terms of increasing employment and stimulating economic growth.
- Bolin Island: Wood pellet mill slated for 2008
- Student numbers are dwindling

Gold Beach:

- Measure 37 claims potentially releasing land for development
- Condominiums becoming a popular development
- **Employment levels reduced by decrease in County budget**
- Freeman Marine doing well
- **Forest Service minimal employment**
- **There is a Cottage industry built around technology**
- Seafood Broker
- **Housing expensive**
- **72% of Curry County is owned by the State which impacts potential income growth from property taxes.**
- **Gold Beach is strong on natural resources**
- Airport has been given a grant
- **Port of Gold Beach still in turmoil. River mouth not being dredged and is silting up.**

Ron Olson:

- Momentum of incoming businesses
- People working over internet
- Growth of mom and pop service industries

Brenda Rogers:

- **Can young people afford to live here?**
- **Tourism**
- **Service industries**
- **Medical services**

Response to Trends:

- Consolidating schools as programs and funding dwindling
- Encourage trade related careers. High school diplomas and trade
- SOCC to work with schools on technology so several schools have the same classes.

Recruit outside area

FTDE?

- **Hospitality**
- **Carpenters**
- Massage
- Beauty school
- **Nursing**
- **Physical therapy**
- **Mortuary science**
- Education opportunities for start over “gray hairs”

**Coos and Curry Staff and Faculty Focus Group
September 14, 2007**

- **Expand health related programs**
- **Flexible space needs**
- **Facilitate current and future technology**
- **Unofficial meeting spaces**
- **Community friendly facilities**
- **Partnership buildings and programs**
- Accommodate student and business needs
- Community ed training
- **Flexible size spaces - smaller and larger groups**
- **Full year, full day - facility usage**
- **Secure storage - long term**
- **Formal meeting space**
- **Wind shelter useable exterior space - meeting and classroom sized**
- **Access to technology - multimedia access for students**
- **Lock down accommodations**
- Accommodate Fire Science
- **Green technology and buildings**
- **Accessibility**
- **Accommodate daycare and parent/child housing and related academic programs**
- Simulation education and technology
- **Collective college identity but maintain individual identity**

- **Maintain natural landscape**
- **Child care program**

Community

- Hospitality/service
- Respond to “Casino”, “Bandon Dunes”
- Student health center
- Rec Center/Rehabilitation program
- Job skill area - flexible use
- Family wage jobs - returning students
- Expand internship programs
- Leadership Institute
- Promote campus location throughout community
- Faculty/staff space/part time informal break areas, employee gatherings
- Long range learning - translation
- Longer life spans - active
- Accommodate cultural diff
- Additional job training
- Long term care

Long Range Thoughts

- **Shared programs and facilities with high school**
- Second floor/is single story for long range facilities
- Campus plan
- Campus circulation

- Campus front door
- Eco-tourism
- Container facility - Flexible training space
- Regional/community transportation system

Curry County - Port Orford Focus Group
October 18, 2007 4:30 pm

Trends - Needs and Opportunities

- **Graying Community**
- **Communications - technology is non existent - among lowest in the nation**
- **Education is getting distributed in homes, small groups, etc., but distance learning is constrained here**
- **Retirees are resource here for education, professional and educator experience**

Trends

- **Kids leave and get educated but we need skilled people for our community**
- **Energy prices going up**
- **Public transportation is nonexistent**
- **K-12 has fewer children each year so programs are being cut at lower levels**
- **Partnerships with K-12 age plus college exist**
- **We need to offer topical workshops here using local professionals (mini-courses for high schools, home schools, care givers etc.)**
- **Demands for job and skill retraining are up**
- **Care Connections is a good program and this kind of training school should be expanded**
- **We need on-site child care**
- **Diminishing resources - financial**
- **2+2 - kids get college credit and this should be expanded**
- **Licensed child care is not available**
- **We need to increase training for health, wellness, health care workers**
- **We would like the presence of SOCC increased here**

- **Businesses need employees - training**
- Creative presence could help reach the community
- Distributed education is needed
- **Port Orford will soon have a new library**
- **There is an active and growing home school group here**
- **Organic gardening**
- Natural opportunities
- Montessori School is in Langlois
- **There is a “green” trend with home schoolers**
- **Unique aspects could encourage a greater SOCC presence and variances to the usual expectations of the campus rules are needed**
- **SOCC needs to step up to the plate or other leadership will step in**
- The school system has a building in Langlois (19 acre campus-Laboratory, offices, gym). It has been vacant for 5 years. Its in good shape.
- **Local labor force is lacking - skills are needed, i.e. hospitality industry, licensed pharmacists**
- **Service industries need to grow - journeyman, vocational skills, licensed and do-it-yourself**
- **Training is needed due to technologies**
- Alternative approaches such as trade programs will help
 - **Journey interns**
 - **Apprenticeships**
 - **Cottage industry trades**
 - **Production art**
 - **Industrial engineering**

- Early childhood educational training
- Health care training
- Greater interconnections with research libraries and cultural center libraries
- Partner more with OSU extension
 - Currently Master Gardener Program
- Workshops could be brought that would draw others - visitors, etc.
- Host continuing education - workshops/seminars
- Unique aspects
 - Scenery, geology, wildlife, marine research opportunities, Native American studies, Coast Guard and lighthouse history
- Artists community
- Ranching is not visible from the highway (OSU), but present in community
 - Sheep
 - Cattle
- We are not transitioning from forest to farming
 - We are protecting streams, etc.
 - Watershed Council had a monthly course regarding ecology and it was well attended (Harry Hoogeesteger) Young people could get credit
- Surfing opportunities are unique (Flores Lake, Port Orford Reef Scuba Diving, Kiteboarding at Flores Lake)
- Pistol River had a national gathering of windsurfers
- Research opportunities - past program in architecture - State Architects studied and taught about this at the Heads and the Hughes House which was used for National Register Designation
- Birding - we are on major bird migration route Local Kalmiopsis Audobon Birding group

- Whale migrations could be studied/through organized programs
- Educational system needs to be a leader in bringing internet and technology - look to Eastern Oregon (Port Orford had tried to accomplish this many times). ESD does this for the high school and library
- We need community infrastructure (businesses) if people are to come
- Partner with motels to create infrastructure for corporate retreats
- Creative approach = What is convenient for people - weekend workshops etc.
- We are an urban "retreat" because of our green environment
- We are lacking business location sites
- Attract people as a start
- Higher education is in the Willamette Valley and SOCC has a large area and large responsibility to the southwestern part of the State.
- Constituents feel forgotten
- High speed is coming here soon and we could use opportunities to connect with it at reduced rates for students
- Work force training and development is key
- Partner with OSU and U of O to extend SOCC clout and internet base
- Partner with National Stakeholders who have local interest

Curry County Student Focus Group Dialogue Summary

Facility Planning and Grouping Activity:

(Participants were asked to write down their top 3 “needs” for the new facility. They wrote each item on a 5x7 card and then posted them on the front board. As themes developed, items were grouped together. This is a synthesis of those groupings.)

- Architecture that enhances learning
 - 1 room for each class
 - Sinks in each classroom
 - Storage in each classroom
 - Natural lighting
 - Student Center – lounge and study area
 - Pleasant working environment
 - Large classrooms
 - Student Success Center
 - Handicap friendly
 - Warm learning areas
 - Drawing and Art Room
 - Student Lounge
 - Resource center
 - Outdoor study area
 - Walking trails
 - Pleasant surroundings
 - Flexibility
 - Ability to meet future needs
 - Science labs
 - Chemistry labs
 - Nursing classroom
- Excellent Academic Staff
 - More faculty members
 - Tutors and mentors for all students
 - Tutoring Center
 - Learning Center
 - Lifelong learning emphasized
- Programming
 - Art programs
 - Nursing
 - Career related programming
 - Library
 - Lifelong learning
 - Career Center
 - Job training interfaces with employers

- Business resource center
- Hands on training
- Science program
- Animal class
- Senior Programming
- Service sector programming
- Community gathering and events area
- Forestry
- Focused subject areas

- Technology
 - Laptops available
 - Wireless access
 - State-of-the-art computer labs
 - Science labs

- Health and Fitness
 - Walking trails
 - Healthy food options
 - Exercise room
 - Large Gym
 - Food Court
 - Racquetball court
 - Dance area
 - Exercise area
 - Multipurpose room for sports and activities
 - Recreation facility
 - Bike paths
 - Walking track
 - Cafeteria

- Partnerships
 - K-12
 - OUS
 - Local business
 - Networking hub for community
 - Business center

- Transportation
 - Bike path to town
 - Transportation system

- Child Care (5 cards)