



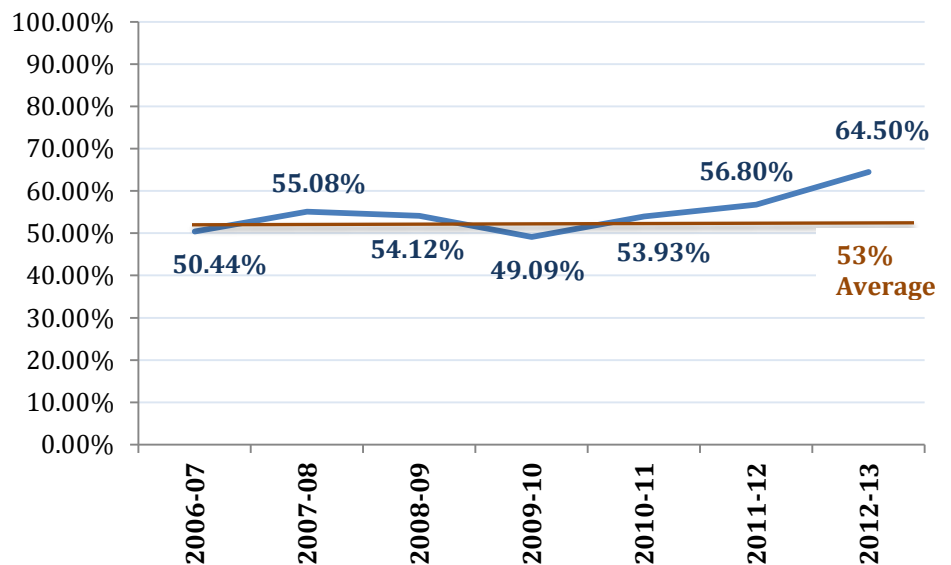
# Course Achievement Brief Math 94 – Fall 2012 and Winter 2013



## STUDENT SUCCESS

Students who enrolled in Math 94 courses at Southwestern successfully passed their courses at a rate over 64% during fall 2012 and winter 2013. This represents an increase over the six-year average of approximately 11% and an increase of approximately 7% over the prior year. The six-year average course completion rate for Math 94 from 2006-07 through 2011-12 was 53% with a low of 49% in 2009-10 and a high of nearly 57% in 2011-12. Just over 49% of students earned grades of A or B in winter 2013 compared to approximately 39% during fall 2012. Grade distribution information is illustrated on the reverse side of this brief.

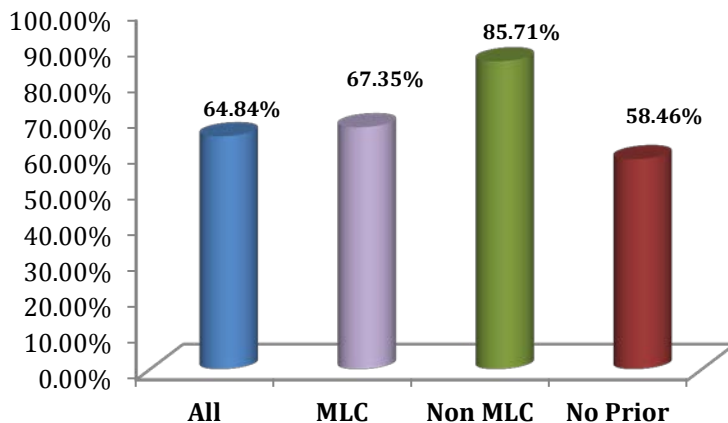
### Success Rate: Math 94



## SUCCESS GAPS

Students who enrolled directly into the Math 94 course during Winter 2013, either tested into the course or had not taken a math course the prior term, passed their courses just over 58% of the time. This is more than 6% lower than students who participated in the math learning center (MLC) or took courses in Curry or online (Non MLC). Nearly all students who enroll in Math 20 or Math 70 now participate in the math learning center and subsequent course success in Math 94 has increased significantly from prior years.

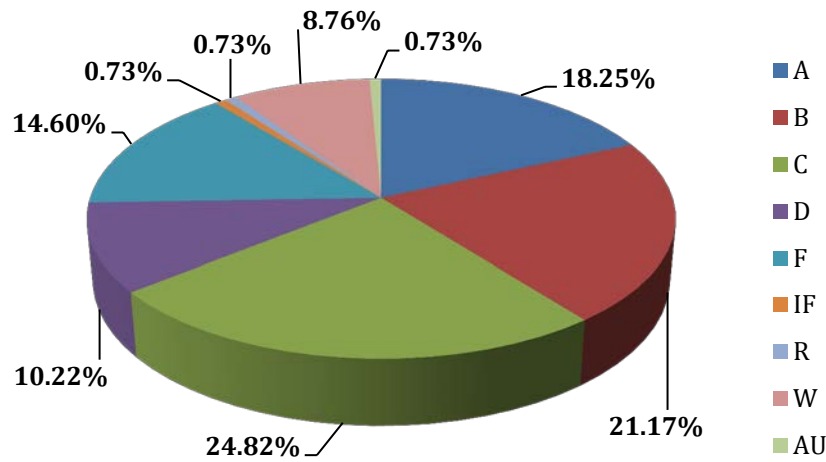
### Success Rate: Math 94 Winter 2013



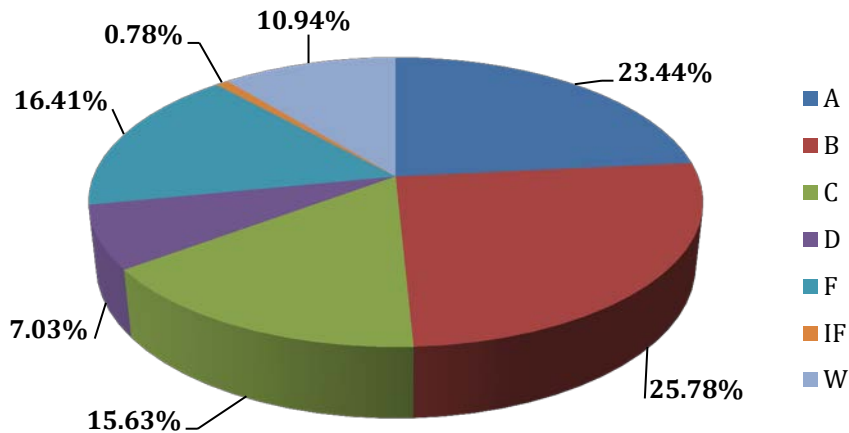
Planned changes to the math learning center include student note taking strategies and additional student lecture support. Student surveys are planned for next year to evaluate the

learning environment. The Math Department is assessing the remedial pathway to reduce the number of courses students have to take prior to enrolling in a gateway math course appropriate for the type of degree the students is seeking.

## Math 94: Fall 2012



## Math 94: Winter 2013



**ABOUT THIS DATA:** Grade distributions for the Math 94 courses were analyzed and categorized by previous course enrollment type: (a) math learning center (MLC), (b) no math learning center (Non MLC), and (c) no prior math in the previous term. Successful course completion is defined as the percentage of A, B, and C grades received by

students. Students who were issued an “R”, changed to an audit (AU), or withdrew (W) are considered unsuccessful for this analysis.

**DATA SOURCE:** OCCURS data as extracted from the Jenzabar system. OCCURS is the official Oregon state reporting dataset.