



THE ECONOMIC CONTRIBUTION OF SOUTHWESTERN OREGON COMMUNITY COLLEGE

*An Analysis of Investment Effectiveness
And Economic Growth*

Volume 1: Main Report

State of Oregon

June 22, 2006

M. Henry Robison and Kjell A. Christophersen

CCbenefits Inc.
www.ccbenefits.com

1150 Alturas Drive, Suite 102
Moscow, ID 83843
Phone: (208) 882-3567
Fax: (208) 882-3317
E-mail: ccbenefits@moscow.com
Website: www.ccbenefits.com

Table of Contents

ACKNOWLEDGMENTS	v
ACRONYMS	vi
PREFACE	vii
CONCLUSIONS	1
Investment Results	1
Economic Growth Results	1
Chapter 1 INTRODUCTION	3
Overview	3
Background	4
Methods	5
Annual Private and Public Benefits	5
Present Values of Future Benefits	6
Economic Growth Effects	7
Chapter 2 DATA SOURCES AND ASSUMPTIONS	8
Introduction	8
College Profile.....	8
<i>Faculty, Staff, and Operating Budget</i>	8
<i>The Students</i>	9
<i>Entry-Level Education, Gender, and Ethnicity</i>	11
<i>The Achievements</i>	12
Gross Private Benefits (Increased Earnings).....	14
Gross Annual Public Benefits	15
<i>Adjustment Factors</i>	16
<i>Higher Incomes</i>	17
<i>Health Savings</i>	17
<i>Crime Reduction Benefits</i>	19
<i>Welfare and Unemployment Reduction Benefits</i>	20
Costs	21
<i>Opportunity Cost of Time</i>	21
<i>The Budget</i>	23
Other Assumptions	24
Regional Economic Growth and Development Benefits.....	25
<i>The Impact of Southwestern Operations</i>	26
<i>Estimating CHEs Embodied in the Present-Day Workforce</i>	27

From Embodied CHEs to Direct Regional Income Effects 29

The Industries Where Past Students Work..... 30

The Indirect Economic Development Effects of Students 32

Summary 33

Chapter 3 INVESTMENT ANALYSIS – BENEFITS AND COSTS FROM A SINGLE YEAR’S OPERATIONS **34**

Introduction 34

Annual Benefits 34

Higher Student Earnings..... 34

Economic Growth Benefits..... 35

Social Savings 36

 Health-Related Savings 36

 Crime-Related Savings 36

 Welfare and Unemployment Savings 37

 Total Social Savings 37

Annual Benefits Per CHE and Per Full-Time Student..... 37

Who Benefits Most from Education? 38

The Investment Analysis: Incorporating Future Benefits 39

Accounting Stance and Key Definitions..... 40

The Present Value of Future Benefits and Costs..... 42

 Student Benefits..... 42

 Broad Taxpayer Perspective 43

 Narrow Taxpayer Perspective..... 44

Summary of Investment Analysis Results..... 46

 Investment Rate of Return 46

 Payback Period 48

With and Without Social Benefits 48

Conclusions 49

Chapter 4 THE EFFECT OF SOUTHWESTERN ON REGIONAL ECONOMIC GROWTH.... **50**

Introduction 50

The Effect of Southwestern Operations..... 50

The Human Capital Effect of Southwestern 51

Direct Effect 51

Indirect Effect..... 52

Total Effect..... 52

Summary of Specific Economic Growth Results 52

Southwestern Spending Effects..... 52

The Human Capital Effect 54

Chapter 5 SENSITIVITY ANALYSIS OF KEY VARIABLES **55**

Introduction 55

The Student Employment Variables 55
Percent of Students Employed 56
Percent of Earnings Relative to Full Earnings 56
Results..... 56

Regional Economic Development 57
The Economic Impact of Student Spending 58
Economic Impacts Reported as Gross Sales 59

Variables Requiring “Judgment” 61
Alternative Education Opportunity 62
Attrition Variable 63

RESOURCES AND REFERENCES 64

APPENDIX 1: GLOSSARY OF TERMS 73

APPENDIX 2: ADJUSTING FOR THE BENEFITS AVAILABLE ABSENT STATE AND LOCAL GOVERNMENT SUPPORT 77
 Introduction 77
 State and Local Government Support Versus Tuition 77
 From Enrollment to Benefits 79
 The College Shutdown Point 79
 Adjusting for Alternative Education Opportunities..... 81

APPENDIX 3: ESTIMATING THE ALTERNATIVE EDUCATION OPPORTUNITY 83
 Introduction 83
 Alternative Education Variable in Functional Form 83
 Independent Variables..... 84
 Example of Analysis and Results 84

APPENDIX 4: EXPLAINING THE RESULTS – A PRIMER..... 86
 The Net Present Value (NPV) 87
 The Internal Rate of Return (IRR) 88
 The Benefit/Cost Ratio (B/C)..... 89
 The Payback Period..... 90

APPENDIX 5: OVERVIEW OF THE INPUT/OUTPUT MODEL 91
 Overview 91
 Reducing Multiplier Impacts 91

APPENDIX 6: EXPLANATION OF VARIANCES IN RESULTS 93
 Introduction 93

Data Updates in the Ccbenefits, Inc. Socioeconomic Impact Model 93
 Income and Earnings Data 93
 State and Local Tax Data 94
 Social Variables 94

Improved Methodology and Application of New Theory 94
 CHE Engine 94
 Alternative Education Opportunity 94

Revised Data from Southwestern 95
 College Revenues 95
 College Expenditures 95
 Student Achievements 96

ACKNOWLEDGMENTS

The successful completion of this case study is largely due to excellent support from the institutional research staff of Southwestern Oregon Community College. We would like to express our appreciation to Dr. Judith M. L. Hansen, President, who approved the study, and to Mr. Joe Colo, Business Manager, and Ms. Kat Flores, Director of Information Technology, who collected and organized much of the data we requested. In addition, Joshua Berning, Annike Christophersen and Deacon James of our own staff contributed invaluable modeling and data collection expertise throughout the study period. Any errors in the report are the responsibility of the authors and not of any of the above-mentioned institutions or individuals.

Dr. M. Henry Robison, Co-Principal
Dr. Kjell A. Christophersen, Co-Principal
CCbenefits, Inc.

CCbenefits, Inc. is a company created in collaboration with the Association of Community College Trustees (ACCT) to provide economic analysis services to two-year technical and community colleges. Questions of a technical nature concerning the approach, assumptions, and/or results should be directed to CCbenefits, Inc., c/o Drs. Kjell Christophersen and Hank Robison, 1150 Alturas Dr., Suite 102, Moscow, ID 83843, phone: 208-882-3567, fax: 208-882-3317, e-mail: ccbenefits@moscow.com.

ACRONYMS

ABE	Adult Basic Education
ACCT	Association of Community College Trustees
B/C	Benefit/Cost Ratio
CHE	Credit Hour Equivalent
ESL	English as a Second Language
GED	General Equivalency Diploma (also Education Development Certificate)
HS	High School
IO	Input-Output Analysis
NCF	Net Cash Flow
NPV	Net Present Value
REIS	Regional Economic Information System
RR	Rate of Return

PREFACE

The CCbenefits SEIM model left the development stage late in 2000 after passing peer review and field tests with 8 “pilot schools.” With a product such as this, however, peer and other reviews never stop. We have now applied the SEIM to roughly 500 colleges in the U.S. and Canada, and along the way routinely received valuable insights, questions and suggestions from institutional researchers, financial officers and others. As a result of these, relatively minor revisions are more or less continuous.

With the release of the present version of the SEIM and accompanying reports, a somewhat more dramatic set of revisions are introduced. Most of these are stylistic. For example, the chapters are restructured, and much of the text is streamlined for easier reading. Other changes add new features and therefore value to the reports, including the following:

- Data updates in the SEIM model, specifically to the earnings and income data, state and local tax information, and the social variables;
- The inclusion of the value of leisure time in the student opportunity cost of time;
- The internalization of the alternative education variable;
- The application of out-of-state attrition variables to the investment analysis;
- The addition of the “Who Benefits the Most” piece in **Chapter 3** of this report.

At least two changes not listed above reflect more significant analytic improvements. The first of these changes reflects our approach to deriving regional economic growth from changes in student earnings. Our original version relied on an international education and economic growth literature. However, additional review and research, including comments from peer reviewers, convinced us that our approach was predictably underestimating the actual economic growth effect of community and technical college education. Accordingly, we replaced our earlier international growth literature approach with one based on neo-classical production theory.

A second adjustment has to do with our estimation of community college operations and spending effects. As observed by several reviewers, these effects might overstate the actual community college economic impact because at least some of the monies that fund colleges come from within the impact region, and thus are withdrawn from the

economy. Our new approach estimates this withdrawal effect, and subtracts it from the positive college operations and expenditure effects.

We thus have two major changes in the estimation of college economic impacts. First, in the way we estimate economic growth resulting from higher student earnings, and, secondly, in the way we estimate the impact of college operations and spending. The first of these changes increased the overall impact of the college, while the second decreased it. All in all, we feel that these changes have not only substantially strengthened the theoretical underpinnings of the analysis, but they have also increased the accuracy and transparency of the study as a whole.

CONCLUSIONS

This report presents the economic impacts generated by Southwestern Oregon Community College both in its service region and in the state. The study presents two major analyses: 1) investment analyses from the perspectives of the students and the taxpayers, and 2) economic growth analysis to determine the relative contribution of Southwestern to regional labor and non-labor income. The major findings are as follows:

INVESTMENT RESULTS

1. **Students:** The analysis recognizes Southwestern Oregon Community College as a wise investment on the part of students. Compared to their counterpart with only a high school diploma, the typical Southwestern graduate (Associate Degree) will see an increase in annual earnings of \$8,500 (rounded), or approximately \$276,700 over the course of a working lifetime. This figure does not capture a host of other well-documented personal incidental benefits from education, including increased job satisfaction, improved health, and others.
2. **Taxpayers:** The analysis considers Southwestern as an investment on the part of state and local government taxpayers. Taxpayers bear roughly 44% of all college costs, and it is important to know what benefits they receive in return for their investment. The analysis translates the economic growth effect of Southwestern into increased state and local government revenues (via increased tax receipts). Added to these is an assortment of social savings, e.g., avoided costs stemming from reductions in incarceration, welfare, health care support, and others. Altogether, state and local government support of Southwestern yields an investor rate of return equal to 19%, well above the 4% opportunity cost of funds. The bottom line: Southwestern returns more to taxpayers than it costs. The college not only pays for itself, but it also provides a surplus that helps support other government programs.

ECONOMIC GROWTH RESULTS

The macro-economic effects of Southwestern Oregon Community College are measured using conservative assumptions in this study. Unlike many impact studies, we discount the impacts stemming solely from college operations by the estimated portion of funding that comes from within the college service region. This is in recognition of the fact that monies devoted to funding colleges are diverted from other uses – what the

economy gains on one hand, it gives up on the other. In the case of Southwestern, for example, the college receives about 45% of its funding from local sources. These are monies that would have been spent in the region anyway and are not attributable to the actions of Southwestern. We thus discount the total impact of college operations accordingly. Given these adjustments, it is estimated that Southwestern operations explain roughly \$13.0 million in regional labor and non-labor income in the Southwestern Service Area economy.

By far the greatest impact of Southwestern relates to workforce development, i.e., as newly skilled college-trained workers deepen the state and local economy's human capital. The result is not just higher wages for students, but greater returns to other factors of production as well. There is increased investment and greater returns to property owners, increased tax revenues, and a host of increased labor and non-labor incomes stemming from a collection of additional economy-wide multiplier effects. The analysis of Southwestern indicates that the past students annually contribute about \$199.1 million to economic growth in the Southwestern Service Area.

In sum, Southwestern operations and past student productivity effects account for approximately \$212.1 million of labor and non-labor income in the Southwestern Service Area - this figure amounts to roughly 12.6% of a typical year's regional income. Clearly it is not inaccurate to describe Southwestern as an engine of economic growth.

Chapter 1

INTRODUCTION

OVERVIEW

Southwestern generates a wide array of benefits. Students benefit directly from higher personal earnings, and society at large benefits indirectly from cost savings (avoided costs) associated with reduced welfare and unemployment, improved health, and reduced crime. Higher education, however, requires a substantial investment on the parts of the students and the taxpayers. Therefore, all education stakeholders—taxpayers, legislators, employers, and students—want to know if they are getting their money's worth. In this study, Southwestern Oregon Community College investigates the attractiveness of its returns relative to alternative public investments. The benefits are presented in three ways: 1) annual benefits, 2) present values of future annual benefits (rates of return and benefit/cost ratios, etc.), and 3) regional economic benefits, including local job and income formation and returns to the business community.

The report has five chapters and six appendices. **Chapter 1** is an overview of the benefits measured and the analytical approach. **Chapter 2** presents underlying data, mainly collected from Southwestern, and details on the major assumptions underlying the analysis. **Chapter 3** presents the results of the investment analysis—the returns to students and the taxpayers. In **Chapter 4** we consider the impact of Southwestern on economic growth in both the region and the state. Finally, **Chapter 5** provides sensitivity analyses of some of the softer variables used in the study. **Appendix 1** is a simple glossary of terms. **Appendix 2** provides a detailed technical/theoretical explanation of how benefits must be adjusted if the college can still stay open absent state and local government support. **Appendix 3** demonstrates the methods used to determine the alternative education variable—the extent to which the results are affected by the availability of alternative education opportunities. **Appendix 4** is a short primer on the context and meaning of the investment analysis results—the net present values (NPV), rates of return (RR), benefit/cost ratios (B/C), and the payback period. **Appendix 5** provides the details on the input/output model used in generating the regional impact results. **Appendix 6** explains the variances in the results between the present study and the one that was previously conducted for Southwestern in 2002.

BACKGROUND

The Association of College Trustees (ACCT) contracted with the authors in 1999 to create the model used in this study. The original vision was simple – to make available to community and technical colleges a generic and low cost yet comprehensive and academically defensible tool they could use to estimate the economic benefits generated by their institutions. It makes economic sense for the students to attend college only if their future earnings increase beyond their present investments of time and money. Likewise, taxpayers will only agree to fund colleges at the current levels or increase funding if it is demonstrated that the economic benefits gained from the education exceed the costs.

In response to ACCT's charge, CCbenefits developed the Socioeconomic Impact (SEIM) model, and in turn used the model to generate more than 500 community college socioeconomic impact studies to date. The studies aim to bring to the attention of education stakeholders the economic roles played by community and technical colleges. The model addresses the fundamental student question: Will the students be better off attending college or should they just forego additional education and stay employed where they are? And it addresses the fundamental taxpayer question: Should taxpayers continue with their investment in the college at current levels, or is it in their economic interest to increase or decrease the funding? Along the way, the model addresses the regional economic effects of the college: To what extent does the college increase local and state income, and which sectors of the economy benefit the most?

Studies that aim to measure the economic impact of community colleges are not new. Most studies, however, cover a rather narrow scope, confining their analyses to the computation of the simple multiplier effects stemming from the annual operation expenditures of the colleges. While multiplier effects are also a part of the CCbenefits model, they are only a relatively small part. The CCbenefits model also accounts for the economic impacts generated by the workforce effects of community college training, the future economic growth effects, and the effects of past students who are still active in the present day workforce. The CCbenefits model also accounts for a number of external social benefits, such as reduced crime, improved health, and reduced welfare and unemployment. These translate into avoided costs to the taxpayers, and, therefore, affect their decision to invest in the college.

A final note: Although the written reports generated for Southwestern are similar in text to the reports prepared for other colleges, the results differ widely. **These differences,**

however, do not necessarily indicate that some colleges are doing a better job than others. Differences among colleges are a reflection of the student profiles, particularly whether or not the students are able to maintain their jobs while attending, and the extent to which state and local taxpayers fund the colleges. Therefore, if the average student rate of return for College A is 15%, and that of College B is 20%, that does not necessarily mean that B is doing a better job than A. Rather, it may simply be attributable to the employment opportunities in the region, or that one college may enroll more women than men, or more minorities, and/or different kinds of students such as transfer or workforce. In turn, the student body profiles are associated with their own distinct earnings functions reflecting these employment, gender and ethnicity differences. The location of the college, therefore, dictates the student body profile, which, to a large extent, translates into the magnitudes of the results. Thus, College A with a 15% student rate of return may actually be a better or more efficiently managed school than College B with a 20% student rate of return. Any difference in management efficiency is not equal to the difference between the two returns.

METHODS

To date, CCbenefits has applied the SEIM model to roughly 450 individual colleges in the United States, and another 50 or so colleges in Canada. A college begins the process by assembling data in an electronic form we refer to as the “Starter Kit.” These data include information on student body characteristics, such as student headcounts, average coursework hours, the age, gender and ethnicity of students, the number of students who work while attending school, their level of education upon entering the college, their achievements during the analysis year, and so on. Also included is spending information, e.g., salaries paid, supplies purchased, whether the supplies are purchased locally or non-locally, and so on. Typically it requires a college three to five person-days of time to supply the data needed for the economic model. CCbenefits blends these individual college data with a myriad of other published economic, social and educational data. Some of these are national, some state, and some county-level. The resulting studies present information specific to the college under analysis.

ANNUAL PRIVATE AND PUBLIC BENEFITS

Private benefits are the higher earnings captured by the students; these are well-known and well-documented in economics literature (see for example Becker, 1964 and Mincer 1958, plus many others listed in the references at the end of this report). Less well-

known and documented are the indirect benefits, or what economists call *positive externalities*, which are a collection of public benefits captured by society at large, such as improved health and lifestyle habits, lower crime, and lower incidences of welfare and unemployment. These stem from savings to society as taxpayer-provided services are reduced. We estimate dollar savings (or avoided costs) from reduced arrest, prosecution, jail, and reform expenditures based on published crime statistics arranged by education levels. Likewise, statistics that relate unemployment, welfare, and health habits to education levels are used to measure other savings. The annual economic impacts are presented in three ways: 1) in the aggregate (covering the entire student body), 2) per credit-hour equivalent (CHE), defined as a combination of credit and non-credit attendance,¹ and 3) per full-time equivalent student.

PRESENT VALUES OF FUTURE BENEFITS

The annual impacts continue and accrue into the future and are quantified and counted as part of the economic return of investing in education. This lifetime perspective is summarized as *present values* – a standard approach of projecting benefits into the future and discounting them back to the present. The approach allows us to express the benefits occurring incrementally (every year) in the future in present value terms so that they can be compared with the costs incurred in the present. The present value analysis determines the economic feasibility of investing in college education, i.e., whether the present value of future benefits outweigh the costs. The time horizon over which future benefits are measured is the retirement age (65) less the average age of the students weighted by their total achievements (CHEs).²

The present values are also expressed in four ways: 1) net present value (NPV) total and per CHE, 2) rate of return (RR) where the results are expressed as a percent return on investment, 3) benefit/cost (B/C) ratio – the returns per dollar expended, and 4) the payback period – the number of years needed to fully recover the investments made (see **Appendices 1** and **4** for a more detailed explanation of the meaning of these terms).

¹Instruction hours are not the same as credit hours. Colleges prepare people both for jobs and for degrees. Many attend for short periods and then leave to accept jobs without graduating. Others simply enroll in non-academic programs. Nonetheless, the CHEs earned will positively impact the students' lifetime earnings and social behavior.

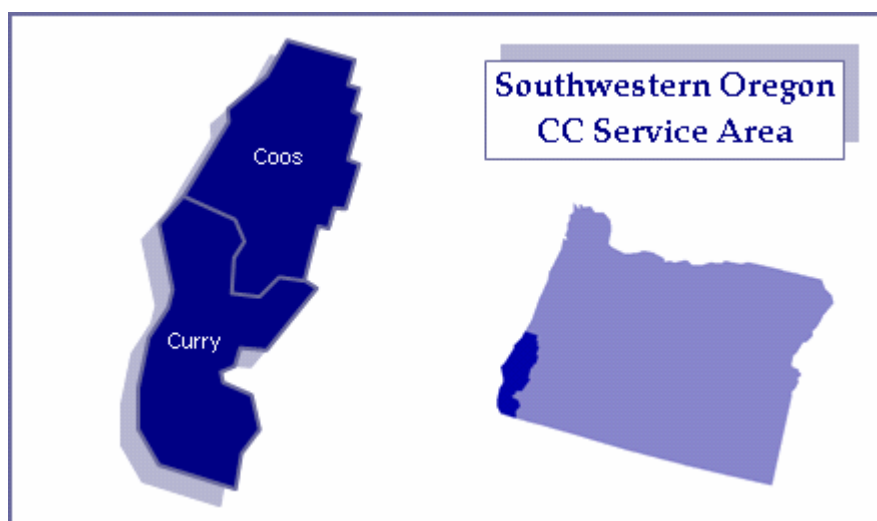
²Retirement at age 65 is only our assumption. In some areas people retire earlier, in others later. Whether they retire at 62, 65, or 67, this will not change the magnitudes of the results by much. The assumption only affects the time horizon over which the analysis is conducted.

ECONOMIC GROWTH EFFECTS

The benefits of a robust economy are many: jobs, increased business revenues, greater availability of public investment funds, and eased tax burdens. The educational activities of Southwestern benefit local businesses directly by raising the skill level of the labor force. Trained employees are associated with a broad range of regional economic externalities, including, in particular, a positive, well-recognized yet hard-to-track impact on new invention and innovation. Individual businesses benefit from increased efficiency and enhanced competitiveness. At the regional level, agglomeration and economic spread and linkage effects add still more to the positive economic impact generated by the education produced by Southwestern.

In this study we show the impact of Southwestern as a creator of income in the state and local economy. Increased earnings are displayed by industrial sector (for the purposes of this report, we employ the major divisions of the North American Industry Classification System [NAICS], which includes all industrial and service sectors). The role that Southwestern plays in the state and local economy is then indicated by the percentage of sector-by-sector income explained by the college. In general, these college-linked incomes fall under two categories: 1) income generated by the annual operating and capital expenditures of the colleges; and, 2) income attributable to the Southwestern skills embodied in the workforce.

The Southwestern Service Area is shown in the map below. The whole counties included in the economic region comprise the backdrop for the calculation of the economic impacts presented in this report.



Chapter 2

DATA SOURCES AND ASSUMPTIONS

INTRODUCTION

To the extent possible, documented statistics obtained from several databases and from the college were used to craft the assumptions on which the results are based. In the cases where hard data were not available, the college institutional researchers on the scene applied well-informed judgments and estimations on the basis of their intimate knowledge of the college and student body.

This chapter contains six sections documenting our data sources and assumptions: 1) college profile; 2) gross private benefits by education levels; 3) the social benefit assumptions (health, crime, and welfare/unemployment); 4) education costs; 5) other assumptions (the discount rate used, health, crime, and welfare cost statistics, etc.); and 6) assumptions pertaining to regional economic effects.

COLLEGE PROFILE

Faculty, Staff, and Operating Budget

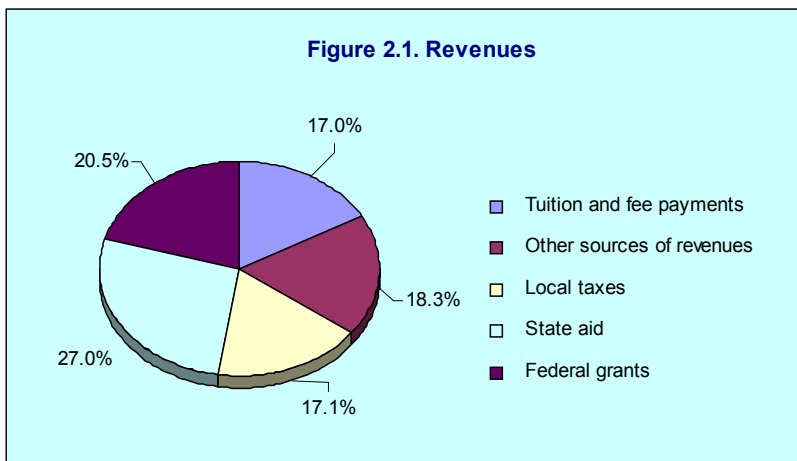
Southwestern employed 235 full and 199 part-time faculty and staff in fiscal year 2005. Their combined payroll amounted to a total of some \$14.0 million (see **Table 2.11** below).

Table 2.1 shows Southwestern's annual revenues by funding source: combined annual revenue, capital and auxiliary budgets of roughly \$24.9 million. Two main revenue sources – private and public – are indicated. Private sources include tuition and fees (17.0%) plus 18.3% from other private sources (such as contract revenues, interest payments and the like). Public funding is comprised of local taxes (17.1%), state aid (27.0%), and federal grants (20.5%). These budget data are critical in identifying the annual costs of educating the college student body from the perspectives of the students and the taxpayers alike. The same information is displayed in **Figure 2.1** in the form of a pie chart.

Table 2.1. Aggregate Revenues

Sources	Revenues	Total	% of Total
Private Funding			
Tuition and fee payments	\$4,235,480		17.0%
Other sources of revenues	\$4,564,449	\$8,799,929	18.3%
Public Funding			
Local taxes	\$4,260,721		17.1%
State aid	\$6,734,370		27.0%
Federal grants	\$5,111,548	\$16,106,639	20.5%
Total		\$24,906,568	100%

Source: Data supplied by Southwestern. Note that the tuition and fee revenue is inclusive of student loans, since these are considered a cost to the student.



The Students

Students attend community and technical colleges for different reasons: to prepare for transfer to four-year institutions, to obtain Associate Degrees or Certificates in professional/technical programs, to obtain basic skills, or perhaps to take refresher courses or participate in non-credit programs. Students also leave for various reasons – they may have achieved their educational goals or decided to interrupt their college career to work full-time. **Tables 2.2** through **2.4** summarize the student body profile. The Southwestern unduplicated student body headcount is 11,509 (fiscal 2005 enrollment). This total consists of both credit and non-credit students.

Also shown in **Table 2.2** are the student employment patterns. Some students forego earnings entirely while attending college, while others may hold full- or part-time jobs. Information about student employment plays a role in determining the *opportunity cost* of education incurred by the students while attending Southwestern.³ In **Table 2.2**, the rows labeled “Students employed while attending college (%)” and “Full-time earning

³ The opportunity cost is the measure of the earnings foregone, i.e., the earnings the individual would have collected had he or she been working instead of attending Southwestern.

potential (%)” provide the percentage estimates of the students who held jobs (56%) while attending Southwestern, and how much they earned (64%) relative to full-time employment (or what they would statistically be earning if they did not attend Southwestern). The former is a simple percent estimate of the portion of the student body working full- or part-time. The latter is a more complex estimate of their earnings relative to their earning power if they did not attend college.⁴

Table 2.2. Student Body Profile

		Values
Total headcount of unduplicated credit students		3,700
Total headcount of unduplicated non-credit students		7,809
Total unduplicated enrollment, all campuses		11,509
Enrollment on campus for which analysis is carried out	100%	11,509
Students employed while attending college (%)		56%
Full-time earning potential (%)*		64%
Students remaining in local community after leaving college		80%
Thirty-year attrition rate (leaving local community)**		33%
"Settling In" factors (years):		
Completing Associate Degree		2.0
Completing Certificate		0.5
Non-completing transfer track		2.5
Non-completing workforce		0.0
ABE/ESL/GED		0.5

*Note: This is calculated through the application of regression analyses based on estimates provided by some 200 colleges analyzed to date.

**Note: This assumption is internal to the analytical model.

Sources: Student headcount and employment variables supplied by the college. Settling-in factors adapted from Norton Grubb, 'The Economic Benefits of Sub-Baccalaureate Education,' CCRC Brief No. 2, ISSN 1526-2049 (New York, NY: Community College Research Center, June 1999).

As indicated in the table, it is estimated that 80% of the students remain in the local community and thereby generate local community benefits. The remaining 20% leave the community and are not counted as contributing to regional economic development. The 80% local retention rate applies only to the first year, however. The analytical model also assumes that 33% of the students, and thus associated benefits, will leave the area over the next thirty years due to attrition (e.g., retirement, out-migration, or death).

⁴For example, students might make \$20 an hour working full-time in a factory, yet only \$10 an hour in a service sector job that accommodates their school attendance. Thus their annual earnings while attending college fall short of what they would *potentially* be earning had they chosen to work full-time. These “lost” earnings are precisely what the earnings variables aim to capture. In the model, full-time earnings foregone reflect the age, gender and ethnicity of the Southwestern student body, all localized to reflect wages prevailing in the Southwestern Service Area. Additional detail on these earnings and their derivation appear in the text accompanying **Table 2.5** and **Table 2.9** below.

The last five items in **Table 2.2** are *settling-in* factors – the time needed by students to settle into the careers that will characterize their working lives. These factors are adapted from Norton Grubb (see table references). Settling-in factors have the effect of delaying the onset of the benefits to the students and to society at large. Thus, we assume that for transfer track students, the earnings benefits will be delayed for at least 2.5 years to account for the time spent subsequently at four-year colleges.

Entry-Level Education, Gender, and Ethnicity

Table 2.3 and **Figure 2.2** show the education level, gender, and ethnicity of the student body. This breakdown is used only to add precision to the analysis, not for purposes of comparing between different groups.⁵ Five education entry levels are indicated in approximate one-year increments, ranging from less than High School to post Associate Degree. These provide the platform upon which the economic benefits are computed.

The *entry level* characterizes the education level of the students when they first enter the college; this is consistent with the way most colleges keep their records. The analysis in this report, however, is based on the educational achievements of the students during the current year. As not all students reported in the enrollment figures for the fiscal year are in their first year of college, an adjustment was made to account for students who had accumulated credits during their college experience and moved up from the “<HS/GED” category. For this reason, the education levels of the student body must also be estimated for the beginning of the analysis year. Thus, of the 3,562 white males who first entered with a high school diploma or GED, it is estimated that only 1,014 still remain in that category at the beginning of the analysis year, meaning that 2,547 students have actually moved up from the “HS/GED equivalent” category to the “One year post HS or less” category or beyond since they first entered Southwestern.⁶

Note that the “Entry Level” and “Begin Year” columns always add to the same total. Differences between the two columns reflect a redistribution of students from entry level to where they are estimated to be at the beginning of the analysis year. The assumptions underlying the process of redistributing the students from the “Entry Level” to “Begin

⁵ In this volume we present the gender and ethnicity breakdown only in **Table 2.3**. Otherwise, the breakdown is presented as weighted averages for the remainder of the report. Please refer to the separate companion volume, **Volume 2: Detailed Results**, to see the breakdown by gender, ethnicity and level of education.

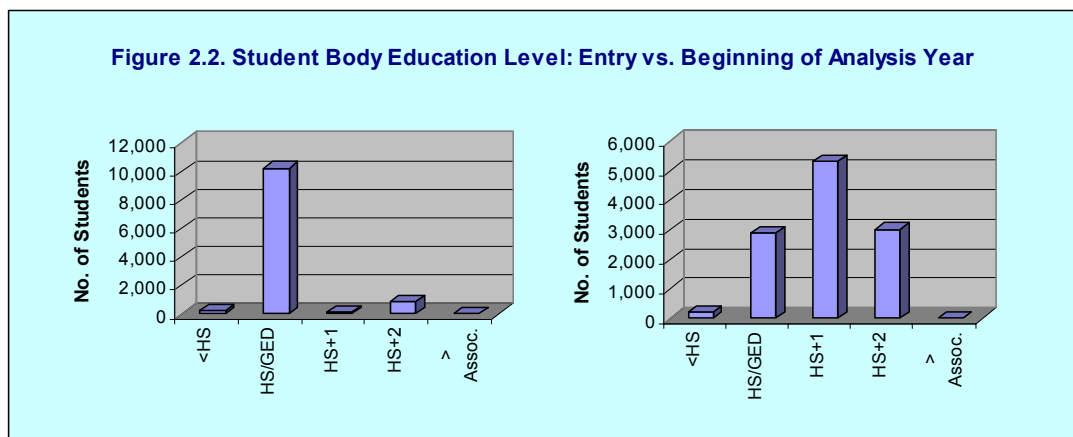
⁶ These calculations are based on parameters (such as the frequency of “stopouts”) that characterize how typical college students progress over time in their college career from when they first started up to the analysis year.

Year” columns are internal to the economic model – they are designed to capture the dynamics of the educational progress as the students move up the educational ladder beyond their entry level.

Table 2.3. Student Body Education Level: Entry vs. Beginning of Analysis Year

Education Level	White Male		Minority Male		White Female		Minority Female		Total	
	Entry Level	Begin Year	Entry Level	Begin Year	Entry Level	Begin Year	Entry Level	Begin Year	Entry Level	Begin Year
< HS/GED	123	93	21	15	112	84	16	12	272	204
HS/GED equivalent	3,562	1,014	443	126	5,756	1,638	486	139	10,246	2,917
One year post HS or less	23	1,853	5	232	59	2,988	5	253	91	5,326
Two years post HS or less	292	1,040	11	106	539	1,756	23	126	865	3,028
> Associate Degree	14	14	0	0	18	18	2	2	34	34
Total	4,014	4,014	479	479	6,484	6,484	532	532	11,509	11,509

Source: Southwestern provided data on the breakdown of the student body by gender, ethnicity and level of education (e.g., less than HS, HS/GED equivalent, some college, etc.). These data are broken down into the five education levels shown in Table 2.3 based on parameters internal to the analytical model.



The Achievements

Table 2.4, along with Figures 2.3 and 2.4, shows the student breakdown in terms of analysis year academic pursuits and/or achievements, allocated according to seven basic categories: 1) retired and/or leisure students, 2) Associate Degree completers, 3) Certificate completers, 4) transfer students and/or degree non-completers, 5) workforce students, 6) ABE/ESL/GED students, and finally, 7) all other students.

As indicated in the table, students who achieved their graduation goals during the analysis year would be those completing Associate Degrees (1.2%) or Certificates (0.1%). Transfer students and/or degree-bound students who did not complete during the analysis year comprised 21.5% of the student body. Other students completed college credits to improve their skills or to fulfill their educational needs (34.3% + 23.5% = 57.8% in the workforce and all other student categories, respectively).

Retired students (15.2%) are simply backed out of the analysis altogether on the assumption that they do not attend Southwestern to acquire skills that will increase their earnings. ABE/ESL/GED students (4.2%) are assumed to have a lower percentage impact than other students, because the end product of their education is to arrive at the “starting gate” on an equal basis with others.⁷

The fourth column of **Table 2.4** shows the average age of the students generating the benefits (excluding retired and leisure students). The time horizon for the analysis is 32 years, which is the difference between the average age (33 years) and retirement age (65 years). The total number of CHEs completed during the year of analysis for the entire student body is 154,472. The last column of the table shows the average time the students are actually in attendance during the analysis year. This information is needed to determine the opportunity cost of their education (or the time they would otherwise have been working and earning wages).

Table 2.4. Levels of Achievement

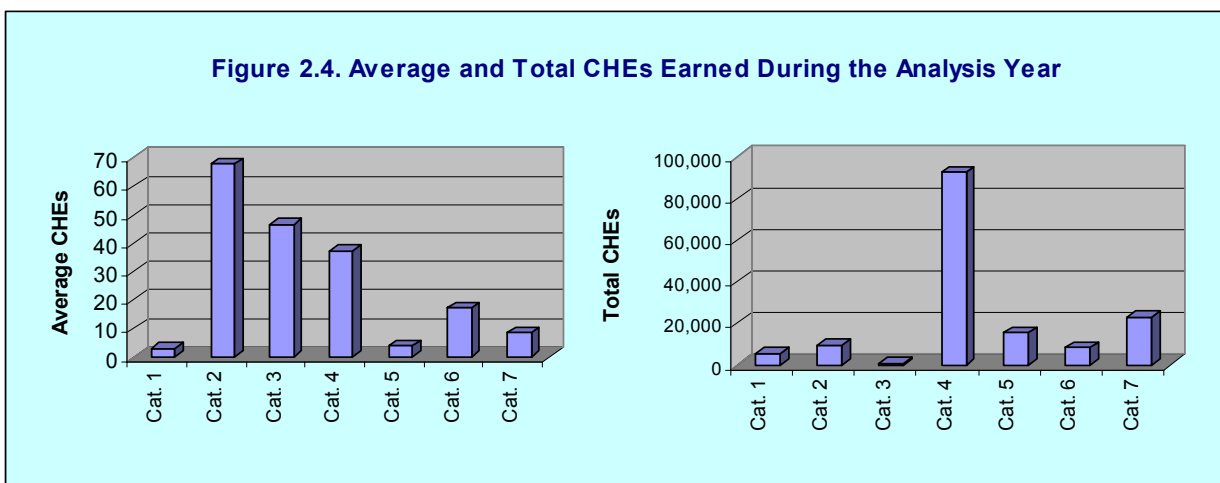
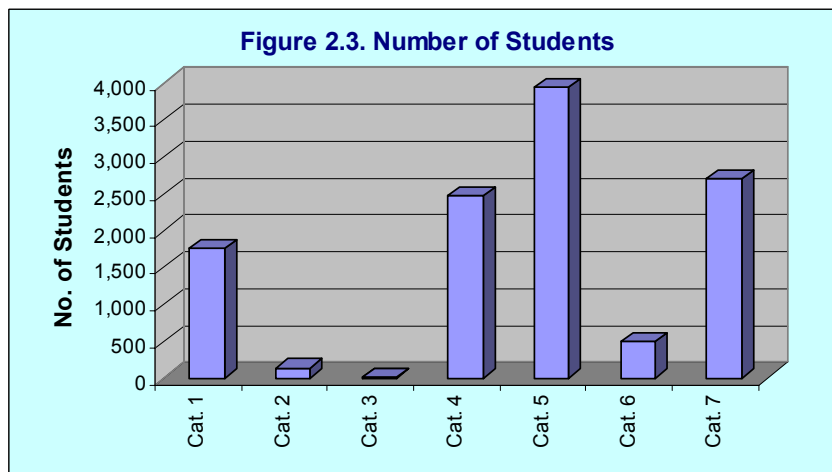
Student Body Category	Student Distribution	Student Headcount	Average Age*	CHEs This Year	Total CHEs	CHEs/FTE**
Cat. 1 - Retired and/or leisure students	15%	1,753	66	3	5,329	0.1
Cat. 2 - Associate's Degree completers	1%	139	29	68	9,456	1.5
Cat. 3 - Certificate completers	0%	12	31	47	560	1.0
Cat. 4 - Transfer track and non-completing	21%	2,472	30	37	92,453	0.8
Cat. 5 - Workforce students	34%	3,946	43	4	15,468	0.1
Cat. 6 - ABE/ESL/GED	4%	485	28	17	8,347	0.4
Cat. 7 - All other students	23%	2,702	38	8	22,859	0.2
Total or weighted averages	100%	11,509	33	15	154,472	0.3

*Note: The average age and the average CHEs of the entire student body (shown in the bottom row of the table) do not include retired, leisure or court-required students, as these students are backed out of the study altogether. Their total CHEs, however, are included in the impact calculations, because, as paying students, they comprise a portion of the total number of CHEs produced by Southwestern. As a result, multiplying student headcount (Column 3) times the average CHEs of the entire student body may not agree with the total number of CHEs shown at the bottom of Column 6.

**Note: A total of 45 CHEs is required to achieve one full-time year equivalent of study, or FTE.

Source: Computed internally by the model based on data supplied by Southwestern.

⁷ This does not mean that ABE/ESL/GED education has lower value; it simply means that these students must complete an extra step before they can compete effectively in the job market and reap the benefits of higher earnings. The economic value attributable to the educational achievements of ABE/ESL/GED students is assumed to be roughly 45.8% (relative to a 100% attribution for other students), based on previous studies completed by CCbenefits, Inc.



GROSS PRIVATE BENEFITS (INCREASED EARNINGS)

The numbers shown in **Table 2.5** are constructed from national data and point to the effect of schooling on employee earnings. These data become an important part of our basis for estimating the student earnings benefits reported below in **Chapters 3 and 4** below.

Table 2.5 indicates that earnings are highly correlated with education. Correlation, however, does not necessarily mean causation. Higher education is not the only factor explaining the private and public benefits reported in the statistics. Other variables such as ability, family background, and socioeconomic status play significant roles. Not taking these other factors into account results in what is often termed an “ability bias” in education benefit estimates. The *simple correlation* between higher earnings and education nonetheless defines the *upper limit* of the effect measured. Our estimates of higher education’s impact on earnings are based on a survey of recent econometric

studies. A literature review by Chris Molitor and Duane Leigh (March, 2001) indicates that the upper limit benefits defined by correlation should be discounted by 10%. Absent any similar research for the social variables (health, crime, and welfare and unemployment), we assume that the same discounting factor applies as well to the public benefits.

As education milestones are achieved, students move into higher levels of average earnings. **Table 2.5** shows average earnings by one-year education increments, linked to the gender and ethnicity profile of the Southwestern student body. We assume that *all* education has value, and thus attribute value to students completing full steps as well as those completing less than full steps. The differences between the steps are indicated in the last column.

Table 2.5. Weighted Average Earnings

Entry Level	Average Earnings*	Difference
One year short of HS/GED	\$14,458	NA
HS/GED equivalent	\$22,891	\$8,433
One-year Certificate	\$26,633	\$3,742
Two-year Associate Degree	\$31,429	\$4,795
One year post Associate Degree	\$36,108	\$4,680

* Note: The data in this table reflect earnings at the midpoint of the individual's working career, not immediately upon exiting college.

Source: Computed from data supplied by the U.S. Census Bureau, regionalized for the Southwestern Service Area, and weighted to reflect the specific gender and ethnicity profile of the Southwestern student body.

GROSS ANNUAL PUBLIC BENEFITS

As shown in **Table 2.5**, students benefit from higher education through higher earnings, and society benefits from higher student earnings as well. As will be shown in **Chapter 3** below, higher earnings translate into additions in Gross State Product (GSP), which basically adds non-labor income to the students' added labor income (i.e., higher earnings). The public benefits from added tax revenues collected from both labor and non-labor income.

Higher education is also associated with a variety of lifestyle changes that generate savings (e.g., reduced welfare and unemployment, improved health, and reduced crime). Note that these are *external* or *incidental* benefits of education (see the "Beekeeper Analogy" box). Colleges are created to provide education, not to improve health or reduce crime, welfare and unemployment. The fact that these incidental benefits occur

and can be measured, however, is a bonus that enhances the economic attractiveness of the college operations. It should not be taken to mean that taxpayers should channel more money to colleges on the strength of these external benefits. Our purpose is simply to bring to the attention of education stakeholders that the activities of Southwestern impact society in many more ways than simply the education it provides. In so doing, we have identified and measured some social benefits obviously related to educational achievements and included them in the mix of impacts generated by the college.

Assuming state and local taxpayers represent the public, the public benefits of higher education can be gauged from two perspectives, 1) a *broad* perspective that tallies all benefits, and 2) a *narrow* perspective that considers only changes in the revenues and expenditures of the state and local government.

Adjustment Factors

Before continuing, it is important to note that all of our gross benefit estimates are adjusted to account for the following three factors: 1) the ability bias discussed above,⁸ 2) the alternative education variable, and 3) the level at which a college may still operate absent all state and local government support (also called the “Shutdown Point”). Detail on these variables and how they are estimated may be found in **Appendices 2 and 3** at the end of this report.

The Beekeeper Analogy

The classic example of a positive externality (sometimes called “neighborhood effect”) in economics is that of the private beekeeper. The beekeeper’s only intention is to make money by selling honey. Like any other business, the beekeeper’s receipts must at least cover his operating costs. If they don’t, he will shut down.

But from society’s standpoint there is more. Flower blossoms provide the raw input bees need for honey production, and smart beekeepers locate near flowering sources such as orchards. Nearby orchard owners, in turn, benefit as the bees spread the pollen necessary for orchard growth and fruit production. This is an uncompensated external benefit of beekeeping, and economists have long recognized that society might actually do well to subsidize positive externalities such as beekeeping.

Colleges are in some ways like the beekeepers. Strictly speaking, their business is in providing education and raising people’s incomes. Along the way, however, external benefits are created. Students’ health and lifestyles are improved, and society indirectly benefits from these just as orchard owners indirectly benefit from the location of beekeepers. Aiming at an optimal expenditure of public funds, the CCbenefits model tracks and accounts for many of these external benefits, and compares them to the public cost (what the taxpayers agree to pay) of college education.

⁸ As indicated earlier, gross benefits are adjusted downward by 10% based on the work of Molitor and Leigh (March, 2001).

Higher Incomes

Broad Perspective: Higher education accelerates general economic growth. The economy generates more income (both labor and non-labor income) than it would without the college skills embodied in the labor force. From the broad taxpayer perspective, the total increase in regional income is counted as a benefit of college education, reduced to account for the several factors such as the ability bias discussed above.

Narrow Perspective: Higher regional income translates into higher state and local *tax collections*. In the narrow taxpayer perspective we count only the estimated higher state and local taxes that will be collected from the increase in regional income.⁹

Health Savings

The improved health of students generates savings in three measurable ways: 1) lower absenteeism from work, 2) reduced smoking, and 3) reduced alcohol abuse (see **Table 2.6** and **Figures 2.5** through **2.7** below). In general, statistics show a positive correlation between higher education and improved health habits. **Table 2.6** shows the calculated reductions in the incidences of smoking and alcohol abuse as a function of adding higher education, also linked to the gender and ethnicity profile of the Southwestern student body. Recall from above, these savings are reduced to account for the several factors such as the ability bias discussed above.

Broad Perspective: The benefits from reduced absenteeism are equal to the average earnings per day multiplied by the number of days saved (less the students covered by the alternative education variable and other reduction factors, as above). These are benefits that accrue largely to employers. Smoking and alcohol-related savings accrue mostly to the individuals who will *not* have to incur the health-related costs. In the broad taxpayer perspective, all health-related benefits, including those that accrue solely to employers and individuals, are considered public benefits.

Narrow Perspective: Taxpayers benefit from reduced absenteeism to the extent that the state and local government is an employer. Accordingly, we assume a taxpayer's portion of absenteeism savings at 23.8%, equal to the estimated public portion of

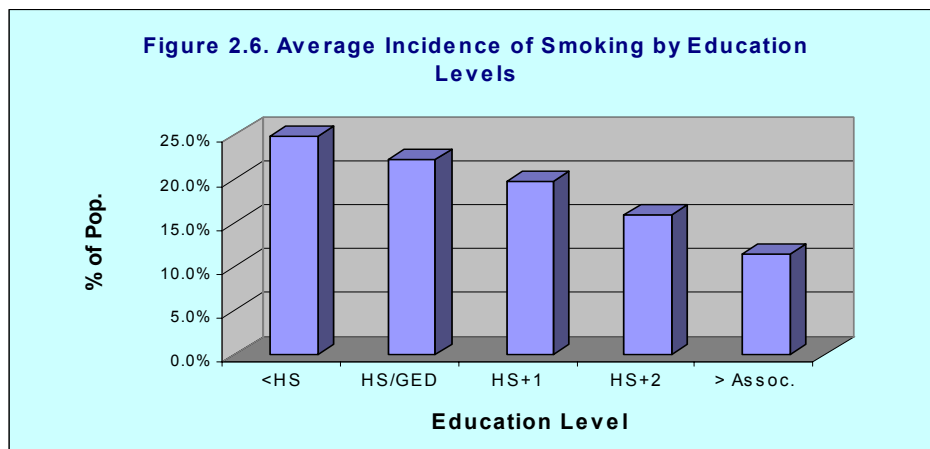
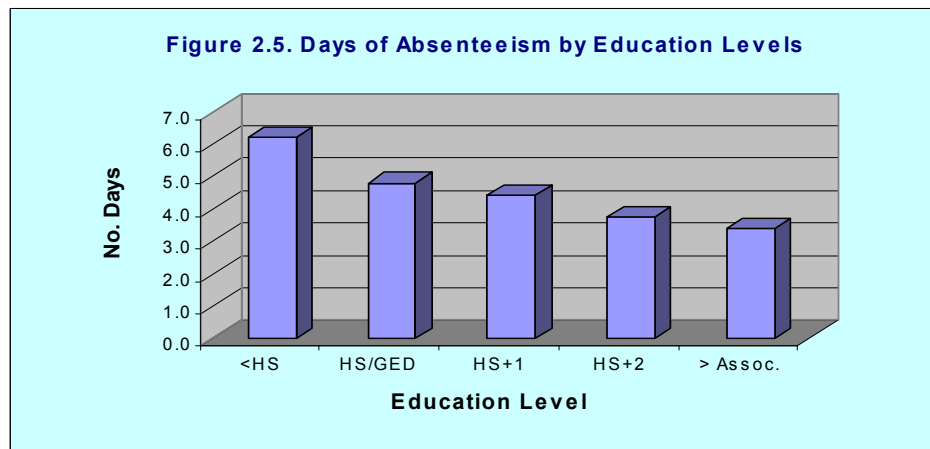
⁹ Tax data are obtained from the U.S. Census Bureau and the U.S. Department of Commerce.

employment in the region.¹⁰ As for smoking and alcohol-related savings, the taxpayers benefit to the extent that state and local health subsidies (to hospitals, for example) are reduced. We assume that 6.0% of the total benefits can be counted as taxpayer savings.

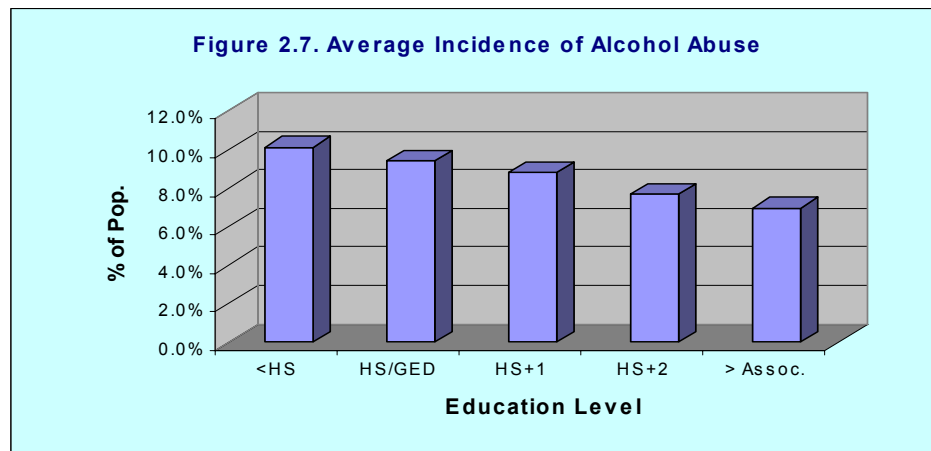
Table 2.6. Reduced Absenteeism, Smoking, and Alcohol Habits

Education Level	Absenteeism		Smoking		Alcohol Abuse	
	Days	%/Year	Average	Reduction	Average	Reduction
< HS/GED	6.2	2.4%	24.8%	NA	10.1%	NA
HS/GED equivalent	4.8	1.8%	22.1%	10.8%	9.4%	6.9%
One year post HS or less	4.4	1.7%	19.7%	10.7%	8.8%	6.8%
Two years post HS or less	3.7	1.4%	15.8%	19.7%	7.7%	12.5%
> Associate Degree	3.4	1.3%	11.4%	27.8%	7.0%	9.2%

Sources: See Volume 2: Detailed Results, Tables 2 through 7.



¹⁰ The ratio of state and local government earnings over total state earnings (Regional Economic Information System – REIS, Bureau of Economic Analysis, U.S. Department of Commerce, 1998).



Crime Reduction Benefits

Table 2.7 and **Figure 2.8** show the rates of incarceration by education levels – incarceration drops on a sliding scale as education levels rise.¹¹ These statistical patterns are calibrated to the gender and ethnicity profile of the Southwestern student body. The implication is, as people achieve higher education levels, they are statistically less likely to commit crimes. The difference between before and after the education achievement (multiplied by the average incarceration cost per year) comprises the upper limit of the benefits attributable to education. We identify three types of crime-related expenses: 1) the expense of incarceration, including prosecution, imprisonment, and reform, 2) victim costs, and 3) productivity lost as a result of time spent in jail or prison rather than working.

Broad Perspective: From the broad taxpayer perspective, all reductions in crime-related expenses are counted as a benefit (discounted by the reduction factors discussed above).

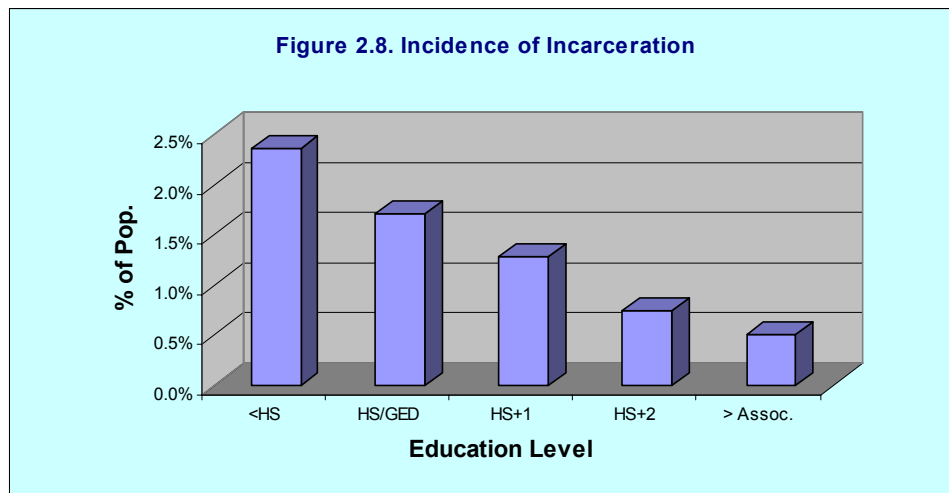
Narrow Perspective: We assume that nearly all of the incarceration savings accrue to the state and local taxpayers – federal funding covers the remainder. Crime victim savings are avoided costs to the potential victims, not to the taxpayers. As such, we claim none of these as taxpayer savings. Finally, we apply our “composite” state and local government average tax rate (14.4%) to the added productivity of persons *not* incarcerated to arrive at the taxpayer benefits.

¹¹ See also Beck and Harrison: <http://www.ojp.usdoj.gov/bjs/abstract/p00.htm>.

Table 2.7. Incarceration Rates

Education Level	Average	Reduction
< HS/GED	2.4%	NA
HS/GED equivalent	1.7%	27.7%
One year post HS or less	1.3%	24.9%
Two years post HS or less	0.7%	42.1%
> Associate Degree	0.5%	31.5%

Sources: See Volume 2: Detailed Results, Tables 8 through 11.



Welfare and Unemployment Reduction Benefits

Lower welfare and unemployment are statistically associated with higher education. **Table 2.8** and **Figure 2.9** relate the probabilities of individuals applying for welfare and/or unemployment assistance to education levels (linked to the gender and ethnicity profile of the Southwestern student body). As above, all welfare and unemployment savings are reduced to account for alternative education opportunities, ability bias, and other reduction factors discussed above.

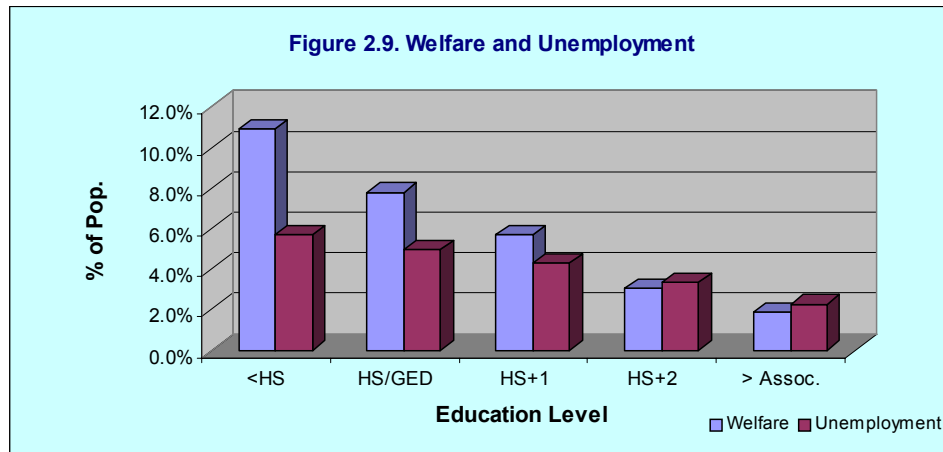
Broad Perspective: Reduced welfare and unemployment claims multiplied by the average cost per year are counted in full as benefits in the broad taxpayer perspective.

Narrow Perspective: Taxpayer benefits from reduced welfare are limited to 16.0% – the extent to which the state and local taxpayers subsidize the welfare system. None is claimed for unemployment, because none of these costs are borne by the state taxpayers.

Table 2.8. Welfare and Unemployment

Education Level	Welfare		Unemployment	
	Average	Reduction	Average	Reduction
< HS/GED	10.9%	NA	5.7%	NA
HS/GED equivalent	7.8%	28.7%	5.0%	12.9%
One year post HS or less	5.7%	26.8%	4.3%	13.0%
Two years post HS or less	3.0%	46.6%	3.3%	23.0%
> Associate Degree	1.9%	37.7%	2.3%	31.4%

Sources: See Volume 2: Detailed Results, Tables 12 through 15.



COSTS

There are two main cost components considered in the analytic framework: 1) the cost incurred by the student, including the expenses for tuition and books, and the opportunity cost of his or her time (represented by the earnings foregone while attending Southwestern) and, 2) the cost incurred by state and local government taxpayers, which is part of the college’s operating and capital costs (see **Table 2.1**). These are briefly discussed below.

Opportunity Cost of Time

The opportunity cost of time is by far the largest cost. While attending Southwestern, most students forego some earnings, because they are not employed, employed only part-time, or, as is often the case, employed at jobs that pay less than what would be possible if they were not attending school.

The opportunity cost (earnings foregone) incurred by the student body in the aggregate is estimated in **Table 2.9**. The first number in the table - \$25,274 - is the overall average annual income of the student body (given gender and ethnicity characteristics). This

number is derived from the earnings categories by education entry levels given in **Table 2.5**, although with some important modifications, as briefly described below:

- Earnings data in **Table 2.5** are derived using national census data, adjusted by a ratio of regional earnings to national earnings per worker. These data are averages based on trajectories of earnings for all ages, from 17 to 65 (the time typically spent engaged in the workforce).
- Average earnings of \$25,274 thus define the midpoint of a working life trajectory that begins with low entry-level wages and culminates with a typical worker's highest wages around age 60.¹² However, what we actually need are the earnings of the students while enrolled (which are expected to be less than earnings at the midpoint).
- To calculate the average earnings of the student body, we condition earnings at the midpoint by the student body's entry level of education and average age (33 years in **Table 2.4**), as specified by the well-known and tested Mincer equation. The result, \$19,075 per year, is the average earnings of the Southwestern student body, assuming full-time employment. This is the second number shown in the table.

Once we have determined the average annual income of the students, we deduct the retired/leisure student body (15.2%) to arrive at the net number of students subject to opportunity cost calculations – 9,756 students. (Retired and leisure students typically do not expect to receive higher earnings as a result of their college attendance, so their opportunity cost is set at \$0.) It is estimated that the average student spends at least 34% of the year at the college, time which he or she could have otherwise spent working. This translates to a total of \$6,480 in earnings foregone per student per year.

For the 4,293 non-working students, the opportunity cost is the full measure of the incomes not earned during their college attendance. This comes to a total of \$27.8 million for the entire student body (= 4,293 students x \$6,480 in earnings). The 5,463 working students, on the other hand, are charged only a fraction of the full opportunity cost, plus the value of the leisure time given up. The college estimates that the working students are earning, on average, about 64% relative to full earning potential (i.e.,

¹² This profile of lifetime earnings is well documented in labor economics literature. For example, see Willis (1986), which is supported by the well-known theoretical and empirical work of Becker (1964) and Mincer (1958).

because the student is going to college, he is only able to hold a job that pays about 64% of what he would be statistically earning had he been working full-time). The total opportunity cost for such students thus comes to around \$12.8 million (= 5,463 * \$6,480 * 36%), plus an additional \$7.1 million to account for the leisure time given up.¹³

Finally, we adjust the opportunity cost downward by the unrestricted portion of Pell and other student aid grants. Such funds are paid out directly to the students to use as they so choose, and are thus excluded from the student opportunity cost calculations. Altogether, the combined opportunity cost for all of the students at the college comes to around \$46.9 million.

Table 2.9. Opportunity Costs (Earnings Foregone), \$ per Year

		Opp. Cost
Average statistical annual income of given gender and ethnicity profile	\$25,274	
Annual income given age, gender and ethnicity profile of students	\$19,075	
Total number of students (net of retired/leisure students)	9,756	
CHEs per student (net of retired/leisure students)	15.3	
Percent (%) of full year in attendance	34%	
Earnings foregone while attending, per student per year	\$6,480	
Students not working while attending (net of retired/leisure students)	4,293	
Total opportunity cost for non-working students		\$27,816,798
Students working while attending college (net of retired/leisure students)	5,463	
Earnings relative to statistical averages (%)*	64%	
Total opportunity cost for working students		\$12,809,067
Value of leisure time, per working student per year (at 1/3 working time)	\$1,296	
Total value of leisure time foregone		\$7,080,640
Pell and other student aid	\$1,972,941	
Unrestricted portion of student aid**		(\$789,176)
GRAND TOTAL STUDENT OPPORTUNITY COST		\$46,917,329

*Note: This variable takes into account what students are earning relative to what they would statistically be earning had they chosen to work full-time instead of attend college. It is calculated internally in the analytical model based on data collected from nearly 200 colleges analyzed to date.

**Note: Southwestern provided data on the total grants and scholarships awarded to students during the analysis year. For the purposes of this report, we assume that 60% of these funds were restricted to tuition and fees, while the remaining 40% was paid out directly to the student to use as he or she so chooses. We thus discount total student opportunity cost by the estimated portion of student aid that was unrestricted.

Sources: Computed from data supplied by the college and by the U.S. Census Bureau. See also James Henderson and Richard E. Quandt, *Microeconomic Theory: A Mathematical Approach* (New York: McGraw-Hill Book Company, 1971).

The Budget

Beyond the student perspective, our assessment of Southwestern considers the benefits and costs from the state and local government taxpayer perspective. Accordingly, only

¹³ Elementary consumer theory presents a tradeoff between income and leisure (e.g., Henderson and Quandt, 1971). Students able to work full- or part-time while attending college maintain all or part of their incomes, but give up a significant amount of their leisure time. Failing to impute value to the leisure foregone would underestimate the cost of attending the college.

the state and local government revenues in **Table 2.1** are included as costs in the investment and benefit/cost assessment. As indicated in the text below, our analysis includes an estimate of the level at which the college can operate absent all state and local government support. No state and local taxpayer benefits are counted for this level of college operations.

OTHER ASSUMPTIONS

Table 2.10 lists several other assumptions imbedded in the analytic model: 1) the discount rate and time horizon;¹⁴ 2) crime-related costs (incarceration costs that are inclusive of the cost per prison year plus all costs associated with arrest, investigation, trial and finally incarceration); 3) welfare and unemployment costs per year;¹⁵ and 4) health-related costs.¹⁶ The alternative education opportunity assumption is discussed later in this chapter in association with the regional economic impacts. See also **Appendix 3**.

Table 2.10. Miscellaneous Variables

	Variables
Discount rate	4.0%
Time horizon, years to retirement	32.4
Average cost per prison year (arrest, trial, incarceration, rehab. etc.)	\$66,000
Average length of incarceration (total years)	4.0
Average victim cost	\$ 85,000
Average cost per welfare year	\$ 12,000
Average duration on welfare (total years)	4.0
Average cost per unemployment year	\$ 10,000
Average duration on unemployment (total years)	4.0
Smoking-related medical costs per year	\$ 3,000
Alcohol-related medical costs per year	\$ 7,000
Alternative education opportunities	16.8%

Sources: The time horizon applies an assumed retirement age of 65, minus the average of the student body from Table 2.4. Sources for the social variables may be found in Volume 2: Detailed Results, Tables 5 through 15. For details on the alternative education variable, see Appendix 3.

¹⁴ See **Chapter 3** for a more in-depth discussion of the discount rate.

¹⁵ As indicated in the table, we assume that the average duration on welfare and unemployment is 4.0 and 4.0 years, respectively. This means that, over the next thirty years or so, the cumulative incidence of welfare and/or unemployment will be spread evenly over the time horizon – it is not a consecutive period.

¹⁶ The incarceration, health, welfare and unemployment probability, and cost variables are internal to the analytic model.

REGIONAL ECONOMIC GROWTH AND DEVELOPMENT BENEFITS

In general, the regional economy is affected by the presence of Southwestern in two ways: from its day-to-day operations (including capital spending), and from students who enter the workforce with increased skills. Day-to-day operations of the college provide the *direct* jobs and earnings of the faculty and staff, and additional *indirect* jobs and earnings through the action of regional multiplier effects. At the same time, the presence of college-trained past and present Southwestern students in the local workforce deepens the economy's stock of human capital, which attracts new industry and makes existing industry more productive.

In the case of college operation and capital spending, it is important to deduct the impact of funds (both public and private) that are diverted from other uses to support the college. In this report, we show only the net economic effect of college operations and capital spending, leaving human capital effects as by far the greater economic effect of the college. These adjustments are described in greater detail in **Chapter 4**.

Estimating the regional economic effects requires a number of interrelated models. Multiplier effects are obtained with an input-output (IO) model constructed for the Southwestern economic region.¹⁷ Estimating college operations effects requires an additional model that takes college expenditures, deducts spending that leaks from the economy, and bridges what is left to the sectors of the IO model.

Estimating the skill-enhancing effect of past students on the regional economy entails five basic steps:

¹⁷ The Southwestern economic impact model is constructed using data purchased from Economic Modeling Specialists, Inc. and EMSI input-output (IO) modeling software (Moscow, ID: 2002). This software employs a standard regional-purchase-coefficient (RPC) non-survey IO modeling technique, similar to that used in constructing the Utah Multiregional IO (UMRIO) model (Governor's Office of Planning and Budget et al. [Salt Lake City, UT: Demographic and Economic Analysis, 1994]), the Idaho Economic Modeling Project (IDAEMP) (M. H. Robison, R. Coupal, N. Meyer, and eds [Moscow, ID: University of Idaho, College of Agriculture, 1991]), the Oregon Economic Modeling System (OREMS) (M. H. Robison, Proceeding at the 29th Annual Pacific Northwest Economic Conference [Missoula, MT: 1995]), models chronicled for small areas (see M. H. Robison, "Community Input-Output Models," *Annals of Regional Science* 31 no. 3 [1997]: 325-351), IMPLAN models constructed using IMPLAN IO modeling software (Stillwater, MN: Minnesota IMPLAN Group, annual) and "Regional IO models" (RIO models) constructed by Rutgers University, Center for Urban Policy Research (New Brunswick, NJ: Rutgers University, 2002).

1. Estimate the number of past Southwestern students still active in the regional workforce.
2. Adjust for alternative education opportunities, ability bias, and the level of education possible absent state and local government support.
3. Estimate the increased earnings of the students still active in the regional workforce.
4. Estimate the effect of Southwestern-trained workers on the productivity of other factors (e.g., capital, land, unskilled workers, etc.), and account for associated income increases to these factors (i.e., effects on non-labor income).
5. Allocate the direct increase in regional income to affected economic sectors, and augment these to account for a collection of demand- and supply-side multiplier effects.

The end results include estimates of the impact of past student skills and increased productivity on: 1) the size of regional industries, and 2) the size of the overall regional economy.

The Impact of Southwestern Operations

The first step in estimating the gross impact of Southwestern operations is to assemble data on its combined operating and capital expenditures. These data are assembled from college budgets and collected into the categories of **Table 2.11**. Column 1 simply shows the total dollar amount of spending. Column 2 apportions that spending to local (i.e., in-region) vendors. The net local portion is derived in Column 3.

Table 2.11, by itself, might provide useful information to local audiences – Chambers of Commerce, local business establishments, Rotary clubs, and the like. The table indicates that the college is a “good neighbor” in the local community, evidenced by the fact that an estimated 83% of all college expenditures benefit local vendors (\$20.6 million / \$24.9 million = 83%).

Table 2.11. Profile of Southwestern Spending In and Out of Regional Economy

Spending Categories	Total Dollar Amount (1)	% Local (2)	Net Local Spending (3)
Salaries, Wages, and Benefits	\$13,999,896	98%	\$13,719,898
Other Operating Expenditures	\$10,855,235	64%	\$6,899,605
TOTAL	\$24,855,131	83%	\$20,619,503

Source: Total dollar amounts provided by the college. Estimated percent of spending that occurs locally calculated internally in the analytical model.

Estimating CHEs Embodied in the Present-Day Workforce

This section describes the submodel for estimating the CHEs of past Southwestern instruction embodied in the present-day regional workforce. The process is documented in **Table 2.12** below.

Column 1 provides an estimate of the enrollment history (unduplicated headcount) of Southwestern students. Column 2 represents the non-retired students, in other words, the students who have the potential to go into the workforce. Column 3 is the same as Column 2, but net of students who leave the region immediately upon leaving Southwestern. As shown in the table, 80% of the students remain in the area upon leaving the college, and 20% leave the region.

A comparison of Columns 3 and 4 indicates that all past students have left Southwestern except for the last three years (2002-2005) where students are still enrolled (the leaver assumptions are shown in Column 9). Column 5 further reduces leavers to focus only on those who have settled into a somewhat permanent occupation. As shown in Column 10 (the “settling factor”), it is assumed that all students settle into permanent occupations by their fourth year out of school. Settling-in assumptions are specified in **Table 2.2** above.

Column 6 transitions further from leavers who have settled into jobs to leavers still active in the current workforce. Here we net off workers who, subsequent to leaving Southwestern and settling into the local workforce, have out-migrated, retired, or died. As shown in **Table 2.2**, 33% of the past students will out-migrate, retire or die over the course of the next thirty years. This “thirty-year attrition” follows an assumed logarithmic decay function shown in Column 11.

Table 2.12. Estimating CHEs of Instruction Embodied in the Workforce

Year	Student Enrollment Headcount*	Subtract Retired Students	Subtract Students Migrating Immediately	Students Who Have Left College (Leavers)	Leavers Who Have Settled Into Jobs	# Settled Into Jobs - Active in the Workforce	CHEs		Assumptions		
							Average CHEs	Embodied in the Workforce	% of Students in Workforce	"Settling-In" Factor	Active in Workforce
	1	2	3	4	5	6	7	8	9	10	11
1976	6,730	6,113	5,807	5,807	5,807	3,891	10	40,451	100%	100%	67%
1977	7,254	6,589	6,259	6,259	6,259	4,250	10	44,186	100%	100%	68%
1978	8,796	7,990	7,590	7,590	7,590	5,223	10	54,299	100%	100%	69%
1979	10,911	9,911	9,415	9,415	9,415	6,566	10	68,260	100%	100%	70%
1980	11,409	10,363	9,845	9,845	9,845	6,958	10	72,335	100%	100%	71%
1981	10,911	9,911	9,415	9,415	9,415	6,743	10	70,107	100%	100%	72%
1982	8,396	7,626	7,245	7,245	7,245	5,259	10	54,672	100%	100%	73%
1983	8,087	7,346	6,978	6,978	6,978	5,133	10	53,368	100%	100%	74%
1984	8,015	7,280	6,916	6,916	6,916	5,156	10	53,604	100%	100%	75%
1985	8,021	7,286	6,921	6,921	6,921	5,229	10	54,365	100%	100%	76%
1986	8,426	7,653	7,271	7,271	7,271	5,567	10	57,877	100%	100%	77%
1987	9,338	8,482	8,058	8,058	8,058	6,253	10	65,004	100%	100%	78%
1988	9,009	8,183	7,774	7,774	7,774	6,113	10	63,556	100%	100%	79%
1989	9,949	9,037	8,585	8,585	8,585	6,842	10	71,131	100%	100%	80%
1990	9,924	9,014	8,563	8,563	8,563	6,916	10	71,906	100%	100%	81%
1991	9,533	8,659	8,226	8,226	8,226	6,733	10	70,001	100%	100%	82%
1992	10,168	9,236	8,774	8,774	8,774	7,278	10	75,667	100%	100%	83%
1993	9,812	8,912	8,467	8,467	8,467	7,118	10	73,999	100%	100%	84%
1994	8,911	8,094	7,689	7,689	7,689	6,551	10	68,107	100%	100%	85%
1995	9,702	8,812	8,372	8,372	8,372	7,228	10	75,149	100%	100%	86%
1996	11,249	10,218	9,707	9,707	9,707	8,494	10	88,303	100%	100%	88%
1997	12,390	11,254	10,691	10,691	10,691	9,481	10	98,567	100%	100%	89%
1998	13,902	12,627	11,996	11,996	11,996	10,781	10	112,081	100%	100%	90%
1999	14,608	13,269	12,605	12,605	12,605	11,481	10	119,356	100%	100%	91%
2000	15,967	14,503	13,778	13,778	13,778	12,717	10	132,213	100%	100%	92%
2001	15,242	12,920	10,338	10,338	10,338	9,671	15	147,841	100%	100%	94%
2002	15,168	12,858	10,288	10,288	10,288	9,753	15	149,101	100%	100%	95%
2003	14,412	12,217	9,775	9,770	8,793	8,448	15	129,150	100%	90%	96%
2004	11,697	9,915	7,934	7,755	5,816	5,663	15	86,576	98%	75%	97%
2005	11,509	9,756	7,806	6,635	3,318	3,318	15	50,719	85%	50%	100%
Embodied Total								2,371,950			

*Note: Column 1 shows the combined total of credit and non-credit students. In the case that enrollment data as far back as 1976 is unavailable, the missing information is calculated internally in the analytical model.

**Note: CCbenefits conducted an impact study for Southwestern in 2002 reflecting academic year 1999-2000. For this reason, we apply the same average CHEs per student from the previous study to 2000 and any years prior to that. Beyond 2000, the average CHEs for the current year of study apply.

Sources: Computed from data supplied by Southwestern. See also Tables 2.4 and 2.2.

Column 7 shows the average CHEs generated per year back to 1976. In general, colleges indicate a lack of historic information on this variable, and we resort to assuming that the CHE estimate for the current year (i.e., the analysis year) applies though time.¹⁸ There is good reason to believe this assumption likely puts a downward bias on our estimates, and our resulting workforce embodied CHE estimate might accordingly be viewed as conservative.¹⁹

¹⁸ We used the current year estimate of CHEs (see **Table 2.4**), adjusted for the retired students, as a proxy for the average achievement per student in all prior years before FY 2005. In the case where a different number is supplied, the college provided us with a more accurate CHE estimate for that particular year.

¹⁹ The reason is that the role of community and technical colleges has changed over the years from primarily serving transfer students to a greater focus on workforce students. Inasmuch as transfer

Column 8 shows the product of the year-by-year average CHEs in Column 7, and the estimate of the number of past students active in the current workforce in Column 6. Looking to the total in Column 8, we estimate that the current workforce of the Southwestern economic region embodies some 2.4 million CHEs of past Southwestern instruction.

From Embodied CHEs to Direct Regional Income Effects

The next step in calculating the direct and indirect effect of past student productivity is to convert the 2.4 million embodied CHEs (shown in **Table 2.12**) to regional income. In the standard model, regional income is expressed as a function of physical and human capital. Human capital is increased by adding new workers or by enhancing the skills of existing workers – the former adds the productivity of the new workers, the latter increases the productivity of existing workers.

A key part of the CCbenefits SEIM model is the “engine” that estimates the value per CHE of instruction.²⁰ The product of per-CHE added earnings, and the total of embodied past Southwestern instruction (2.4 million CHEs, **Table 2.12**) provides the dollar estimate of how much more students are earning as a result of their Southwestern coursework.

Before turning to the income calculation, however, it is fair to ask to what degree past Southwestern students would have been able to obtain schooling (and therefore skills) absent the publicly funded colleges and universities in the state. This is the common “with and without condition” in applied economic analysis.

The alternative education opportunity variable (16.8%) is internal to the analytical model and is derived through the application of a regression analysis based on estimates received from colleges previously analyzed by CCbenefits, Inc (see **Appendix 3**). It is designed to take into account opportunities such as private trade schools and colleges, correspondence schools, and so on.²¹ Accordingly, when calculating the net increase in

students are more likely than workforce students to be full-time, our estimated average CHEs per student will understate the actual historic average.

²⁰ Briefly, the engine that estimates the value per CHE does so by combining earnings/education data from **Table 2.5** with information on aggregate student achievements during the analysis year (from **Table 2.4**). These calculations are discussed more fully in **Chapter 4**.

²¹ As indicated in **Chapter 1** of this report, our analysis is not intended as a vehicle for comparing one college with others – it examines Southwestern as a member of the community and technical college system, and not as a competitor with other two-year colleges in the state.

regional income attributable to Southwestern, the historic CHEs indicated in **Table 2.12** should be reduced by 16.8%.

We further reduce the 2.4 million embodied CHEs to account for the fact that the college might still be able to operate at some level of enrollment absent state and local government support. Our overall modeling approach includes a sub-model with the students' demand curve for Southwestern education. The sub-model simulates a reduction to zero state and local support by progressively increasing tuition. As tuition increases, enrollment declines as indicated by the demand curve (see **Appendix 2** for technical details). Below some minimum level of enrollment, the college would have to shut down; our analysis assumes this level to be 35% of the present enrollment. In the case of Southwestern, the zero state and local government funding level is less than the assumed 35% shutdown level, so the reduction is zero.

Once we have discounted the number of embodied CHEs by the factors described above, we can determine both the direct and indirect effect of increased human capital on regional income. The direct effect is conveyed in the higher earnings of the newly-skilled workers themselves. This is calculated by multiplying the total number of CHEs embodied in the workforce (in this case, 2.4 million CHEs) times the estimated value (i.e., added earnings) per CHE.

Calculating the indirect effect is somewhat more complicated and requires the use of the regional IO model as described above. The IO model is designed to capture the way a dollar turns over in the economy, generating a set of regional IO multipliers that are later applied to the direct effects attributable to past student productivity.

The Industries Where Past Students Work

The use of IO multipliers in this way requires that the direct effects be disaggregated into specific industrial sectors. Disaggregating direct impacts avoids IO aggregation error,²² and it facilitates an analysis of Southwestern's contribution to the business sector – an analysis that appears in **Chapter 4**.

²² Aggregation error occurs when a model with many industrial sectors is reduced through industry combination to a model with many fewer "aggregated industries" (see Miller and Blair, 1985, Chapter 5). Our initial estimate of past-student direct earnings effects appears with no industry detail, and would thus require aggregating all industries to a single aggregate. By any measure, use of such an aggregated multiplier would court an unacceptable aggregation error. At the same time, the EMSI IO modeling system conveys industry detail at roughly the SIC 4-digit level. An assembly of data on direct past

Table 2.13 provides information on the sectoral distribution of earnings in the regional economy. The table provides a draft-stage vehicle for collecting information from Southwestern on the sectoral breakdown of their past students, and it documents the information provided by the college. **Table 2.13** appears with three columns briefly described below.

Column 1 appears for reference and simply shows the current distribution of all regional earnings in the Southwestern Service Area economy by sector. For example, 9.5% of all regional earnings are in the Agriculture and Agricultural Services sector, 4.4% of all earnings are in the Finance, Insurance, and Real Estate sector, and so on. Column 2 shows the distribution by sector of past Southwestern student earnings, i.e., an estimate of the industries where they currently work. For example, while 9.5% of all regional earnings are in the Agriculture and Agricultural Services sector, only 4.0% of past Southwestern student earnings are estimated to be in that sector. In contrast, while 4.4% of all earnings are in the Finance, Insurance, and Real Estate sector, 2.5% of past Southwestern student earnings are estimated to be in that sector.

There is a long-standing theory of regional development known as *stage theory*. The notion is that regional economies develop by progressing from “low stage industries” (agriculture, mining, logging, etc.), to “higher stage industries” (process manufacturing, fabricative manufacturing, etc.), and finally to specialized industries such as finance, engineering, and so on. The distribution of past Southwestern student earnings appears in Column 2. In general, it is assumed that past Southwestern students tend to find jobs in the higher development stage industries.²³

Column 3 applies the distribution of student percentages in Column 2 to the total historic CHEs embodied in the workforce. This latter total is obtained from **Table 2.12**, and reappears at the bottom of Column 3. In **Chapter 3**, we estimate the contribution to student earnings per CHE of Southwestern instruction. This product provides our

student effects at this fine level of detail is not realistic. Our solution is to disaggregate past student direct effects to the eighteen sectors appearing in **Table 2.13**.

²³ Parr (1999) describes four stages of economic development: primary production, process manufacturing, fabricative manufacturing, and producer services and capital export. We apply a “development score” to Parr’s stages: low scores for lower stage sectors and higher scores for higher development sectors. The scores are applied to employment in each sector, then normalized to form weights for distributing past Southwestern students. The end result is that past students favor higher stage industries. For additional detail on the use of this approach for classifying industries by industrial stage, see Rutgers et al, 2002.

estimate of the direct effect of past Southwestern operations on regional earnings by industry.

The Indirect Economic Development Effects of Students

The previous section described how we estimated the increment of regional earnings directly attributable to the Southwestern skills embodied in the current region workforce. Next, we turn to the indirect effects on both the demand- and supply-sides.

First, consider demand-side effects. Regional earnings are larger because of the Southwestern skills embodied in past students still active in the workforce. As earnings increase, so do industry outputs and industry purchases of inputs.²⁴ These in turn generate subsequent rounds of increased earnings, which are measured with the familiar multiplier effects. These indirect effects on the demand-side are estimated in the regional IO model by converting the embodied CHEs shown in **Table 2.13** into direct increased industry sales.

Second, consider the supply-side indirect effect. Economic development theory describes a process of “cumulative causation,” or “agglomeration,” whereby growth becomes in some degree self-perpetuating. The location of a new industry (A) in the region attracts other industries (B, C, and D) that use industry A’s outputs as inputs. This, in turn, produces subsequent rounds of industry growth, and so on.²⁵

To estimate agglomeration effects, we configure our economic region IO model to provide a set of so-called supply-driven multipliers (see for example Miller and Blair, 1985). We estimate the supply-side effects by converting the embodied CHEs shown in **Table 2.13** into direct increased industry value added, and then apply these to the multipliers of the supply-driven regional IO model. In order to increase the plausibility of this assumption, we apply only the direct effects associated with the industries in the highest stages of development.

²⁴ For example, associated with the increased output and earnings is an increased demand for both consumer goods and services, and goods and services purchased by businesses as inputs. These in turn produce a set of regional economic multiplier effects. These are all captured and included as part of the demand-side indirect effects.

²⁵ For a more complete discussion of agglomeration and cumulative causation, see Fujita, Krugman, and Venables, 1999.

Table 2.13. Distribution of Past Student Earnings by Industrial Sectors of the Regional Economy

Industries	Distribution of All Earnings	Distribution of Past Student Earnings	Distribution of Historic CHEs Embodied in Current Workforce
	1	2	3
Agriculture and Agricultural Services	9.5%	4.0%	89,894
Mining, Sand, and Gravel	0.7%	0.3%	4,385
Construction	5.0%	3.2%	76,738
Manufacturing: Food, Wood, Paper, and Textiles	7.6%	4.4%	65,776
Manufacturing: Chemicals, Petroleum, Stone, and Glass	0.8%	1.2%	21,925
Manufacturing: Computer and Electronic Equipment	0.5%	0.2%	1,827
Manufacturing: Other	0.4%	0.6%	10,597
Transportation	4.6%	3.0%	51,159
Public Utilities	0.9%	0.8%	13,521
Publishing and Communications	1.4%	1.9%	36,908
Trade: Wholesale and Retail	11.5%	8.9%	253,602
Finance, Insurance, and Real Estate	4.4%	2.5%	69,065
Motels, Eating/Drinking, and Amusement/Recreation	5.5%	8.1%	350,074
Consumer Services	3.4%	1.2%	43,120
Business Services	8.1%	8.7%	272,239
Medical/Educational/Social Services	14.2%	28.8%	720,976
Federal Government	4.0%	4.0%	47,517
State and Local Government	17.5%	18.1%	242,627
Total	100%	100%	2,371,950

Sources: Column 1 shows the percentage breakdown of all earnings in the college-hosting region across the industrial sectors shown in the table. Data on overall earnings by industry are obtained from the U.S. Department of Commerce, Regional Economic Information System, CA and SA series; the U.S. Department of Commerce, County Business Patterns; and the U.S. Department of Commerce, Bureau of Labor Statistics ES-202 series. Data in Column 2 were calculated based on data provided by college personnel. Data in Column 3 are historic CHEs reported in Table 2.12, distributed according to the proportions shown in Column 2.

SUMMARY

This chapter has presented the broader elements of our database and some of the key assumptions needed to estimate that data. In general, our data come from four sources, 1) published national data, 2) published local data, including data specific to the funding and operations of Southwestern, 3) data based on the best judgments of college institutional researchers and financial officers and 4), our own operating assumptions based on similar studies and common sense.

Additional detail on data sources, assumptions, and the general methods underlying our analyses are conveyed in the remaining chapters and appendices. The core of our findings is presented in the next two chapters – **Chapter 3** looks at Southwestern as an investment, while **Chapter 4** considers Southwestern’s role in regional economic growth. The appendices detail a collection of miscellaneous theory and data issues.

Chapter 3

INVESTMENT ANALYSIS – BENEFITS AND COSTS FROM A SINGLE YEAR'S OPERATIONS

INTRODUCTION

This chapter considers Southwestern as an investment from the perspectives of two important stakeholders: students and taxpayers. Five important measures of college performance are presented: 1) annual private and public benefits; 2) future benefits expressed as present values; 3) student and taxpayer investment benefit/cost ratios; 4) rates of return on student and taxpayer investments, and; 5) payback periods on initial investments.

ANNUAL BENEFITS

Our investment analysis focuses on the effects of a single year of college operations. We focus first on the annual benefits with the summary of our estimates presented in **Table 3.1**. The table has three sections: 1) student benefits (i.e., higher student earnings); 2) the economic growth benefits (i.e., labor and non-labor income), and; 3) an assortment of incidental social benefits (such as impact on health, crime, and welfare/unemployment benefits).

Higher Student Earnings

As indicated in **Table 3.1**, we estimate that each year Southwestern increases annual student earnings by an average aggregate amount of \$9.9 million.²⁶ Our estimates are based on the accumulated instruction provided by Southwestern, as well as statistics showing the effect of education on earnings. See also **Table 2.5** for additional details.

²⁶ Students are rewarded for their education with higher incomes now and into the future, generally for as long as they remain active in the workforce. At the same time, research indicates that the gap between educated and non-educated workers grows through time and the income increment from schooling grows as well. The annual increase in student earnings shown in **Table 3.1** refers to the middle of a student's career. We would expect, therefore, a somewhat smaller figure in the years immediately following our single year of college operations, and a larger figure in the latter part of the students' careers.

Table 3.1. Summary of Annual Benefits

	Units	Total
STUDENT BENEFITS, ANNUAL		
Higher student earnings	NA	\$9,941,000
TOTAL STUDENT BENEFITS		\$9,941,000
ECONOMIC GROWTH BENEFITS, ANNUAL*		
Labor income	NA	\$9,048,000
Non-labor income	NA	\$4,457,000
TOTAL INCOME GROWTH		\$13,505,000
SOCIAL BENEFITS, ANNUAL		
Health Benefits		
Absenteeism savings (days)	1,700	\$150,000
Fewer smokers, medical savings (# persons)	120	\$361,000
Fewer alcohol abusers (# persons)	30	\$199,000
Crime Benefits		
Incarceration savings (# persons)	15	\$123,000
Crime victim savings	NA	\$39,000
Added productivity (fewer incarcerated)	NA	\$60,000
Welfare/Unemployment Benefits		
Welfare savings (# persons)	70	\$111,000
Unemployment savings (# persons)	30	\$38,000
TOTAL SOCIAL BENEFITS		\$1,081,000

* Note: These figures are calculated using higher student earnings as the gross figure, net of student attrition and other reduction factors such as the alternative education variable and the shutdown point (see Appendices 2 and 3 for more information). Higher student earnings have already been adjusted to account for the ability bias discussed in Chapter 2.

Source: Computed from data supplied by Tables 19 and 20 in Volume 2: Detailed Results.

Economic Growth Benefits

Employers would not hire educated workers and pay higher wages if doing so were not profitable. Educated workers earn more because businesses earn more by hiring them. The students earn more because the skills learned at the college makes them more productive. Importantly, as they apply their new skills, capital (buildings, machinery and everything else) is also made more productive and profits and other property income increase.²⁷ Together, the combined labor and capital income effect might be considered the *direct income effect* of a skilled workforce.

There are also *indirect effects*. Educated workers have higher incomes and therefore more money to spend on consumer goods. At the same time the businesses that employ the higher skilled workers produce more, which in turn, requires an increase in inputs and input spending. The effect of these two spending items (consumer spending and business spending) is to increase overall income in the economy, which leads to still more spending and more income creation, and so on. The sum total of these several

²⁷ In the production process, skilled labor and capital complement each other (in technical language, they have a relatively low elasticity of substitution). Accordingly, an increase in skilled labor will increase the productivity and income of existing capital, while encouraging additional capital investment.

rounds of spending effects constitutes the indirect income effects of a skilled workforce. Estimating these indirect effects requires a specialized economic model.²⁸

The total economic growth effect of Southwestern is obtained as the sum of the direct and indirect income effects. As shown in **Table 3.1**, we estimate that a representative year of Southwestern operations annually adds about \$13.5 million in labor and non-labor income to the Southwestern Service Area regional economy.

Social Savings

Statistics on the behavioral effects of education are relatively abundant and generally indicate positive changes as incidental (or external) effects of education. Also relatively abundant are data on the social costs of behaviors, e.g., the costs of treating alcoholism or dealing with crime. By combining these data sets we are able to measure a reduction in social costs as a by-product of education. The several items of social savings shown below are all calculated in this manner—relating incremental increases in education to improved social behavior.²⁹ Additional details on our calculations and methods appear in **Volume 2: Detailed Results**.

Health-Related Savings

Table 3.1 shows annual savings from health-related issues. Health-related absenteeism from work will decline by approximately 1,700 days per year, resulting in an annual average savings of otherwise lost productivity equal to roughly \$150,000. There will also be roughly 120 fewer smokers incurring average smoking-related costs, with an annual average savings to society of some \$361,000. Finally, there will be about 30 fewer alcohol abusers, providing an annual average social savings of around \$199,000.

Crime-Related Savings

Because of a single year of Southwestern operations, we estimate that there will be some 15 fewer people incarcerated at some point in their lives, resulting in average annual savings as follows: roughly \$123,000 in direct incarceration savings, \$39,000 in savings to

²⁸ The indirect effects, sometimes called “multiplier effects,” estimated in this study rely on an input-output model, the “EMSI-IO model,” developed by Economic Modeling Specialists, Inc. of Moscow, Idaho. Details on the EMSI-IO model appear in **Appendix 5**.

²⁹ The social savings presented in this portion of the report are annual figures and do not account for out-of-state attrition that occurs over time (due to retirement, out-migration or even death). Attrition is applied in the investment analysis, which is discussed in greater detail later in this chapter. See also Table 19 in **Volume 2: Detailed Results**.

otherwise would-be crime victims, and some \$60,000 in added productivity, i.e., persons working who would otherwise be incarcerated. As before, additional details on our calculations appear in **Volume 2: Detailed Results**.

Welfare and Unemployment Savings

As shown in **Table 3.1**, one year's operation of Southwestern results in an estimated average annual reduction in people on welfare and unemployment in the State of Oregon of approximately 70 and 30 respectively. The corresponding annual dollar savings amounts to roughly \$111,000 for welfare and about \$38,000 in unemployment savings. See **Volume 2: Detailed Results** for additional detail.

Total Social Savings

All told, we estimate that a year's operation of Southwestern annually generates around \$1.1 million in public savings (avoided costs)—the sum of all health, crime, and welfare/unemployment benefits.

ANNUAL BENEFITS PER CHE AND PER FULL-TIME STUDENT

To get a different perspective on the results, the aggregate benefits reported in **Table 3.1** are expressed in **Table 3.2** on per CHE and per full-time equivalent student bases. The upper two rows of the table refer to student benefits. The remainder of the table summarizes the public benefits, with the bottom row showing total public benefits.

Table 3.2. Annual Benefits Per CHE and Per FTE Student

	Per CHE	Per FTE Student
Increased Student Earnings, gross	\$67	\$2,999
Increased Student Earnings, after tax	\$47	\$2,119
PUBLIC BENEFITS		
Income Growth	\$91	\$4,075
Absenteeism Savings	\$1	\$45
Medical Cost Savings	\$4	\$169
Incarceration Savings	\$1	\$37
Crime Victim Savings	\$0	\$12
Added Productivity	\$0	\$18
Welfare Savings	\$1	\$33
Unemployment Savings	\$0	\$12
Total	\$98	\$4,401

Note: The annualized values exclude benefits from retired students.

Source: Computed from data supplied by Table 2.3, 2.4, 3.1 and Tables 17-18 in Volume 2: Detailed Results.

As indicated in the first row, the annual average income of Southwestern students increases roughly \$67 for every hour of credit or non-credit instruction they complete. The \$67 figure is “gross earnings,” e.g., the gross figure that might appear on a student’s pay stub. The “after tax” figure is shown as \$47 – this is the figure that might appear on the student’s actual paycheck.³⁰

For the public benefits, **Table 3.2** indicates that an hour of instruction adds an average \$91 per year to regional income. The other “social benefits” shown are mainly avoided social costs. These range from \$0 per CHE in unemployment savings, to roughly \$4 per CHE from medical cost savings. All told, each hour of Southwestern instruction creates \$98 in annual public benefits.

The last column in **Table 3.2** expresses the results on a full-time-equivalent (FTE) basis. We assume that an FTE student takes the equivalent of 30 credit hours of class work per year if on a semester system and 45 credit hours of class work per year if on a quarter system. On average, a full-time year of study rewards the average Southwestern student with \$2,999 in higher annual income (before tax). It also increases regional income by \$4,075 and provides other social benefits as indicated in the table. The total of all social benefits, economic growth plus social savings, provides an annual figure of \$4,401 as shown in the bottom row of the table. These results are all annual averages of benefits that will accrue for years into the future, for at least as long as the students remain in the workforce.

WHO BENEFITS MOST FROM EDUCATION?

Who benefits most from education, the students or the public? This is a currently hotly debated question and is an obviously fundamental issue in higher education funding. The popular view in many circles is that the students benefit most, yet the results presented in **Table 3.2** would indicate otherwise. Because the money students pay in taxes does not benefit the student as such, but rather the taxpaying public, the appropriate figure for judging student benefits is increased earnings after-tax (shown in the second row in **Table 3.2**).

Total public benefits are shown in the bottom row of **Table 3.2**. The comparison can now be made: students benefit from one CHE of Southwestern attendance with a \$47

³⁰ The federal tax adjustment is based on the IRS 2005 Tax Rate Schedules. See the Internal Revenue Service, Department of the Treasury, Schedule X- Single (Available from <http://www.irs.gov/formspubs/article/0,,id=133517,00.html>; Internet; accessed 26 July 2005). The state and local share of taxes is determined using a ratio of state and local taxes divided by total earnings by place of residence.

annual increase in their after-tax earnings. At the same time, however, public benefits from that same hour of instruction sum to approximately \$91 in added annual income growth and assorted social savings per CHE. Contrary to conventional wisdom, therefore, the public stands to benefit far more from the education produced by Southwestern than the students.

THE INVESTMENT ANALYSIS: INCORPORATING FUTURE BENEFITS

The next step is to project the annual benefits into the future and discount them back to the present in accordance with standard investment analysis principles. The present values of the benefits are then compared to Southwestern costs to derive our investment analysis results. The average annual benefits generated by Southwestern (as shown in **Tables 3.1** and **3.2**) are indicative of college performance per year. To conduct the investment analysis, however, we also need the following: 1) data on the cost of instruction, both to the students and to the taxpayers, and 2) the benefits projected through time, as opposed to the single average annual figures shown above.

The investment analysis unfolds in five basic steps:

1. Annual benefits are projected into the future, normally for as long as the students remain in the workforce. This time horizon is equal to the assumed retirement age of 65, minus the average age of the student body.
2. Future benefits are discounted to reflect the so-called time-value of money.³¹
3. The discounted stream of future benefits is summed to arrive at the present discounted value.
4. The present discounted value of benefits is then compared to costs. The investment is attractive if discounted future benefits exceed the costs.
5. We also use the stream of future benefits and present-day costs to compute the payback period and an annual percentage rate of return on the investment.

³¹ Future benefits are worth less than present benefits. The present value of \$5,000 to be received thirty years from today is worth only \$1,603 given a 4% discount rate ($\$5,000 / (1.04)^{30} = \$1,603$). If the same benefits occur each year for thirty years, each year's benefit must be discounted to the present, summed and collapsed into one value that represents the cumulative present value of all future benefits. Thus, the present value of 30-years' worth of \$5,000 per year is \$90,000. We use 4% as our discount rate, assuming that this equals the return of state and local governments on outside investments, or the rate at which state and local governments can borrow funds.

Benefit/cost ratios, rates of return, and payback periods are simply alternative ways to assess the effectiveness of a given investment (see **Appendix 4** for a short primer on how to interpret these results).

Expressing the Investment Analysis Results

Economists and financial experts have different ways of expressing investment analysis results. The standard and most familiar ones are those we present here: the **net present value** (NPV) is a dollar measure of future values discounted to the present; the **internal rate of return** (IRR) is expressed as a percentage return on investment; the **benefit/cost ratio** (B/C) is a ratio of how many dollars worth of benefits are received per cost dollar; and the **payback period** is a simple calculation of how many years' worth of benefits are required to fully recover all of the investments made. The criteria for feasibility is as follows: 1) the net present value must be positive or equal to zero; 2) the rate of return must be equal to or greater than the returns from other similar risk investments; and 3) the benefit/cost ratio must be equal to or greater than 1.

The net present values, rates of return, benefit/cost ratios and payback periods are all derived from the same data shown later in this chapter in **Table 3.6**. Readers unfamiliar with the interpretation of these standard investment analysis results are encouraged to consult the short layman's guide provided in **Appendix 4** of this report: "Explaining the Results – a Primer." A glossary of terms is also provided in **Appendix 1**.

Accounting Stance and Key Definitions

Table 3.3 distinguishes between student and taxpayer costs and benefits. Students benefit from their Southwestern attendance through increased future income. They invest in the form of tuition, books and foregone income while attending (i.e., the opportunity cost of their time).³² Taxpayer costs (state and local) are straightforward; they include all direct aid to Southwestern to fund operations and capital expenditures, plus financial aid to the students. The analysis focuses on state and local government support of Southwestern, so taxpayer costs only include state and local government expenditures.

³² For purposes of the investment analysis, we consider increased student earnings (a benefit) on a gross (before tax) basis. On the other side of the benefit/cost equation, the greatest part of a students' cost is the foregone wages while attending school (i.e., the opportunity cost of time). We consider this as well on a gross (before-tax) basis. The effect on final investment results of using gross rather than net income figures should therefore be negligible.

Table 3.3. Some Definitions

Terms	Definitions
Student (Private) Benefits	Higher earnings captured by the students
Taxpayer Benefits: Broad	Additions to GSP plus lower overall expenditures related to health, crime welfare, and unemployment
Taxpayer Benefits: Narrow	Increased state and local government tax collections plus lower government expenditures related to health, crime, welfare, and unemployment
Student Costs	Tuition (see Table 2.1) plus the opportunity cost of time
Taxpayer Costs	State and local taxes (see Table 2.1), including financial aid to students
Results:	
Student Perspective	Student Benefits / Student Costs
Taxpayer Perspective: Broad	Taxpayer Benefits (Broad) / Taxpayer Costs
Taxpayer Perspective: Narrow	Taxpayer Benefits (Narrow) / Taxpayer Costs

Taxpayer benefits require some additional elaboration. As indicated in **Table 3.3**, we view taxpayer benefits from two distinctly different perspectives, “broad” and “narrow.” The aim of the broad taxpayer perspective is comprehensiveness. Under this perspective, all benefits are counted regardless of the ultimate beneficiary. Included under the broad perspective, for example, is the overall increase in regional income, the total savings from improved health and reduced crime, reduced welfare payments, productivity gains from reduced absenteeism, and so on. Under the broad perspective, all of these otherwise varied results of Southwestern operations are lumped together and counted as a benefit of state and local college support.³³

The “narrow taxpayer perspective” restricts the inclusion of benefits to those that would actually appear in the operating accounts of state and local governments. For example, whereas the broad perspective counts the total growth in regional income, the narrow perspective counts only that portion of increased regional income measured by increased state and local tax payments. Similarly, federal crimes and prison expenses are excluded from the calculation of police, prosecution, incarceration and rehabilitation savings, while savings from reduced crime victims’ costs are excluded altogether (since these strictly accrue to individuals). State and local government’s portion of total welfare expenditures is used to compute their share of welfare savings, while savings from reduced unemployment payments are excluded altogether – these programs are strictly funded by the federal government. In general, the narrow taxpayer perspective

³³ Our analysis recognizes that in some cases a level of college operations may be possible without state and local government support. Accordingly, our larger analytic framework includes a sub-model that simulates a shifting of the funding burden from state and local taxpayers to the student body. Importantly, the sub-model takes into account the inverse relationship between tuition and college attendance. Where some level of college operations is possible absent state and local government support, then that portion of overall college benefits is excluded from our analysis. See **Appendix 2** below for a detailed discussion of these adjustments.

counts only those items that actually result in a monetary gain (either added income or avoided cost) to state and local governments.

The lower part of **Table 3.3** summarizes our investment perspectives. The student perspective compares student benefits to student costs. The broad taxpayer perspective compares overall public benefits to state and local government costs, while the narrow taxpayer perspective compares strictly state and local government benefits to state and local government costs.

The Present Value of Future Benefits and Costs

Student Benefits

Table 3.4 shows the present discounted values of the annual benefits and the associated costs. The \$67 added to a student's *annual* earnings per CHE completed (from **Table 3.2**) are projected across the working life of the students and then discounted to the present. Thus, what appeared in **Table 3.2** as \$67 (the increase in a student's annual earnings for every CHE), appears in **Table 3.4** as \$1,600 – the present value of all those future income increments.

It is important to note that the present value of a benefit stream such as higher student income can be interpreted as the gross capital asset value of that income stream. Southwestern students are accordingly rewarded a capital asset valued at \$1,600 for every CHE of coursework they take. Considering all students together, the aggregate value for increased student earnings indicates that every year, as a result of their attendance at Southwestern, students acquire assets with a collective capital value of around \$231.7 million.

We now have an estimate of the students' reward for attending Southwestern. We need only compare this reward with the associated students' cost incurred today to judge whether attending school is a good investment. The cost figure is provided in the second to the last row of **Table 3.4**. The present value of the average cost of instruction per CHE is \$370 – this figure includes tuition and fees, in addition to foregone income. Comparing costs with the present value of benefits yields a student benefit/cost (B/C) ratio equal to 4.2 (equal to \$1,600 in benefits divided by \$370 in costs). We will consider this ratio and other measures of the students' investment below, but first let us consider the investment made by taxpayers.

Table 3.4. Summary of Investment Analysis Results - Present Values

	Aggregate	Per CHE
PRIVATE BENEFITS		
PV of student benefits, increased earnings	\$ 231,673,000	\$ 1,600
Sum of all private benefits, present value	\$ 231,673,000	\$1,600
PUBLIC BENEFITS		
PV of increased GSP	\$ 310,163,000	\$2,080
Health benefits, captured by society		
PV of absenteeism savings	\$ 2,255,000	\$20
PV of tobacco and alcohol abuse medical savings	\$ 8,131,000	\$50
Crime		
PV of reduced incarceration	\$ 1,781,000	\$10
PV of reduced victim costs	\$ 571,000	\$0
PV of earnings (added productivity)	\$ 907,000	\$10
Unemployment and welfare		
PV of reduced welfare rolls	\$ 1,607,000	\$10
PV of reduced unemployment	\$ 545,000	\$0
Sum of all public benefits, present value	\$ 325,960,000	\$ 2,180
COSTS, PRIVATE AND PUBLIC		
PV of opportunity cost of education plus tuition (private)	\$ 55,571,000	\$ 370
PV of state and local contribution to college budget (public)	\$ 10,995,000	\$ 70

Source: Computed from data supplied by Tables 2.1, 2.4, and Tables 19 and 20 in Volume 2: Detailed Results.

Broad Taxpayer Perspective

Table 3.4 presents a collection of data on the present discounted value of public benefits. The present value of future additions to income growth, for example, sums to some \$310.2 million. The present value of absenteeism savings sums to \$2.3 million (the aggregate of workers who remain on the job rather than taking sick leave) and so on. Altogether, the present value of all the public benefits tracked in **Table 3.4** sum to roughly \$326.0 million.³⁴

³⁴ We recognize that some level of college operation might be possible absent state and local government support (by raising tuition, for example). In arriving at the public benefits shown in **Table 3.4**, we estimate what that level of operation might be and reduce total benefits accordingly. We can, therefore, say that the benefits shown in **Table 3.4** would not occur absent state and local government support, and it is therefore proper to credit state and local government support with their creation. Specifics of the adjustment process appear in **Appendix 2**. In general, the adjustment works by reducing state and local government support by raising tuition. Studies indicate that community and technical college students are sensitive to the tuition level, so raising tuition reduces attendance. We assume 35% of current enrollment as the minimum feasible scale for college operations. At enrollments less than 35%, colleges shut down. Where colleges shut down absent state and local government support, all benefits are counted. Where a level of college operations are possible absent state and local government support, the benefits associated with that level of attendance are subtracted from the overall total (i.e., excluded from the totals indicated in **Table 3.4**).

The estimate of state and local government support of Southwestern is roughly \$11.0 million per year as shown on the bottom row of **Table 3.4**.³⁵ Having now defined the present values of the costs and the benefits, we can form a benefit/cost ratio of roughly 29.6 ($=\$326.0$ million worth of benefits / $\$11.0$ million worth of state and local government support).

This 29.6 ratio is not unexpected. It reflects the measure of all benefits generated regardless of to whom they may accrue. This is unlike the benefit/cost ratio of 4.2 for the students, for example, where the benefit/cost measure reflects benefits (higher earnings) accrued only to the students themselves divided by the student costs: tuition, fees and foregone income. For the broad taxpayer perspective, on the other hand, the benefits are received by widely dispersed publics, while the costs are borne by the taxpayers. Students are the beneficiaries of higher earnings, would-be victims of crimes are the beneficiaries of lower crime rates, still others are beneficiaries of improved health, and so on. These are widely dispersed benefits and do not return to the state and local taxpayers who pay costs at full measure. In the broad taxpayer perspective, therefore, the benefit/cost ratio simply aims at providing a ready comparison between all public benefits and taxpayer costs.³⁶

Narrow Taxpayer Perspective

With the narrow taxpayer perspective the situation is different. Here we return to the standard investment analysis because the investors and the beneficiaries are one and the same. The pivotal step here is to limit the overall public benefits shown in **Table 3.4** to those that specifically accrue to state and local government. These values are shown in **Table 3.5**. For example, **Table 3.4** shows increased regional income growth with a present value of some \$310.2 million. Increased growth means higher incomes of all kinds (wages, salaries, proprietors' incomes, profits, rents and other) and from these will come higher taxes, whether federal, state or local. In **Table 3.5** we apply prevailing state and local government tax rates to the increased incomes shown in **Table 3.4**. The computation yields a present value equal to approximately \$44.8 million in increased

³⁵ The state and local government contribution to Southwestern is listed in the tables as a present value (PV). While this is technically correct, it is important to note that, unlike the streams of benefits that go on into the future, state and local government contributions are all made in the single analysis year. Their present value and nominal dollar value are thus the same.

³⁶ Because those who benefit and those who bear the cost are not the same individuals or institutions, measures common to a standard investment analysis such as "rate of return," "payback period" "net present value" are inappropriate in the broad taxpayer perspective.

state and local tax receipts. Note also that **Table 3.5** repeats from **Table 3.4** the \$11.0 million annual contribution of state and local government to Southwestern.

Table 3.5. Present Value of Net Benefits and Costs, Narrow Taxpayer Perspective

	Aggregate	Per CHE
PV of increased state and local govt. tax receipts	\$ 44,794,000	\$300
PV of state and local govt. savings from improved health		
PV of absenteeism savings	\$ 538,000	\$0
PV of tobacco and alcohol abuse medical savings	\$ 488,000	\$0
PV of state and local govt. savings from reduced crime	\$ 1,556,000	\$10
PV of reduced welfare rolls	\$ 257,000	\$0
PV of state and local government benefits	\$ 47,633,000	\$ 320
PV of state and local contribution to college budget (public costs)	\$ 10,995,000	\$ 70

Source: Computed from data supplied by Tables 2.4, 2.1, and Tables 19 and 20 in Volume 2: Detailed Results.

With respect to the social savings, we showed in **Table 3.4** that employers would lose some \$2.3 million (present value of future losses) to health-related absenteeism were it not for our single year's state and local government support of Southwestern. Only a small fraction of these savings is counted in the narrow taxpayer perspective, however, reflecting only the portion of state and local government that benefits directly from this saving – the present value of their savings is estimated at roughly \$538,000 (**Table 3.5**). State and local government savings from reduced tobacco and alcohol abuse are computed based on overall costs multiplied by an estimate of state and local government's subsidy of general health care, for a net present value of \$488,000.

Not surprisingly, state and local government's greatest source of savings stems from the reductions in crime. **Table 3.4** shows total future savings from reduced incarceration with a present value of \$3.3 million (including victim costs and added productivity from people who would otherwise be incarcerated absent the education).³⁷ We arrive at the state and local government portion of this figure by deducting the cost of federal crimes from the incarceration savings. Added to this is the added productivity of persons not incarcerated, adjusted to include only the portion that accrues to state and local government (in this case, 14.4%, equal to the composite state and local tax rate). Victim cost savings are not counted as taxpayer benefits, since none of these accrue to the taxpayer. All told, state and local government acquires an asset in the form of reduced future incarceration expenditures and added productivity with a present value of roughly \$1.6 million.

³⁷ Recall that incarceration is defined broadly to include costs associated with police, prosecution and incarceration.

Reduced future welfare expenditures, with a present value of about \$257,000, completes our estimation of state and local government savings from Southwestern support. Combining all of the items of increased income and avoided costs in **Table 3.5** provides the total overall asset value stemming from a year's support of Southwestern. As indicated in the table, this value is roughly \$47.6 million.

We can therefore say that in return for their \$11.0 million support of Southwestern, state and local governments are annually rewarded with a stream of increased future tax payments with an equivalent capital asset value of roughly \$47.6 million. This alone yields an investment benefit/cost ratio of 4.3 ($=\$47.6 \text{ million}/\11.0 million), indicating a most profitable investment.

Summary of Investment Analysis Results

In the previous section we examined the present value of benefits attributable to Southwestern, and characterized these in terms of various benefit/cost ratios. In this investment analysis summary we consider these ratios again and augment them with two other standard investment measures: the rate of return and payback period. These are simply alternative ways of assessing the effectiveness of given investments. The investment effectiveness measures appear in **Table 3.6**.

Table 3.6. Summary of Investment Analysis Results

RR, Student Perspective	18.0%
B/C Ratio, Student Perspective	4.2
Payback Period, Student Perspective (years)	7.6
B/C Ratio, Taxpayer Perspective: Broad	29.6
RR, Taxpayer Perspective: Narrow	19.3%
B/C Ratio, Taxpayer Perspective: Narrow	4.3
Payback Period, Taxpayer Perspective: Narrow (years)	7.1

Source: Computed from data supplied by Tables 2.1, 2.4, 3.4 and 3.5.

Investment Rate of Return

The rate of return is perhaps the most recognized indicator of investment effectiveness. Given the cost of college and the stream of associated future benefits, the rate of return indicates how much a bank would have to pay a depositor of like amount to yield an equally rewarding stream of future payments.³⁸ **Table 3.6** shows Southwestern students

³⁸We compute our rates of return using the familiar "internal rate of return" calculation. Note that, with a bank deposit or stock market investment, the depositor puts up a principal, receives in return a stream of periodic payments, and then recovers the principal at the end. A college investor, on the other hand,

earning average returns of 18.0% on their investment of time and money. This is indeed an impressive return, compared, for example, to perhaps 1% on a standard bank passbook savings account, or approximately 8 to 10% on U.S. stocks and bonds (thirty-year average return).

At 19.3%, the rate of return to the state and local taxpayers is similarly impressive. Economists generally assume a 4.0% rate of return when dealing with government investments and public finance issues. This is the return governments are assumed to be able to earn on generally safe investments of unused funds, or alternatively the interest rate that governments, as relatively safe borrowers, can obtain funds for. A rate of return of 4.0% would mean that the college would just pay its own way. In principle, governments could borrow the monies used to support the college and repay the loans out of the resulting added taxes generated from higher earnings and savings from avoided social costs. A rate of return of 19.3%, on the other hand, as indicated in **Table 3.6**, means that Southwestern not only pays its own way, but also generates a significant surplus that state and local governments can use to fund other programs. It is unlikely that other government programs could make such a claim.

Discount Rate

The **discount rate** is a rate of interest that converts future costs and benefits to present values. For example, a \$1,000 higher earnings benefit to be realized 30 years in the future is worth much less than \$1,000 in the present. We must therefore express all future values in present value terms in order to compare them with the investments (i.e., the costs) made today. The selection of an appropriate discount rate, however, can become an arbitrary and controversial undertaking. As suggested in economic theory, the discount rate should reflect the investor's opportunity cost of capital, i.e., the rate of return one could reasonably expect to obtain from alternative investment schemes. If the desired end is to portray the investment as feasible and attractive, the discount rate selected is typically low. On the other hand, if the desired end is to portray the proposed investment as poor and unattractive, then the selected discount rate is high. The **4.0%** discount rate used in the CCbenefits impact study is a typical and relatively low rate often applied in public investment projects, since governments are large and can therefore spread their risks over a larger and more diverse investment portfolio than the private sector can.

Note that we refrain from calculating a rate of return for the broad taxpayer perspective. As discussed previously, the broad taxpayer perspective counts benefits to all recipients, of which state and local governments are but a part. Inasmuch as the benefits do not actually return to state and local governments, it would be misleading to compute an associated rate of return.

receives a stream of periodic payments that include the recovery of the principal as part of the periodic payments, but there is no principal recovery at the end. These differences notwithstanding, comparable cash flows for both bank and college investors will yield the same internal rate of return.

One additional note of importance: It must be understood that the returns reported in **Table 3.6** are real returns, not nominal. When a bank promises to pay a certain rate of interest on passbook savings account, it employs an implicitly nominal rate. Bonds also operate in a similar manner. If it turns out that the inflation rate is higher than the stated rate of return, then money is lost in real terms. In contrast, a real rate of return is on top of inflation. For example, if inflation is running at 3.0% and a nominal percent of 5.0% is paid, then the real rate of return on the investment is only 2.0%. In **Table 3.6**, the 18.0% student rate of return is a real rate. With an inflation rate of 3.1% (the average rate reported over the past 20 years as per the U.S. Department of Commerce, Consumer Price Index), the corresponding nominal rate of return is 21.7%, substantially higher than what we report.

Payback Period

The payback period is simply defined as the number of years it takes to entirely recoup the initial investment. Having recovered the initial investment, returns beyond that are what economists would call “pure costless rent.” As shown in **Table 3.6**, students at Southwestern on average see a payback period of 7.6 years on their foregone earnings and out-of-pocket costs, while state and local governments see a payback period of 7.1 years.³⁹

WITH AND WITHOUT SOCIAL BENEFITS

In **Chapter 2** the social benefits attributable to college education (reduced crime, welfare and unemployment, and improved health) were defined as *external benefits*, incidental to the operations of the college. Colleges do not directly aim at creating these benefits. Some would question the legitimacy of including these benefits in the calculation of the rates of return to higher education, arguing that only the direct benefits—the higher earnings—should be counted. **Table 3.6** is inclusive of the social benefits reported here as attributable to the college. Recognizing the other point of view, **Table 3.7** shows the rates of return for both the broad and narrow perspectives exclusive of the social benefits. As indicated, the returns are still well above the threshold values (a benefit/cost ratio greater than 1 and a rate of return greater than 4.0%) confirming that the taxpayers receive great value from investing in Southwestern.

³⁹ A payback analysis is generally used by the business community to rank alternative investments when safety of investments is an issue. Its greatest drawback is that it takes no account of the time value of money.

Table 3.7. Taxpayer Perspective (\$ Thousands)

	Broad Perspective With Social Savings		Narrow Perspective With Social Savings	
	Included	Excluded	Included	Excluded
NPV	\$325,961	\$310,163	\$47,633	\$44,794
IRR	-	-	19.3%	17.8%
B/C ratio	29.6	28.2	4.3	4.1
Payback (years)	-	-	7.1	7.6

Source: See Tables 3.4 through 3.6.

CONCLUSIONS

This chapter has shown that Southwestern is an attractive investment to its major stakeholders, students as well as state and local governments. The rates of return to students invariably exceed alternative investment opportunities. At the same time, state and local governments can take comfort in knowing that their expenditure of taxpayer funds creates a wide range of positive social benefits and, perhaps more importantly, actually returns more to government budgets than it costs. Absent the increased tax receipts and avoided costs provided by Southwestern education, state and local governments would have to raise taxes to make up for lost revenues and added costs.

Chapter 4

THE EFFECT OF SOUTHWESTERN ON REGIONAL ECONOMIC GROWTH

INTRODUCTION

The previous chapter considered Southwestern as an investment – first on the part of students, then on the part of state and local government. In this chapter we focus on the Southwestern Service Area and consider the impact of Southwestern on regional economic growth. We report impact estimates in terms of regional labor income (i.e., earnings) and non-labor income (i.e., the sum of all dividends, interests, and rents).⁴⁰

In general, a college will affect its local economy in two ways: 1) through its local purchases, including the wages paid to its faculty and staff, and 2) through a human capital effect stemming from an increase in the skill base of the local workforce. In our individual college studies, we have found that the second of these effects, the human capital effect, is by far the larger and more important. In this report, we adjust the college spending effect to account for taxes and other monies withdrawn from the local economy in support of Southwestern. Reasons for this adjustment are explained more fully below.

THE EFFECT OF SOUTHWESTERN OPERATIONS

Consider how college spending affects the *local* as opposed to the *state* economy. A college pays wages and these become part of overall local earnings. A portion of these direct earnings is, in turn, spent in the local economy to purchase consumer goods and services, make house and/or car payments, pay rent, and so on. At the same time, colleges purchase supplies and services of all kinds, and a portion of these direct expenditures is also made locally. Economic theory tells us that on top of any direct effect we must add an indirect effect, stemming from the action of a regional economic multiplier (see glossary in **Appendix 1**). Indirect effects capture the repeated spending and re-spending generated by the initial direct effect. The gross effect of college spending is obtained by adding together the direct and indirect effects.

⁴⁰ The sum of labor and non-labor income equals the final value of all goods and services produced, final in the sense that otherwise double-counted inter-industry sales are netted out. Alternatively, regional income reflects all factors of production, i.e., labor, land and capital. These include wages, salaries, proprietors' incomes, profits, rents and other.

To arrive at the net effect of college spending, we must first know where the revenues come from. Notice that about 55% of college funding comes from sources located outside of the Southwestern Service Area, e.g., the Federal government, state appropriations, and any private revenue from outside the region.⁴¹

The remaining 45% of college funding comes from local sources, whether in the form of student tuition and fees, local tax levies, etc. A portion of state appropriations also comes from local taxpayers.⁴² Devoting these funds to Southwestern means they are not available for other uses, e.g., consumer spending on the part of students, other government projects (or lower taxes) on the part of the local government. Monies that are injected into the regional economy on one hand are thus withdrawn on the other. The net effect is obtained by estimating these two effects separately, and then subtracting the latter from the former.

For the purposes of this report, we assume that any funding from local sources is withdrawn from the regional economy, and thus the benefits generated in return for that funding should not be counted. In the case of Southwestern, the total impact of college operations is discounted by \$3.0 million, equal to the estimated income that would have been generated in the region anyway should the local monies used to support the college had instead been used for consumer spending.

THE HUMAN CAPITAL EFFECT OF SOUTHWESTERN

Direct Effect

Students leave Southwestern and enter the workforce with newly acquired skills. They are more productive because of these skills, and their incomes go up accordingly. Moreover, skilled workers make capital more productive as well, which is why businesses are eager to hire them in the first place. The combination of these and other productivity effects constitutes the *direct economic growth effect* of Southwestern education.

⁴¹ Private sources of revenue vary widely, from a scholarship sponsored by a local resident to contract revenue received from a national company that sends its employees to the college in order to attend training seminars. The wide variety of these sources of revenues makes it difficult to determine whether they come from within or outside the region. For this reason, we assume a strict 50% breakdown, where 50% comes from outside the region, and the remaining 50% comes from within the region.

⁴² Local taxpayers must pay state taxes as well, so it is fair to assume that a certain portion of state appropriations received by the college comes from local sources. We derive this portion by applying a ratio of state taxes paid by local residents to total taxes in the state. Tax information is supplied by the U.S. Department of Commerce, Regional Economic Information System (REIS).

Indirect Effect

The growth effect of a skilled workforce does not stop with the direct effects, i.e., with the higher incomes of skilled workers and their employers. Higher incomes mean greater consumer spending, and this generates a multiple of additional economic growth effects. Moreover, the businesses employing the skilled workers are more productive, meaning they produce a larger output. This, in turn, creates the need for more inputs, which generates still another round of spending effects. The sum of these additional effects, i.e., the consumer-driven and output-driven effects, constitutes the *indirect economic growth effect* of Southwestern education.

Total Effect

The *total economic growth effect* of Southwestern education is simply the sum of the direct and indirect effects. As discussed in **Chapter 1**, the literature recognizes another effect that we omit altogether, namely, the effect of educated workers on innovation and technical progress. Because the larger part of this effect is general and spills beyond the businesses employing the skilled workers themselves, these innovation effects are generally labeled “external effects.” The general uncertainty regarding the effect of education on innovation-led economic growth has prompted us to leave these out of our analysis altogether. To the extent there are such effects, and theory suggests that there are, our overall results presented below can be considered conservative.

SUMMARY OF SPECIFIC ECONOMIC GROWTH RESULTS

Table 4.1 summarizes our economic growth results. As shown in the first row of the table, the Southwestern Service Area generated approximately \$1.2 billion in labor income, and another \$457.5 million in non-labor income.⁴³ Altogether, the Southwestern Service Area generated approximately \$1.7 billion in regional labor and non-labor income. The remainder of the table is divided into two general parts, the first showing the aggregate economic effect of Southwestern operations spending, and the second showing the human capital effects of past Southwestern students.

Southwestern Spending Effects

The section on the impact of Southwestern spending has several parts. The first row shows the total of faculty and staff wages and salaries. The figure shown there, roughly

⁴³ The figures on labor and non-labor income are from the U.S. Department of Commerce.

\$14.0 million, constitutes the direct effect of college spending on earnings. Note that the associated figure for non-labor income is \$0. This is because, in contrast to private sector businesses where profits and other property-type incomes must be considered, the direct contribution of government sectors is only measured in terms of labor income.

Indirect effects amount to another \$1.4 million. These represent the earnings generated in other industries (i.e., off-campus effects) as a result of direct college spending. The indirect effect on non-labor income is \$567,000.⁴⁴ The total effect of Southwestern spending is thus estimated at \$16.0 million in regional labor and non-labor income.

The row labeled “Adjustment for alternative use of funds” accounts for local monies spent on education that are no longer available for spending elsewhere. The negative figure shown for this entry reflects the labor and non-labor income foregone to fund education (see section labeled “The Effect of Southwestern Operations” above). Taking this adjustment into account, the net effect of college spending is \$13.0 million.

Table 4.1. Impact of Southwestern on Labor and Non-Labor Income in the Regional Economy

	Labor Income (\$ Thousands)	% of Total	Non-Labor Income* (\$ Thousands)	% of Total	TOTAL INCOME (\$ Thousands)	% of Total	Multi- pliers
Total Income in Southwestern Service Area	\$1,223,074	100%	\$457,519	100%	\$1,680,593	100%	
Income Attributable to College Operations							
Direct Effect of Faculty and Staff	\$14,000	1.1%	\$0	0.0%	\$14,000	0.8%	
Indirect Effect	\$1,444	0.1%	\$567	0.1%	\$2,011	0.1%	
Gross Total	\$15,444	1.3%	\$567	0.1%	\$16,011	1.0%	1.14
Adjustment for alternative use of funds	(\$2,128)	-0.2%	(\$841)	-0.2%	(\$2,969)	-0.2%	
TOTAL**	\$13,316	1.1%	(\$274)	-0.1%	\$13,042	0.8%	
Income Attributable to Past Student Economic Development Effects							
Direct Effect	\$131,482	10.8%	\$37,972	8.3%	\$169,455	10.1%	
Indirect Effect	\$20,778	1.7%	\$8,863	1.9%	\$29,640	1.8%	
TOTAL	\$152,260	12.4%	\$46,835	10.2%	\$199,095	11.8%	1.17
GRAND TOTAL	\$165,576	13.5%	\$46,561	10.2%	\$212,137	12.6%	

*Note: This column includes all dividends, interest, and rents generated in the Southwestern Service Area. It does not include earnings.

**Note: Negative income means that the monies spent on college support would have otherwise raised consumer spending and generated more income in the region than the college does now. The total impact of college operations is discounted accordingly.

Sources: Total income for the region is assembled from the U.S. Department of Commerce, Regional Economic Information System, CA and SA series; the U.S. Department of Commerce, County Business Patterns; and the U.S. Department of Commerce, Bureau of Labor Statistics ES-202 series. Income attributable to college operations and to past students, in addition to the associated multiplier effects, are calculated in the model based on data supplied by Southwestern. The indirect effect is based on data from Table 2.13 and outputs from the EMSI Regional IO Model for the Southwestern Service Area (Moscow, ID: Economic Modeling Specialists, Inc., 2002).

⁴⁴ Details on our regional IO model appear in **Appendix 5**. As described there, we avoid an overstatement of actual multiplier effects by discarding all but 20% of the total effect indicated by the IO model. The reduction accounts for the shift of resources from next-best uses.

The Human Capital Effect

Before we turn to the human capital effects in **Table 4.1**, it is necessary to consider the additional set of calculations shown in **Table 4.2**. The table starts with the 2.4 million estimate of total CHEs (from **Table 2.12**) embodied in the current day workforce. The next step is to reduce this figure 16.8% to account for alternative education opportunities, plus a further reduction to account for the benefits generated by Southwestern should the college still be able to operate absent state and local government support (in the case of Southwestern this reduction is 0%). The approximately 2.0 million CHEs left after this calculation can be viewed as strictly attributable to the existence of Southwestern. Finally, we multiply the 2.0 million CHEs by our estimate of the net value in added earnings per CHE (\$67 as shown in **Table 3.2**). The result, approximately \$131.5 million, is the estimated portion of current regional earnings that can be directly attributed to the Southwestern instruction embodied in the present-day workforce.

The \$131.5 million direct earnings effect from **Table 4.2** reappears in **Table 4.1** where it is shown to account for some 10.8% of all regional labor income (i.e., earnings). The associated direct effect on non-labor income is about \$38.0 million, or 8.3% of all regional non-labor income.⁴⁵ Indirect effects are shown next. As described earlier, these occur as a result of the increased consumer and business input spending associated with the direct effects. As shown in the table, indirect effects of past students account for around \$20.8 million, or 1.7%, of all regional labor income, and approximately \$8.9 million, or 1.9%, of all non-labor income. The bottom line: Southwestern accounts for \$212.1 million, or 12.6%, of all regional income in the Southwestern Service Area.

Table 4.2. Estimating the Net Regional Income Effect of Embodied CHEs

Total embodied CHEs	2,371,950
Alternative education opportunities, %	17%
Level of education possible absent state and local govt. funding, %	0%
Total CHEs, net of reduction factors	1,972,575
Gross value per CHE	\$74
Ability bias, %	10%
Net value per CHE	\$67
Gross earnings of past Southwestern students	\$175,669,864
Net earnings of past Southwestern students	\$131,482,500

Sources: Computed internally by model based on data supplied by Southwestern. See also Table 2.13. The gross value per CHE is derived from Table 3.2, without the 10% adjustment used to account for correlation-causation factors.

⁴⁵ In the course of completing this study, we gather data on the approximate industries where past students work (see **Table 2.13**). Where this information is not available, we assume a pattern that favors higher development-stage industries. The non-labor income figures in **Table 4.1** are obtained by multiplying the earnings-by-industry of past students by the associated value added-to-earnings ratios.

Chapter 5

SENSITIVITY ANALYSIS OF KEY VARIABLES

INTRODUCTION

We conclude this study with a sensitivity analysis of some key variables on both the investment and regional economic development sides. The purpose of the sensitivity analysis is twofold:

1. *To set our approach apart from “advocacy” education impact analyses that promote community and technical college education.* These studies may lack uniformity and use assumptions that will not stand up to rigorous peer scrutiny, and they often generate results that grossly overstate benefits. The approach taken here is to account for all relevant variables on both the benefit and cost sides as reflected in the conservatively estimated base case assumptions laid out in **Chapter 2**. The sensitivity tests include: a) the impacts associated with changes in the student employment variables for the investment analysis, and b) the addition of student spending and sales (as opposed to earnings only) to the regional economic development analysis.
2. *To test the sensitivity of the results associated with the assumptions for which researchers have applied judgment and innovative thinking rather than hard data.* Some may even refer to these variables as educated guesswork. They include the “Alternative Education” and “Attrition Rate” variables discussed in **Chapter 2**.

THE STUDENT EMPLOYMENT VARIABLES

Probably the most difficult data to collect are the two employment variables, because colleges generally do not collect this kind of information as a matter of formal routine. These variables include: 1) the percent of the students employed, and 2) of those employed, the earnings received by the students relative to the full earnings they would have received if not attending Southwestern. Both employment variables relate to the earnings foregone by the students – the opportunity cost of time – and they affect the investment analysis results (net present value, rate of return, benefit/cost ratio, and payback period).

Percent of Students Employed

The students incur substantial expense by attending Southwestern because of the time they spend not gainfully employed. Some of that cost is recaptured if the student remains partially (or fully) employed while attending. It is estimated that 56% of the current student body is employed. We test this variable in the sensitivity analysis by changing this assumption to 100%. This change would mean that *all* of the students are employed, reducing the average opportunity cost of time accordingly.

Percent of Earnings Relative to Full Earnings

The second opportunity cost variable is more difficult to estimate. For Southwestern it is estimated that the students working while attending classes earn only 64%, on average, of the earnings they would have statistically received if not attending Southwestern. This suggests that many of the students hold part-time jobs that accommodate their Southwestern attendance, but at an additional cost in terms of receiving a wage that is less than what they might otherwise make. The model captures these differences and counts them as a part of the opportunity cost of time. As above, we test this variable in the sensitivity analysis by changing the assumption to 100%. This would mean that the students are fully employed, and the average opportunity cost of time would be reduced accordingly.

Results

The changed assumptions (both of which would be consistent with advocacy analyses) generate the results summarized in **Table 5.1**. Here, the base case assumptions taken from **Table 2.2** are reflected in the two shaded rows for the variables tested—56% for the portion of students employed, and 64% for their earnings relative to the statistical averages. These base case assumptions are held constant in the shaded rows for the student perspective. The sensitivity analysis results are shown in the non-shaded rows—the extent to which the investment analysis results would change if the two base case variables were increased to 100%, first separately, and second, together. Changing both assumptions to 100% (all students fully employed) would automatically increase the benefits because the opportunity cost of time would reduce to zero.

1. Increasing the students employed assumption from 64% to 100% first (holding all of the other assumptions constant), the rate of return, benefit/cost ratio, and payback period results would improve to 22.2%, 5.3, and 6.4 years, respectively,

relative to the base case results. The improved results are attributable to a lower opportunity cost of time – all students would be employed in this case.

2. Increasing the earnings relative to the statistical averages from 64% to 100% second (holding the second employment assumption constant at the base case level), the rate of return, benefit/cost ratio, and payback period results would improve to 22.4%, 5.4, and 6.3 years, respectively, relative to the base case results – a strong improvement over the base case results, again attributable to a lower opportunity cost of time.
3. Finally, increasing both of the above assumptions to 100% simultaneously, the rate of return, benefit/cost ratio, and payback period results would improve yet further to 44.2%, 11.3, and 3.6 years, respectively, relative to the base case results. This scenario assumes that all students are fully employed and earning full salaries (equal to the statistical averages) while attending classes. These results are unrealistic, albeit not uncommon for advocacy analyses.

Table 5.1. Sensitivity Analysis of Student Perspective

Variables	Assumptions	RR	B/C	Payback
1. Percent Employed	56%	18.0%	4.2	7.6
	100%	22.2%	5.3	6.4
2. Percent of Earnings	64%	18.0%	4.2	7.6
	100%	22.4%	5.4	6.3
1 = 100%, 2 = 100%		44.2%	11.3	3.6

A final note to this section – we strongly emphasize that the base case results are very attractive – the results are all well above their threshold levels, and the payback periods are short. As clearly demonstrated here, advocacy results *appear* much more attractive, although they would overstate the benefits. The results presented in **Chapter 3** are *realistic*, indicating that investments in Southwestern will generate excellent returns, well above the long-term average percent rates of return of roughly 7% in the stock and bond markets.

REGIONAL ECONOMIC DEVELOPMENT

The economic impacts of higher education can be calculated in different ways. Our approach was to estimate the regional economic impacts of Southwestern based on college operations and capital spending and the increased productivity effects of past

Southwestern students in the regional workforce. The impacts are expressed in terms of regional *labor income* (i.e., earnings) and in terms of *non-labor income* (i.e., dividends, interests, and rent).⁴⁶ Others often add student spending to the impacts and express the results in terms of sales instead of income—both will substantially inflate the numerical measures of the impacts so that they appear larger than they really are. In the present section we address these two issues: 1) the addition of student spending effects to impact estimates, and 2) the expression of economic impacts in terms of regional gross sales rather than income.

The Economic Impact of Student Spending

Students spend money while attending college: they buy books and supplies, rent rooms, purchase food, pay for transportation, attend sports events, go to movies, and so on. These expenditures create jobs and incomes for local businesses, which, as argued by some, should be counted among the regional economic impacts attributable to the college.

In our analysis, however, we exclude student spending because most of the students already reside in the college region. Student expenditures, therefore, do not represent new monies in the region, but rather a redirection of monies that would have been spent anyway. The other side of the argument is that, even though the college-related spending of a resident student does not constitute new money, some students would leave the region to obtain an education elsewhere if the colleges and universities in the state were not present. Thus, the region loses the spending and related jobs and incomes. Both cases have merit, although we believe the former is more reasonable than the latter. This is because only a few students will actually be able to avail themselves of an education elsewhere (see discussion of the alternative education variable in **Chapter 2** and in **Appendix 3**). Our approach, therefore, is to exclude student spending, recognizing at the same time, that the regional impact estimates may err on the conservative side.

In **Table 5.2** we show the potential magnitude of student spending effects in the Southwestern region economy. The table parallels **Table 4.1** in the previous chapter, but

⁴⁶ U.S. Department of Commerce, Regional Economic Information System (REIS) data includes labor and non-labor income estimates for counties and states, and is published annually in the *Department's Survey of Current Business*. It is also readily available in electronic form.

adds the section “Income Attributable to Student Spending,”⁴⁷ creating some \$11.7 million in additional regional labor income for the local businesses patronized by students (the direct effects), plus another \$2.2 million in regional labor income stemming from related multiplier effects (indirect effects). The corresponding numbers for non-labor income are \$5.4 million for the direct effect, and \$901,200 for the indirect effect. As shown in the bottom row of the table, these additional measures increase Southwestern’s overall impact on regional income in the Southwestern Service Area from 12.6% in Table 4.1 to 14.0% in Table 5.2.

Table 5.2. Impact of Southwestern on Labor and Non-Labor Income in the Regional Economy

	Labor Income (\$ Thousands)	% of Total	Non-Labor Income (\$ Thousands)	% of Total	TOTAL Income (\$ Thousands)	% of Total
Total Income in Southwestern Service Area	\$1,223,074	100%	\$457,519	100%	\$1,680,593	100%
Income Attributable to Student Spending						
Direct Effect	\$11,688	1.0%	\$5,402	1.2%	\$17,090	1.0%
Indirect Effect	\$2,209	0.2%	\$901	0.2%	\$3,110	0.2%
TOTAL	\$13,897	1.1%	\$6,303	1.4%	\$20,200	1.2%
Income Attributable to College Operations						
Direct Effect of Faculty and Staff	\$14,000	1.1%	\$0	0.0%	\$14,000	0.8%
Indirect Effect	\$1,444	0.1%	\$567	0.1%	\$2,011	0.1%
Gross Total	\$15,444	1.3%	\$567	0.1%	\$16,011	1.0%
Adjustment for tax payment effects	(\$3,061)	-0.3%	(\$1,237)	-0.3%	(\$4,298)	-0.3%
TOTAL	\$12,382	1.0%	(\$670)	-0.1%	\$11,712	0.7%
Income Attributable to Past Student Economic Development Effects						
Direct Effect	\$131,482	10.8%	\$37,972	8.3%	\$169,455	10.1%
Indirect Effect	\$20,778	1.7%	\$8,863	1.9%	\$29,640	1.8%
TOTAL	\$152,260	12.4%	\$46,835	10.2%	\$199,095	11.8%
GRAND TOTAL	\$181,601	14.8%	\$52,467	11.7%	\$231,007	14.0%

Sources: Data for student spending are obtained by multiplying spending data shown in Table 5.3 by earnings-sales and value added-sales ratios determined by the EMSI Regional IO Model for the Southwestern Service Area (Moscow, ID: Economic Modeling Specialists, Inc., 2002). Data on the impact of college operations and past student productivity effects obtained from Table 4.1.

Economic Impacts Reported as Gross Sales

Advocates sometimes favor gross sales over earnings as an impact measure, because sales are always larger than the earnings. Using this as an impact measure has notable drawbacks, however. An immediate drawback is that, unlike earnings, there is generally no published total against which a sales impact can be measured. More importantly

⁴⁷ We estimated student spending effects by borrowing average college student information from a study conducted for higher education economic impacts in Illinois (University of Illinois, 2000). Student spending by broad expenditure category was bridged to the sectors of the Southwestern regional economy input-output model. Adjustments were made consistent with the model’s regional accounts to allow for spending leakages.

though, the most troublesome aspect of gross sales impact measures is captured in the following example:

Two visitors spend \$50,000 each in the economic region. One visits a local auto dealer and purchases a new luxury automobile. The other undergoes a medical procedure at the local hospital. In terms of direct economic impact, both have spent \$50,000. However, the expenditures will likely have very different meanings to the local economy. Of the \$50,000 spent for the luxury automobile, perhaps \$10,000 remains in the county as salesperson commissions and auto dealer income (part of the economic region's overall earnings), while the other \$40,000 leaves the area for Detroit or somewhere else as wholesale payment for the new automobile. Contrast this to the hospital expenditure. Here perhaps \$40,000 appears as physician, nurse, and assorted hospital employee wages (part of the county's overall earnings), while only \$10,000 leaves the area, to pay for hospital supplies, or to help amortize building and equipment loans. In terms of sales, both have the same impact, while in terms of earnings, the former has one-fourth the impact of the latter.

Table 5.3 expresses the Southwestern impacts in terms of gross sales rather than income. Note that gross sales measures are everywhere larger than income. The economy-wide measure of total gross sales estimated by the economic model is \$4.4 billion.⁴⁸ Direct local spending by students reflects their total spending, reduced by the estimated portion that leaks out-of-region to purchase goods produced elsewhere.⁴⁹ In the usual fashion, indirect effects reflect the action of local economic multiplier effects, also estimated by the economic model.

Direct local expenditures include all spending by the college (i.e., for consumer items), excluding faculty and staff wages and salaries. Both items are reduced to reflect purchases from outside the region. All told, the operation of Southwestern is estimated to explain some \$560.2 million in regional gross sales, a number substantially larger than the \$231.0 million explained by the college in regional income shown in **Table 5.2**.

While the gross sales impacts shown in **Table 5.3** are not incorrect, we prefer to report college impacts in terms of income (**Table 4.1**) rather than gross sales, because they reflect the economic realities in the local community much more accurately. Advocacy studies, on the other hand, will often opt to express the results in terms of sales because

⁴⁸ Simply stated, economy-wide gross sales are obtained by multiplying sector-specific regional earnings by a national estimate of sales-to-earnings.

⁴⁹ Students purchase gasoline for their cars, for example, and while the trade margin stays in the area, in most cases the producer price of gasoline itself will leak out to the oil-producing region.

the numbers are much more impressive. Such results, however, will likely not stand up to rigorous peer scrutiny in the economics profession.

Table 5.3. Impact of Southwestern on Sales in the Regional Economy

	Gross Sales (\$ Thousands)	% of Total
Total Gross Sales in Southwestern Service Area	\$4,396,123	100%
Gross Sales Attributable to Student Spending		
Direct Local Spending by Students	\$30,671	0.7%
Indirect Spending Effect	\$7,220	0.2%
TOTAL	\$37,891	0.9%
Gross Sales Attributable to College Operations		
Direct Local Spending of Southwestern	\$6,900	0.2%
Indirect Spending Effect	\$2,593	0.1%
TOTAL	\$9,493	0.2%
Gross Sales Attributable to Past Student Economic Development Effects		
Direct Gross Sales	\$440,836	10.0%
Indirect Gross Sales	\$71,950	1.6%
TOTAL	\$512,787	11.7%
GRAND TOTAL	\$560,170	12.7%

Merriman, Susan Hartter, and eds, Illinois Higher Education (Springfield, IL: IBHE, University of Illinois, 2000), applied to the EMSI Regional IO Model for the Southwestern Service Area (Moscow, ID: Economic Modeling Specialists, Inc., 2002). Data for the direct effect of college operations on sales are obtained from Southwestern, while the indirect effect is calculated through the application of multipliers determined by the regional IO model. Direct and indirect past student effects are derived using earnings data from Table 4.1, multiplied by sales-earnings ratios from the EMSI IO model.

VARIABLES REQUIRING “JUDGMENT”

The sensitivity analysis is a simple tool often used to determine “switching” values, which occur when the investment results turn from positive to negative, or from attractive to non-attractive as the assumptions are varied up and down. If the results change dramatically with only a small variation in the assumption, then that assumption is sensitive. If the results do not change much, the assumption is not sensitive, and minute accuracy in its specification is less important. The sensitivity analysis is also used to demonstrate how some results become unrealistic when advocacy assumptions are invoked.

Two variables have consistently raised concerns among institutional researchers, since neither can be specified on the basis of hard data collected regularly by the college. These are the “Attrition Rate” and the “Alternative Education Opportunity” variables, discussed in detail in Tables 2.2 and 2.10, respectively. Recall from Chapter 2 that the attrition rate (33% in Table 2.2) characterizes the mobility of the exiting students out of the region over the next thirty years or so through retirement, out-migration and/or

death. The alternative education opportunity variable (16.8% in **Table 2.10**) is characterized as a “negative benefit” – the taxpayer benefits are reduced by the percent indicated to account for the portion of the current student body who could obtain a similar education elsewhere, absent the publicly funded colleges and universities in the state. In earlier studies that we conducted, we regularly asked the institutional researchers at the individual colleges to provide an estimate of this variable, but due to the cumbersome nature of the process involved, we later internalized the alternative education variable to the analytical model. **Appendix 3** provides a detailed explanation of the method used to derive this variable.

Given the nature of the “Attrition Rate” and the “Alternative Education Opportunity” variables and the difficulty in accurately specifying them, the obvious question is: how great a role do they play in the magnitudes of the results? The results are presented in the sensitivity analysis in **Table 5.4**.

Table 5.4. Sensitivity Analysis of Alternative Education and Attrition Rate Variables (\$ Thousands)

	-75%	-50%	-25%	Base Case	25%	50%	75%	
Alternative Education Variable	4.2%	8.4%	12.6%	16.8%	21.0%	25.3%	29.5%	
<i>Narrow Taxpayer Perspective</i>								
Investment results	NPV	\$43,871	\$41,460	\$39,049	\$36,638	\$34,227	\$31,816	\$29,405
	RR	21.8%	21.0%	20.1%	19.3%	18.4%	17.6%	16.7%
	B/C ratio	5.0	4.8	4.6	4.3	4.1	3.9	3.7
	Pay Back	6.3	6.6	6.8	7.1	7.3	7.6	8.0
Attrition Rate Variable	-75%	-50%	-25%	Base Case	25%	50%	75%	
<i>Regional Economic Development</i>	8.3%	16.5%	24.8%	33%	41.3%	49.5%	57.8%	
Labor Income Attributable to Southwestern	\$242,424	\$232,708	\$222,633	\$212,137	\$201,134	\$189,509	\$177,093	
% of Total Labor Income in Region	14.4%	13.8%	13.2%	12.6%	12.0%	11.3%	10.5%	
Credits Embodied in the Workforce	2,732,782	2,617,032	2,497,005	2,371,950	2,240,865	2,102,367	1,954,450	

Alternative Education Opportunity

Variations in the Alternative Education assumption are calculated around the base case assumptions listed in the middle column of **Table 5.4** for the taxpayer perspective results (the variable does not affect the student investment analysis results). The net present value, rate of return, benefit/cost ratio, and payback results listed in the base case column were all presented and discussed in **Chapter 3**. Next, we bracket the base case assumption on either side with plus or minus 25%, 50% and 75% variation in the assumptions. The analyses are then redone introducing one change at a time, holding all the other variables constant. For example, an increase of 25% in the Alternative Education assumption (from 16.8% to 21.0%) will reduce the narrow taxpayer

perspective rate of return from 19.3% to 18.4%. Likewise, a decrease of 25% (from 16.8% to 12.6%) in the assumption will generate an increase in the rate of return from 19.3% to 20.1%.

Based on this sensitivity analysis, the conclusion can be drawn that the Southwestern investment analysis results from the narrow taxpayer perspective are not very sensitive to relatively large variations in the Alternative Education variable. As indicated, the results are still well above their threshold levels (net present value greater than 0, benefit/cost ratio greater than 1, and rate of return greater than the discount rate of 4.0%) even when the Alternative Education assumption is increased by as much as 75% (from 16.8% to 29.5%). The conclusion is simply that, although the assumption is difficult to specify, its impact on the overall investment analysis results for the narrow taxpayer perspective is not very sensitive.

Attrition Variable

The attrition rate variable only affects the regional economic development results (**Table 4.1**). As above, we increase and decrease the assumption relative to the base case assumption of 33% (from **Table 2.2**) by the increments indicated in the table. The impacts on the results are more pronounced, as indicated in **Table 5.4**. Labor income attributable to the college, for example, ranges from a high of \$242.4 million at -75% to a low of \$177.1 million at a 75% variation from the base case assumption for this variable. This means that if the attrition of the ex-students over time increases, the number of CHEs embodied in the current local workforce decreases; hence, the labor income attributable to the college decreases accordingly.

RESOURCES AND REFERENCES

- Anderson, D.A. "The Aggregate Burden of Crime." *Journal of Law and Economics* XLII 2 (October 1999): 611-642.
- Beck, Allen J. and Paige M. Harrison. *Prisoners in 2000*. Washington, D.C.: U.S. Department of Justice, Bureau of Justice Statistics, August 2001. NCJ 188207.
- Becker, Gary S. *Human Capital: A Theoretical Analysis With Special Reference to Education*. New York: Columbia University Press for NBER, 1964.
- Bils, M. and P.J. Klenow. "Does Schooling Cause Growth?" *American Economic Review* 90 no. 5 (2000): 1160-1183.
- Bonczar, Thomas P. and Alan J. Beck. *Lifetime Likelihood of Going to State or Federal Prison*. Washington, D.C.: U.S. Department of Justice, Bureau of Justice Statistics, March 1997. NCJ 160092.
- Borts, G. H., and J. L. Stein. *Economic Growth in a Free Market*. New York: Columbia University Press, 1964.
- Bureau of Justice Statistics. "Table 1: State (1) average annual pay for 2000 and 2001 and percent change in pay for all covered workers (2)." Criminal Justice Expenditure and Employment Extracts Program (CJEE). Washington D.C.: U.S. Department of Labor, 2000.
- _____. Survey of Inmates in Local Jails, 2002. "Length of sentence and time expected to be served of inmates sentenced to jail, by offense, 2002." *BJS On-line*. Home page on-line. Available from <http://www.ojp.usdoj.gov/bjs>; Internet; accessed 5 July 2004.
- Centers for Disease Control and Prevention. "Table 2. Annual smoking-attributable economic costs for adults and infants – United States, 1995 – 1999" in "Annual Smoking-Attributable Mortality, Years of Potential Life Lost, and Economic Costs – United States, 1995 – 1999." *MMWR Weekly* 51, no. 4 (April 12, 2002): 300-303.
- CCH Incorporated. "Employee absenteeism rises slightly, while employers still struggle with high cost of 'sick time.'" *CCH Online*. Home page on-line. Available from <http://www.cch.com/press/news/2001/20011023h.asp>; Internet; accessed April 2004.
- Christaller, Walter. *Central Places in Southern Germany*. Translated by C.W. Baskins. Englewood Cliffs, NJ: Prentice-Hall, 1966.

RESOURCES AND REFERENCES

- Christophersen, Kjell A. and M. Henry Robison. "The Socioeconomic Benefits of Community Colleges, Illustrated with Case Studies of Everett Community College and Walla Walla Community College in Washington State." Volume 1: Summary Report. EMSI, Consulting Economists. Moscow, ID: by the authors, 2000.
- Committee on Ways and Means. *2000 Ways and Means Green Book*, 17th ed. Washington D.C.: U.S. House of Representatives, October 2000.
- Drake, R. L. "A Shortcut to Estimates of Regional Input-Output Multipliers: Methodology and Evaluation." *International Regional Science Review* 1 no. 2 (Fall 1976).
- Economic Modeling Specialists, Inc. Regional Input-Output Modeling System (data and software). Moscow, ID: 2002. Database on-line. Available from <http://www.economicmodeling.com>; Internet.
- Fujita, Masahisa, Paul Krugman, and Anthony J. Venables. *The Spatial Economy: Cities, Regions, and International Trade*. Cambridge: Massachusetts Institute of Technology, 1999.
- Governor's Office of Planning and Budget, Demographic and Economic Analysis Section, and Consulting Economists. "The Base Period 1992 Utah Multiregional Input-Output (UMRIO-92) Model: Overview, Data Sources, and Methods." Utah State and Local Government Fiscal Impact Model, Working Paper Series 94-1. Salt Lake City, UT: Demographic and Economic Analysis (DEA), June 1994.
- Grubb, W. Norton. *The Economic Benefits of Sub-Baccalaureate Education: Results from National Studies*. CCRC Brief No. 2, ISSN 1526-2049. New York, NY: Community College Research Center, June 1999.
- Hamilton, J. R., N. K. Whittlesey, M. H. Robison, and J. Ellis. "Economic Impacts, Value Added and Benefits in Regional Project Analysis." *American Journal of Agricultural Economics* 31 no. 2 (1991): 334-344.
- Harrison, Paige M. and Allan J. Beck. "Number of persons held in state or federal prison or in local jails, 1995-2004." Bureau of Justice Statistics, National Prisoner Statistics. *BJS On-line*. Homepage on-line. Available from <http://www.ojp.usdoj.gov/bjs>; Internet; accessed 24 April 2005.
- Health Care Financing Administration. *A Profile of Medicaid: Chartbook 2000*. Washington, D.C.: U.S. Department of Health and Human Services, September 2000.
- Henderson, James M. and Richard E. Quandt. *Microeconomic Theory: A Mathematical Approach*. New York: McGraw-Hill Book Company, 1971.

RESOURCES AND REFERENCES

- Hughes, Timothy, et al. "State prison admissions 2001: Sentence length by offense and admission type." Bureau of Justice Statistics, National Corrections Reporting Program, 2001.
- Internal Revenue Service, Department of the Treasury. Schedule X- Single. Home page on-line. Available from <http://www.irs.gov/formspubs/article/0,,id=133517,00.html>; Internet; accessed 26 July 2005.
- Kerka, Sandra. "Prison Literacy Programs. ERIC Digest No. 159." 1995. Database on-line. Available from ERIC, ED383859.
- Labor Market Reporter. "U.S. Employee Absences by Industry: 1997." *The Public Purpose*. Home page on-line. Available from <http://www.publicpurpose.com/lm-97abs.htm>; Internet; accessed 30 September 2001.
- _____. "U.S. Employee Absences by Industry Ranked: 1997," *The Public Purpose*. Home page on-line. Available from <http://www.publicpurpose.com/lm-97absr.htm>; Internet; accessed 30 September 2001.
- Losch, August. *The Economics of Location*. Translated by W. H. Woglom and W. F. Stolper. New Haven: Yale University Press, 1954.
- Miller, Ron and Peter Blair. *Input-Output Analysis: Foundations and Extensions*. Englewood Cliffs, NJ: Prentice Hall, 1985.
- Miller, Ted R., Mark A. Cohen, and Brian Wiersema. *Victim Costs and Consequences: A New Look*. National Institute of Justice Research Report. Washington, D.C.: U.S. Department of Justice, National Institute of Justice, January 1996. NCJ 155282.
- Mincer, Jacob. "Investment in Human Capital and Personal Income Distribution." *Journal of Political Economy* (1958): 281-302.
- Mincer, Jacob. *Schooling, Experience and Earnings*. New York: National Bureau of Economic Research, 1974.
- Minnesota IMPLAN Group, Inc. IMPLAN System (data and software). Stillwater, MN, annual. Database on-line. Available from <http://www.implan.com>; Internet.
- Molitor, Chris and Duane Leigh. "Estimating the Returns to Schooling: Calculating the Difference Between Correlation and Causation." Pullman, WA: by the authors, March 2001.

RESOURCES AND REFERENCES

National Center for Chronic Disease Prevention and Health Promotion. Behavioral Risk Factor Surveillance System, *CDC Online*. Home page on-line. Available from <http://www.cdc.gov/brfss/>; Internet; accessed 30 September 2001.

_____. Office on Smoking and Health. *CDC Online*. Home page on-line. Available from <http://www.cdc.gov/tobacco/mission.htm>; Internet; accessed September 2003.

National Center for Education Statistics. *Digest of Education Statistics, 2000*. Washington D.C, U.S. Department of Education, 2000. Database on-line. Available from <http://nces.ed.gov/pubs2001/digest/foreword.asp>; Internet.

_____. *Literacy Behind Prison Walls*. Washington, D.C.: U.S. Department of Education, October 1994.

National Center for Health Statistics. Centers for Disease Control and Prevention, Division of Data Services. Hyattsville, MD, 2000. Database on-line. Available from <http://www.cdc.gov/nchs/>; Internet.

_____. "1990 National Health Interview Survey." *ICPSR Online*. Home page on-line. Available from <http://www.icpsr.umich.edu:8080/ICPSR-STUDY/09839.xml>; Internet; accessed February 2001. ICPSR No. 9839.

_____. "Table 60. Current cigarette smoking by persons 18 years of age and over according to sex, race, and age: United States, selected years 1965-1999." in *Health, United States, 2004*. Hyattsville, MD, 2004.

_____. "Table 61. Age-adjusted prevalence of current cigarette smoking by persons 25 years of age and older, according to sex, race, and education: United States, selected years 1974-1999." in *Health, United States, 2004*. Hyattsville, MD, 2004.

National Clearinghouse for Alcohol and Drug Information. *Prevention Online*. Home page on-line. Available from <http://www.health.org>; Internet.

National Institute for Literacy. "Correctional Education Facts." *NIFL Online*. Home page on-line. Available from http://www.nifl.gov/nifl/facts/facts_overview.html; Internet; accessed 18 March 2001.

National Institute of Alcohol Abuse and Alcoholism. "Percent reporting alcohol use in the past year by age group and demographic characteristics: NHSDA, 1994-97." August 1999. Database on-line. Available from <http://www.niaaa.nih.gov/databases/dkpat3.htm>; Internet.

RESOURCES AND REFERENCES

- National Institute on Drug Abuse. *The Economic Costs of Alcohol and Drug Abuse in the United States – 1992*. Bethesda, MD: National Institute of Health, 1998. NIH Publication Number 98-4327.
- Nephew, Thomas M., Gerald D. Williams, and Frederick Stinson, eds. *Surveillance Report #55: Apparent Per Capita Alcohol Consumption: National, State and Regional Trends, 1977-98*. Rockville, MD: National Institute on Alcohol Abuse and Alcoholism, Division of Biometry and Epidemiology, December 2000.
- Office of International Criminal Justice (OICJ). "The Extent and Costs of Victimization, Crime and Justice," *The Americas* 8 no.6 (Dec-Jan 1995).
- Parr, J.B. "Regional Economic Development: An Export-Stages Framework," *Land Economics* 77 no. 1 (1999): 94-114.
- Rector, Robert. *Means-Tested Welfare Spending: Past and Future Growth*. Heritage Foundation, Policy Research and Analysis, March 2001. Database on-line. Available from <http://www.heritage.org/Research/Welfare/Test030701b.cfm>; Internet.
- Resek, Robert W., David F. Merriman, Susan R. Hartter, and eds. *Illinois Higher Education: Building the Economy, Shaping Society*. Springfield, IL: Illinois Board of Higher Education, University of Illinois, 2000.
- Robison, M. H. "Community Input-Output Models for Rural Area Analysis: With an Example from Central Idaho." *Annals of Regional Science* 31 no. 3 (1997): 325-351.
- _____, R. Coupal, N. Meyer, and C. C. Harris. *The Role of Natural-Resource-Based Industries in Idaho's Economy*. University of Idaho, College of Agriculture Bulletin 731. Moscow, ID: University of Idaho, College of Agriculture, 1991.
- _____. "The Oregon Economic Modeling System (OREMS): A Tool for Analyzing Changes in Jobs, Incomes, and the Spatial Structure of the Oregon Economy." Missoula, MT: 29th Annual Pacific Northwest Economic Conference, May 1995.
- Rutgers, State University of New Jersey, et . "The Impact of EDA RLF Loans on Economic Restructuring." Paper prepared for U.S. Department of Commerce, Economic Development Administration. New Brunswick: Rutgers State University of New Jersey, 2002.
- Social Security Bulletin. "Table 9.G2: Average monthly number of families and recipients of Temporary Assistance for Needy Families and total amount of assistance, by state or other area, 2003" in "Annual Statistical Supplement, 2004." *Social Security Bulletin*

RESOURCES AND REFERENCES

Online. Database on-line. Available from <http://www.ssa.gov/policy/docs/statcomps/supplement/2004/>; Internet; accessed 1 June 2005.

Steurer, Stephen J. , Linda Smith, and Alice Tracy. "Three State Recidivism Study." Paper submitted to the Office of Correctional Education, United States Department of Education. Lanham, MD: Correctional Education Association, September 2001.

Stevens, B. H., G. I. Treyz, D. J. Ehrlich, and J. R. Bower. "A New Technique for the Construction of Non-Survey Regional Input-Output Models." *International Regional Science Review* 8 no. 3 (1983): 271-186.

Tanner, Michael, Stephen Moore, and David Hartman. *The Work Versus Welfare Trade-Off: An Analysis of the Total Level of Welfare Benefits by State*. Policy Analysis No. 240. Washington D.C.: Cato Institute, September 1995. Database on-line. Available from <http://www.cato.org/pubs/pas/pa240es.html>; Internet.

Temporary Assistance for Needy Families (TANF) Program. "Table 12: Percent distribution of TANF adult recipients by race, October 1997 – September 1998" in *Characteristics and Financial Circumstances of TANF Recipients, Fiscal Year 1998*. Washington D.C.: U.S. Department of Health and Human Services, May 1999.

_____. "Table 17: Percent distribution of TANF adult recipients by educational level, October 1997 – September 1998" in *Characteristics and Financial Circumstances of TANF Recipients, Fiscal Year 1998*. Washington D.C.: U.S. Department of Health and Human Services, May 1999.

Tobacco Institute. *The Tax Burden on Tobacco*. Historical Compilation Volume 32, 1997. Home page on-line. Available at <http://www.tobaccoinstitute.com/getallimg.asp?if=avtidx&DOCID=TCAL0404218/4236>; Internet; last accessed April 2004.

U.S. Census Bureau and Bureau of Labor Statistics. Current Population Survey. Database on-line. Available from <http://www.bls.census.gov/cps/>; Internet.

_____. "Fact Sheet." *American FactFinder*. Home page on-line. Available from http://factfinder.census.gov/servlet/SAFFacts?geo_id=&_geoContext=&_street=&_county=&_cityTown=&_state=&_zip=&_lang=en&_sse=on; Internet; accessed April 2004.

_____. Historical Income Data. Database on-line. Available from <http://www.census.gov/hhes/income/histinc/histinctb.html>; Internet.

_____. Housing and Household Economic Statistics Division. Database on-line. Available from <http://www.census.gov/hhes/www/>; Internet.

RESOURCES AND REFERENCES

- _____. Income Surveys Branch/HHES Division. "Median for 4-Person Families, by State." October 2003. Database on-line. Available from <http://www.census.gov/hhes/income/4person.html>; Internet.
- _____. *Money Income in the United States 1998*. Current Population Reports. Washington, D.C.: U.S. Department of Commerce, Economics and Statistics Administration, 1999.
- _____, Population Division. "Table ST-EST2002-01 - State Population Estimates: April 1, 2000 to July 1, 2002." December 2002. Database on-line. Available from <http://eire.census.gov/popest/data/states/tables/ST-EST2002-01.php>; Internet.
- _____. "Table 1. Educational Attainment of the Population 15 Years and Over, by Age, Sex, Race, and Hispanic Origin" in *Educational Attainment in the United States, March 2000*. December 2000. Database on-line. Available from <http://www.census.gov/population/www/socdemo/education/p20-536.html>; Internet.
- _____. "Table P-3. Race and Hispanic Origin of People by Mean Income and Sex: 1947 to 2000." September 2002. Database on-line. Available from <http://www.census.gov/hhes/income/histinc/p03.html>; Internet.
- _____. "Table P-18. Educational Attainment – People 25 Years Old and Over by Mean Income and Sex: 1991 to 2000." September 2002. Database on-line. Available from <http://www.census.gov/hhes/income/histinc/p18.html>; Internet.
- U.S. Department of Commerce. County Business Patterns. [CD-ROM], annual.
- _____. Bureau of Economic Analysis: REIS, County data. [CD-ROM], annual.
- _____. Bureau of Economic Analysis: REIS, Employment and Earnings Reports, 2001.
- _____. Bureau of Economic Analysis: REIS, Zip Code Business Patterns. [CD-ROM], annual.
- _____. Statistical Abstract of the United States. [CD-ROM], annual.
- U.S. Department of Health and Human Services. Centers for Medicare and Medicaid Services, 2003 Data Compendium. *HHS On-line*. Database on-line. Available from <http://www.cms.hhs.gov/researchers/pubs/datacompendium/current/>; Internet; accessed 1 June 2005.

RESOURCES AND REFERENCES

- _____. Appendix A in "Indicators of Welfare Dependence: Annual Report to Congress, 2003." *HHS On-line*. Database on-line. Available from <http://aspe.hhs.gov/hsp/indicators03/index.htm>; Internet; accessed 1 June 2005.
- U.S. Department of Justice, Office of Justice Programs. Bureau of Justice Statistics Bulletin. Table 1 in "Justice Expenditures and Employment in the United States, 2001." May 2004.
- U.S. Department of Labor. Bureau of Labor Statistics. *BLS Online*. Home page on-line. Available from <http://www.bls.gov/>; Internet; accessed April 2004.
- _____. Bureau of Labor Statistics. Current Population Survey. *BLS On-line*. Database on-line. Available from <http://www.bls.gov/cps>; Internet.
- _____. Bureau of Labor Statistics. Employment and Training Administration, Unemployment Insurance Data Summary. *DOL On-line*. Database on-line. Available from <http://workforcesecurity.doleta.gov/unemploy/content/data.asp>; Internet; accessed 1 June 2005.
- _____. Bureau of Labor Statistics. ES-202 series (Covered Employment and Wages program).
- _____. Bureau of Labor Statistics. Office of Employment and Unemployment, *BLS Online*. Home page on-line. Available from <http://www.bls.gov/bls/proghome.htm#OEUS>; Internet.
- _____. Bureau of Labor Statistics. "Table 1. State (1) average annual pay for 2000 and 2001 and percent change in pay for all covered workers (2)." Washington, D.C.: U.S. Department of Labor, 2001. Database on-line. Available from <http://www.bls.gov/news.release/annpay.t01.htm>; Internet.
- _____. Bureau of Labor Statistics. "Table 46. Absences from work of employed full-time wage and salary workers by age and sex" in the Current Population Survey. *BLS On-line*. Database on-line. Available from <http://www.bls.gov/cps>; Internet; accessed 20 June 2005.
- U.S. Department of Treasury. "The Economic Costs of Smoking in the United States and the Benefits of Comprehensive Tobacco Legislation." Database on-line. Available from <http://www.treas.gov/press/releases/report3113.htm>; Internet; accessed April 2004. Report-3113.
- Willis, Robert J. "Wage Determinants: A Survey and Reinterpretation of Human Capital Earnings Functions." In *Handbook of Labor Economics, Vol. 1*. Edited by Kenneth J. Arrow and Michael D. Intriligator. Amsterdam: Elsevier Science Publishers, 1986: 525-602.

RESOURCES AND REFERENCES

Woods and Poole Economics, Inc. W&P System (data and CD-ROM). Washington, D.C., 2000. Database on-line. Available from <http://woodsandpoole.com>; Internet.

APPENDIX 1: GLOSSARY OF TERMS

<i>Alternative education</i>	The alternative education variable is a “with” and “without” measure. It is a measure of the percent of students who would still be able to avail themselves of alternative education opportunities absent the publicly funded colleges and universities in the state. An estimate of 20%, for example, means that 20% of the students do not depend directly on the existence of the college in order to obtain their education. We then back 20% out of the impact calculations.
<i>Asset Value</i>	The asset value is the capitalized value of a stream of future returns. It is the measure of what you would have to pay today for an instrument that provides the same stream of future revenues.
<i>Attrition rate</i>	An attrition (decay) rate of students is applied to benefits occurring in the future. The rate refers to the fact that not all students remain in the local region once exiting the college, but some will out-migrate, retire, or die. This rate is either estimated by the college institutional researchers, or it is derived from the literature as a default value if the variable cannot be estimated by the college.
<i>Benefit/cost ratio</i>	The benefit/cost ratio separately discounts the flow of benefits and costs over time to the present and then divides the sum of the discounted benefits by the sum of the discounted costs. If the benefit/cost ratio is greater than one, then the benefits exceed costs and the investment is feasible. For every dollar expended we get more than one dollar back. This, however, does not necessarily mean that the investment is the best one. There are many feasible projects but only one optimal one. We must compare between investments – the higher the benefit/cost ratio, the more attractive the project.
<i>Demand</i>	The demand for education describes the relationship between the market price of education and the volume of education demanded

(expressed in terms of enrollment). The law of the downward-sloping demand curve is related to the fact that enrollment increases only if the price (tuition and fees) is lowered, or conversely, enrollment decreases if the price (tuition and fees) increases.

Discounting

Discounting is the process of expressing future revenues and costs in present value terms. The discount rate converts future revenues into present values so they can be compared to costs incurred in the present.

Economics

Economics is the study of the allocation of scarce resources among alternative and competing ends. Economics is not normative (what *ought* to be done), but positive (describes *what is*, or how people are likely to behave in response to economic changes). Allocation of resources is the key focus of economics. Taxpayer dollars, for example, are scarce and there will be competing uses and pressures. Taxpayers vote to tax themselves in order to fund transportation, the health sector, education, and/or other priorities. They have choices and must allocate between them.

Elasticity of demand

In this report, the elasticity of demand refers to the degree of responsiveness of the quantity of education demanded (enrollment) to changes in market prices (tuition and fees). If a decrease in tuition increases total revenues, the demand is elastic. If it decreases total revenues, the demand is inelastic. If total revenues remain the same, the elasticity of demand is said to be unitary.

Externalities

Externalities (positive and negative) occur when impacts are generated for which there is no compensation. Hillside logging, for example, may create a negative externality because of erosion that lowers the productivity of downstream farms, but the logger does not compensate the farmers. For community and technical colleges, positive external benefits could be improved social behaviors manifested in lower crime, reduced welfare and unemployment, and improved health. Colleges cannot take direct credit, nor do they receive compensation for these manifestations,

but the benefits still occur by virtue of the fact that the colleges exist and that the higher education they provide ultimately leads to improved social behaviors.

Gross State Product

The gross state product (GSP) is a measure of the final value of all goods and services produced. Alternatively, GSP equals the combined incomes of all factors of production, i.e., labor, land and capital. These include wages, salaries, proprietors' incomes, profits, rents and other.

Input-output analysis

Input-output analysis is a branch of economics that addresses production relationships in an economy. In particular, it refers to the relation between a given set of demands for final goods and services, and the implied amounts of manufactured inputs, raw materials, and labor this requires. In an educational setting, as colleges pay wages and salaries and spend money for supplies in the local economic region, they also generate earnings in all of the sectors of the economy, thereby increasing the demand for goods and services and jobs. Moreover, as the students enter or rejoin the workforce with higher skills obtained at the colleges, they also earn higher salaries and wages. In turn, this generates more consumption and spending in other sectors of the economy, subject to the familiar multiplier effect (see below).

Internal rate of return

The internal rate of return (IRR) is the rate of interest which, when used to discount the cash flows associated with investing in education, reduces its net present value to zero (i.e., where the present value of the revenues accruing from the investment are just equal to the present value of the costs incurred). This, in effect, is the breakeven rate of return on the investment since it shows the highest rate of interest at which the investment makes neither a profit nor a loss. IRR results are expressed as a percentage.

Multiplier

Multipliers are a measure of the overall regional earnings per dollar of earnings at the community or technical college (i.e., per dollar of college faculty and staff earnings). In our context, the multiplier can be defined as the total of on- and off-campus

earnings divided by on-campus earnings. Multiplier effects are the result of in-area spending by the college on locally supplied goods and services, and of the local everyday spending of college faculty and staff. We also include in the off-campus portion of the multiplier the added regional earnings attributable to past-students still active in the local labor force. The regional economy is larger because of the skills of these past students, and because of the added spending associated with their higher incomes, and from spending associated with the enlarged output of the industries where these past students are employed.

Net cash flow

The net cash flow (NCF) is benefits minus costs, i.e., the sum of the revenues accruing from an investment minus the costs incurred.

Net present value

The net present value (NPV) is the net cash flow discounted to the present. All future cash flows are, in this way, collapsed into one number, which, if positive, indicates feasibility. The result is expressed as a monetary measure. If the net present value is positive, we have done better than alternative investment schemes, all else being equal.

Opportunity cost

The opportunity cost comprises the benefits foregone from alternative B once a decision is made to allocate resources to alternative A. Or, if an individual chooses not to attend college, he or she foregoes the higher future earnings associated with higher education. The benefit of higher education, therefore, is the "price tag" of choosing not to attend college.

Payback Period

This is a measure of the period of time required to recover an investment – the shorter the period, the more attractive the investment. The formula for computing payback period is:

Payback period = cost of investment/net return per period

APPENDIX 2: ADJUSTING FOR THE BENEFITS AVAILABLE ABSENT STATE AND LOCAL GOVERNMENT SUPPORT

INTRODUCTION

The investment analysis presented in the Main Report weighs the benefits of college enrollment (measured in terms of CHEs) against the support provided by state and local government. If, without state and local government support a college would have to shut its doors, then it is entirely appropriate to credit all the benefits to that support. This brings up the question: Is it in fact true that the college would have to close its doors absent state and local government support? Increased tuition could almost certainly make up for some of the lost funds, although this would result in reduced enrollment. Still, if the school could remain open and operate at this “zero state and local government support level,” then state and local government support can only be credited with the difference (i.e., the actual enrollment less the enrollment at zero state and local government support). This appendix documents our procedures for making these adjustments, which feed the broad and narrow taxpayer benefit/cost ratios, rates of return, and payback period estimates in the Main Report.

STATE AND LOCAL GOVERNMENT SUPPORT VERSUS TUITION

We start by exploring the issue with the aid of some graphics. **Figure 1** presents a simple model of student demand and state and local government support. The right side of the graph is a standard demand curve (D) showing student enrollment as a function of tuition and other student fees. Enrollment is measured in total CHEs and expressed as a percentage of current CHEs. The current tuition rate is p' , and state and local government support covers $C\%$ of all costs. At this point in the analysis, we assume that the college has only two sources of revenues: student tuition payments and state and local government support.⁵⁰

⁵⁰ Obviously, the college needs at least some measure of support in order to stay open. For smaller schools, the loss of 35% of the student body would be felt far more acutely than if a larger college were to lose the same percentage of its students. For this reason, the analytical model allocates a higher shutdown point, no greater than 50%, for colleges with fewer than 6,000 students, based on an internalized formula.

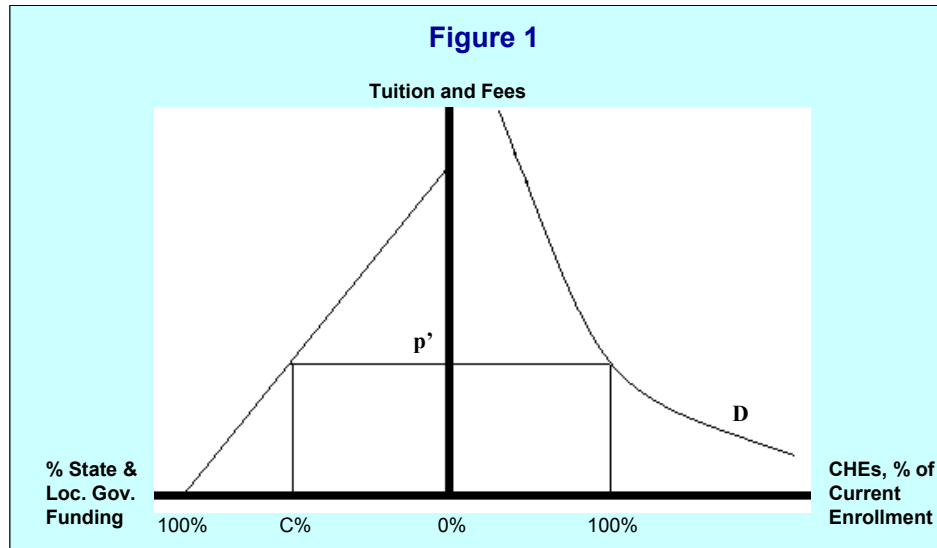
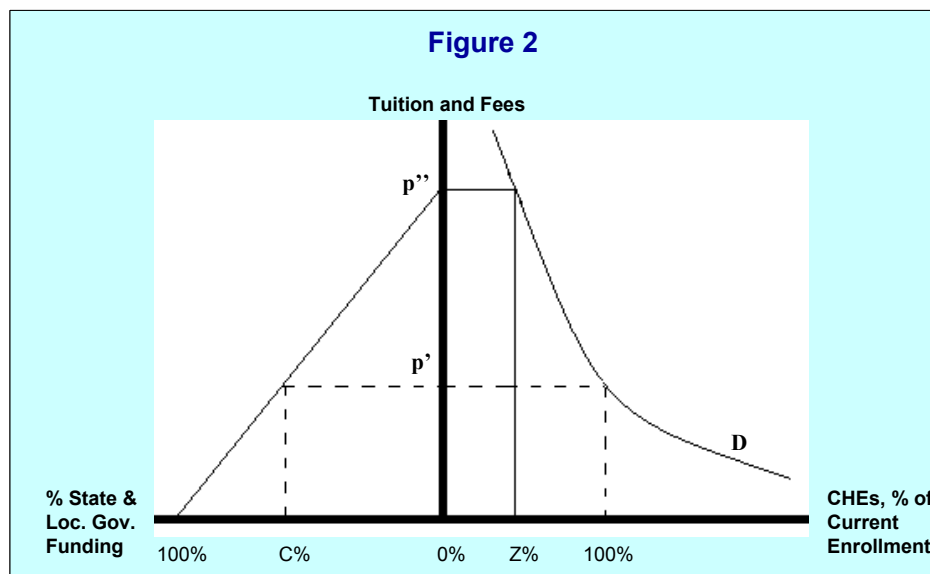


Figure 2 shows another important reference point in the model— where state and local government support is 0%, tuition rates are increased to p'' , and enrollment is $Z\%$ (less than 100%). The reduction in enrollment reflects price elasticity in the students’ school vs. no-school decision. Neglecting for the moment those issues concerning the college’s minimum operating scale (considered below in the section on “The College Shutdown Point”), the implication for our investment analysis is that the benefits of state and local government support for the college must be adjusted to net out the benefits associated with a level of enrollment at $Z\%$ (i.e., the school can provide these benefits absent state and local government support).



FROM ENROLLMENT TO BENEFITS

This appendix is mainly focused on the size of college enrollment (i.e., the production of CHEs) and its relationship to student versus state and local government funding. However, to clarify the argument it is useful to briefly consider the role of enrollment in our larger benefit/cost model.

Let B equal the benefits attributable to state and local government support. B might be understood as applying to either our broad or narrow taxpayer perspectives. The analysis in the Main Report derives all benefits as a function of student enrollments (i.e., CHEs). For consistency with the graphical exposition elsewhere in this appendix, B will be expressed as a function of the percent of current enrollment (i.e., percent of current CHEs). Accordingly, the equation

$$(1) \quad B = B(100\%)$$

reflects the total benefits generated by enrollments at their current levels, measured in our Main Report and shown in **Table 3.6** for the broad and narrow taxpayer perspectives.

Consider benefits now with reference to **Figure 2**. The point where state and local government support is zero nonetheless provides for Z% (less than 100%) of the current enrollment, and benefits are symbolically indicated by:

$$(2) \quad B = B(Z\%)$$

Inasmuch as the benefits in (2) occur with or without state and local government support, the benefits appropriately attributed to state and local government support are given by:

$$(3) \quad B = B(100\%) - B(Z\%)$$

THE COLLEGE SHUTDOWN POINT

College operations will cease when fixed costs can no longer be covered. The shutdown point is introduced graphically in **Figure 3** as S%. The location of point S% indicates that this particular college can operate at an even lower enrollment level than Z% (the

point of zero state and local funding). At point S%, state and local government support is still zero, and the tuition rate has been raised to p''' . At tuition rates still higher than p''' , the college would not be able to attract enough students to keep the doors open, and it would shut down. In **Figure 3**, point S% illustrates the college shutdown point but otherwise plays no role in the estimation of state and local government benefits. These remain as shown in equation (3).

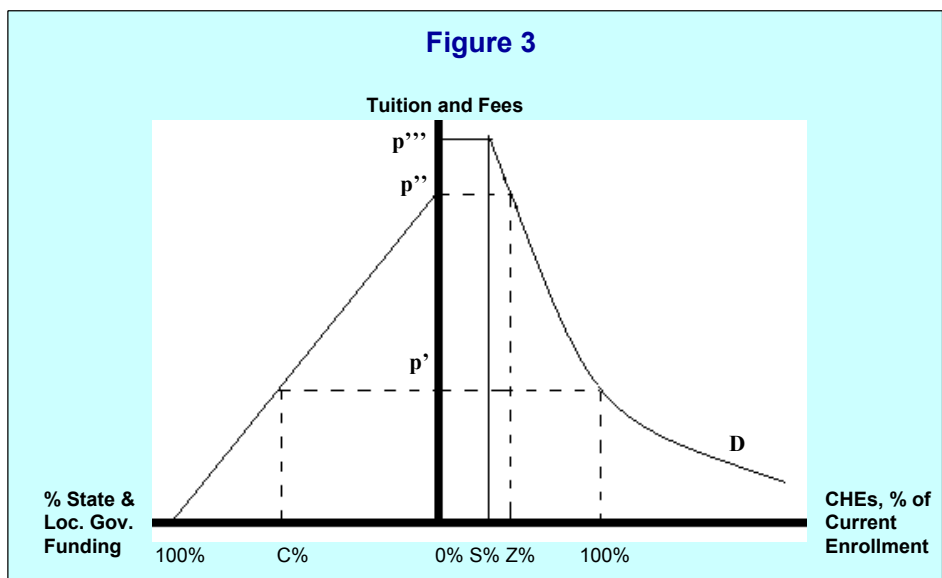
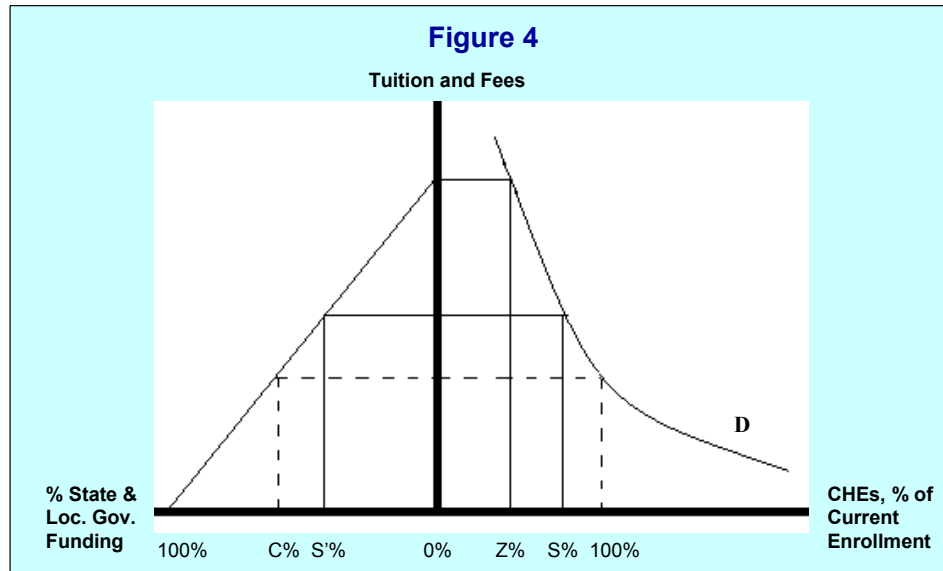


Figure 4 illustrates yet another scenario. Here the college shutdown point occurs at an enrollment level greater than Z% (the level of zero state and local government support), meaning some minimum level of state and local government support is needed for the school to operate at all. This minimum portion of overall funding is indicated by S' % on the left side of the chart, and as before, the shutdown point is indicated by S% on the right side of chart. In this case, state and local government support is appropriately credited all the benefits generated by college enrollment, or $B=B(100\%)$.

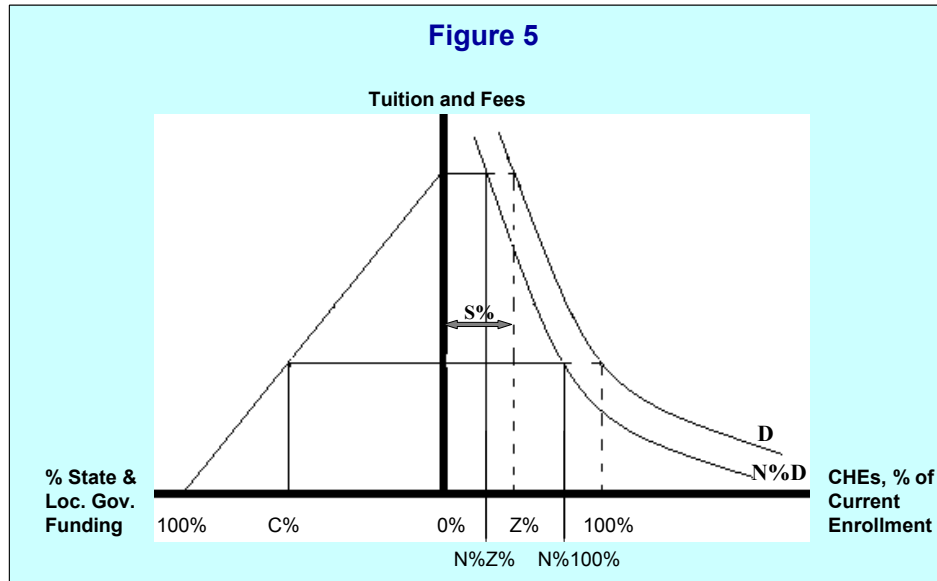


ADJUSTING FOR ALTERNATIVE EDUCATION OPPORTUNITIES

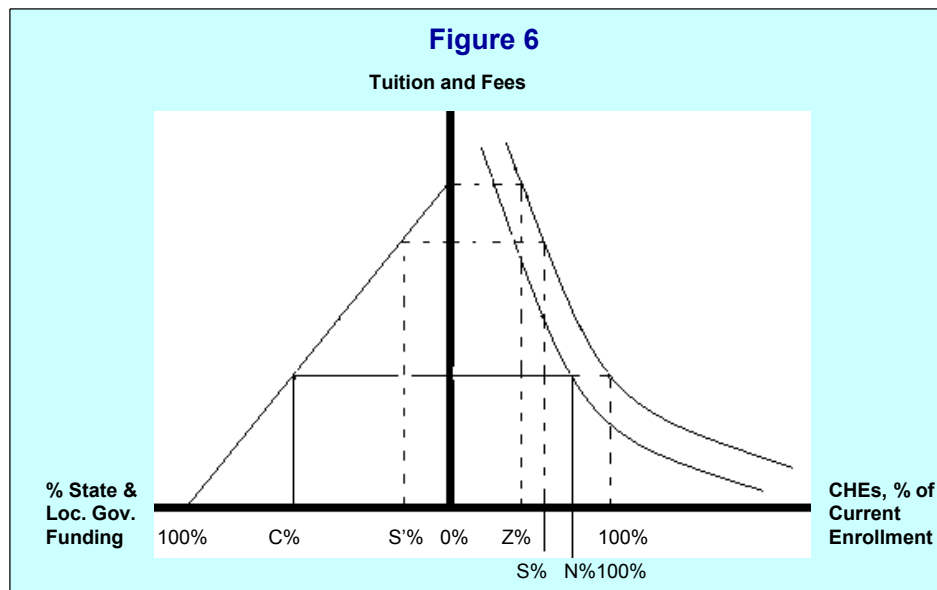
Because there may be education alternatives to the two-year colleges in the state, we must make yet another adjustment. The question asked is: “Absent the publicly funded colleges and universities in the state, what percentage of the students would be able to obtain their education elsewhere?” The benefits associated with the college education of these students are deducted from the overall benefit estimates.

The adjustment for alternative education is easily incorporated into our simple graphic model. For simplicity, let A% equal the percent of students with alternative education opportunities, and N% equal the percent of students without an alternative. Note that: $N\% + A\% = 100\%$. **Figure 5** presents the case where the college could operate absent state and local government support (i.e., Z% occurs at an enrollment level greater than the college shutdown level S%). In this case, the benefits generated by enrollments absent state and local government support must be subtracted from total benefits. This case is parallel to that indicated in equation (3), and the net benefits attributable to state and local government support is given by:

$$(4) \quad B = B(N\%100\%) - B(N\%Z\%)$$



Finally, **Figure 6** presents the case where the college cannot remain open absent some minimum S' % level of state and local government support. In this case the state and local government is credited with all benefits generated by current enrollment, less only the percent of students with alternative education opportunities. These benefits are represented symbolically as $B(N\%100\%)$.



APPENDIX 3: ESTIMATING THE ALTERNATIVE EDUCATION OPPORTUNITY

INTRODUCTION

The alternative education is simply the percent of students who would still be able to avail themselves of alternative education opportunities absent the publicly funded colleges and universities in the state.⁵¹ In the earlier versions of the economic impact model we asked the researchers at the individual colleges to provide an estimate of this variable, but not without considerable effort on their part to, first, fully understand why we were asking for this information and, second, determine what the numerical estimate should be. Because this process proved to be very cumbersome, we decided to internalize it in the model through the application of a regression analysis based on estimates already received from 117 colleges previously analyzed. The purpose of this appendix is to lay out the theoretical framework for determining the alternative education opportunity variable and the data used to make this determination.

ALTERNATIVE EDUCATION VARIABLE IN FUNCTIONAL FORM

The alternative education variable is the dependent variable, expressed in functional form as:

$$(1) \quad Y = b_1X_1 + b_2X_2 + b_3X_3 + e$$

Where:

Y = Dependent variable, alternative education opportunity expressed as percentage of students who would be able to avail themselves of alternative education elsewhere from private institutions

b_i = partial regression coefficients

e = standard error

⁵¹ The question we ask in determining the alternative education variable is as follows: What percentage of students would still be able to receive higher education if all publicly funded institutions in the state (community colleges, technical colleges, state universities, etc.) were shut down? If state and local taxpayers decided to stop their financial support of colleges and universities, students would no longer be able to avail themselves of such funds to pursue their education. They still have the option, however, of attending a private institution.

INDEPENDENT VARIABLES

The three independent variables reflect the explanatory parameters explained to institutional researchers and fiscal officers when asked to derive their own estimates. These parameters now form the theoretical backdrop to the internal estimation of the dependent variable based on 117 observations. The three independent variables include the following:

X₁: Population per square mile in the college service region

This variable defines the population density of the college service area. A positive coefficient (b) is expected; i.e., the more densely populated the area, the more numerous will be the alternative education opportunities.⁵²

X₂: Number of private school employees per 1,000 population per square mile in the college service region

This variable is a proxy for the availability of private educational institutions providing alternative education opportunities in the college service area. A positive coefficient (b) is expected; i.e., the more private school employees, the more alternative education opportunities there are in the area.⁵³

X₃: Personal income

The average personal income of the residents in the service area serves as a measure of the relative economic well-being of the area. A positive coefficient (b) is expected; i.e., the higher the average earnings in the area, the more the students will be able to avail themselves of the alternative education opportunities. This number is expressed in thousands.⁵⁴

EXAMPLE OF ANALYSIS AND RESULTS

Ordinary least squares (OLS) was the procedure used to estimate the parameters. Fitting the equation by OLS yielded the following results:

⁵² This information may be found at the U.S. Census Bureau, 2002 Population Estimates [database on-line], available from http://eire.census.gov/popest/data/counties/files/county_dataset.csv.

⁵³ Available from the U.S. Department of Commerce, 2001 County Business Patterns.

⁵⁴ Available from the U.S. Department of Commerce, Bureau of Economic Analysis, 2001 REIS Employment and Earnings Reports.

APPENDIX 3: ESTIMATING THE ALTERNATIVE EDUCATION OPPORTUNITY

$$(2) \quad Y = 3.43E-05X_1 + 0.023565X_2 + 0.005748X_3 + 0.064722$$

(2.723) (1.4765) (3.1326)

$$R^2 = .458 \text{ (coefficient of determination)}$$

$$F = 31.84 \text{ (Fischer test statistic)}$$

The numbers in parentheses below the coefficients are the “t” values (all statistically significant). The R^2 measures the degree to which the independent variables explain the variation in the dependent variable. The maximum R^2 attainable (1.00) is the case in which all observations fall on the regression line and all variability is explained. The .458 R^2 obtained in equation (2) indicates that nearly 46% of the variation in the alternative education opportunity is explained by the variables. The F-ratio indicates that the equation can be considered a good predictor of the alternative education opportunity.

The positive signs of the regression coefficients agree with expected relationships. As population density, the number of private school employees, and personal income increase, so does the provision of alternative education opportunities.

For example, suppose a community or technical college has a service region of five counties. The total population of the five counties is 188,341, while the size of the region is 3754 square miles; the average population per square mile is therefore a little over 50. Within this region, there is about 1 higher education private school employee for every 3,000 residents. Finally, the average income per person within the region is \$21,869 per year. Using this data, we produce the following results:

$$(3) \quad Y = (3.43E-05 * 50.2) + (0.023565 * .3318) + (0.005748 * 21.869)$$

$$(4) \quad Y = 13.5\%$$

APPENDIX 4: EXPLAINING THE RESULTS – A PRIMER

The purpose of this appendix is to provide some context and meaning to investment analysis results in general, using the simple hypothetical example summarized in **Table 1** below. The table shows the projected (assumed) benefits and costs over time for one student and the associated investment analysis results.⁵⁵

Table 1. Costs and Benefits

Year	Tuition	Opportunity Cost	Total Cost	Higher Earnings	Net Cash Flow
1	2	3	4	5	6
1	\$1,500	\$20,000	\$21,500	\$0	(\$21,500)
2	\$0	\$0	\$0	\$5,000	\$5,000
3	\$0	\$0	\$0	\$5,000	\$5,000
4	\$0	\$0	\$0	\$5,000	\$5,000
5	\$0	\$0	\$0	\$5,000	\$5,000
6	\$0	\$0	\$0	\$5,000	\$5,000
7	\$0	\$0	\$0	\$5,000	\$5,000
8	\$0	\$0	\$0	\$5,000	\$5,000
9	\$0	\$0	\$0	\$5,000	\$5,000
10	\$0	\$0	\$0	\$5,000	\$5,000
NPV			\$21,500	\$35,747	\$14,247
IRR					18%
B/C Ratio					1.7
Payback Period					4.2 years

The assumptions are as follows:

- 1) The time horizon is 10 years—i.e., we project the benefits and costs out 10 years into the future (Column 1). Once the higher education has been earned, the benefits of higher earnings remain with the student into the future. Our objective is to measure these future benefits and compare them to the costs of the education.
- 2) The student attends the community or technical college for one year for which he or she pays a tuition of \$1,500 (Column 2).

⁵⁵ Note that this is a hypothetical example. The numbers used are not based on data collected from any community or technical college.

- 3) The opportunity cost of time (the earnings foregone while attending the community or technical college for one year) for this student is estimated at \$20,000 (Column 3).
- 4) Together, these two cost elements (\$21,500 total) represent the out-of-pocket investment made by the student (Column 4).
- 5) In return, we assume that the student, having completed the one year of study, will earn \$5,000 more per year than he would have without the education (Column 5).
- 6) Finally, the net cash flow column (NCF) in Column 6 shows higher earnings (Column 5) less the total cost (Column 4).
- 7) We assume a “going rate” of interest of 4%, the rate of return from alternative investment schemes, for the use of the \$21,500.

Now the “mechanics” – we express the results in standard investment analysis terms: the net present value (NPV), the internal rate of return (IRR – or, as referred to in the Main Report, simply the rate of return – RR), the benefit/cost ratio (B/C), and the payback period. Each of these is briefly explained below in the context of the cash flow numbers in **Table 1**.

THE NET PRESENT VALUE (NPV)

“A bird in hand is worth two in the bush.” This simple folk wisdom lies at the heart of any economic analysis of investments lasting more than one year. The student we are tracking in **Table 1** has choices: 1) attend a community or technical college, or 2) forget about higher education and hold on to the present employment. If he or she decides to enroll, certain economic implications unfold: the tuition must be paid and earnings will cease for one year. In exchange, the student calculates that, with the higher education, his or her income will increase by at least the \$5,000 per year as indicated in the table.

The question is simple: will the prospective student be economically better off by choosing to enroll? If we add up the higher earnings of \$5,000 per year for the remaining nine years in **Table 1**, the total will be \$45,000. Compared to a total investment of \$21,500, this appears to be a very solid investment. The reality, however, is different – the benefits are far lower than \$45,000 because future money is worth less than present money. The costs (tuition plus foregone earnings) are felt immediately because they are

incurred today – in the present. The benefits (higher earnings), on the other hand, occur in the future. They are not yet available. We must discount all future benefits by the going rate of interest (referred to as the discount rate) to be able to express them in present value terms.⁵⁶ A brief example: at 4%, the present value of \$5,000 to be received one year from today is \$4,807. If the \$5,000 were to be received in year ten, the present value would reduce to \$3,377. Or put another way, \$4,807 deposited in the bank today earning 4% interest will grow to \$5,000 in one year; and \$3,377 deposited today would grow to \$5,000 in ten years. An “economically rational” person would, therefore, be equally satisfied receiving \$3,377 today or \$5,000 ten years from today given the going rate of interest of 4%. The process of discounting – finding the present value of future higher earnings – allows us to express values on an equal basis in future or present value terms.

Our goal is to express all future higher earnings in present value terms so that we can compare them to the investments incurred today – the tuition and foregone earnings. As indicated in **Table 1**, the cumulative present value of the flow of \$5,000 worth of higher earnings between years 2 and 10 is \$35,747 given the 4% interest rate, far lower than the undiscounted \$45,000 discussed above.

The measure we are looking for is the net present value of \$14,247. It is simply the present value of the benefits less the present value of the costs, or $\$35,747 - \$21,500 = \$14,247$. In other words, the present value of benefits exceeds the present value of costs by as much as \$14,247. The criterion for an economically worthwhile investment is that the net present value is equal to or greater than zero. Given this result, it can be concluded that, *in this case*, and given these assumptions, this particular investment in college education is very strong.

THE INTERNAL RATE OF RETURN (IRR)

The internal rate of return is another way of measuring the worth of the investment in education using the same cash flows shown in **Table 1**. In technical terms – the internal rate of return is a measure of the average earning power of the money used over the life of the investment. It is simply the interest rate that makes the net present value equal to zero. In the NPV example above we applied the “going rate” of interest of 4% and

⁵⁶ Technically, the interest rate is applied to compounding – the process of looking at deposits today and determining how much they will be worth in the future. The same interest rate is called a discount rate when we reverse the process – determining the present value of future earnings.

computed a positive net present value of \$14,247. The question now is: what would the interest rate have to be in order to reduce the net present value to zero? Obviously it would have to be higher – 18% in fact, as indicated in **Table 1**. Or, if we applied 18% to the NPV calculations instead of the 4%, then the net present value would reduce to zero.

What does this mean? The internal rate of return of 18% defines a breakeven solution – the point where the present value of benefits just equals the present value of costs, or where the net present value equals zero. Or, at 18%, the higher incomes of \$5,000 per year for the next nine years will earn back all the investments of \$21,500 made plus pay 18% for the use of that money (the \$21,500) in the meantime. Is this a good return? Indeed it is. If we compare it to the 4% “going rate” of interest we applied to the net present value calculations, 18% is far higher than 4%. We can conclude, therefore, that the investment in this case is solid. Alternatively, we can compare the rate to the long-term 7% rate or so obtained from investments in stocks and bonds. Again, the 18% is far higher, indicating that the investment in community or technical education is strong relative to the stock market returns (on average).

A word of caution – the IRR approach can sometimes generate “wild” or “unbelievable” results – percentages that defy the imagination. Technically, the approach requires at least one negative cash flow (tuition plus opportunity cost of time) to offset all subsequent positive flows. For example, if the student works full-time while attending college, the opportunity cost of time would be much lower – the only out-of-pocket cost would be the \$1,500 paid for tuition. In this case, it is still possible to compute the internal rate of return, but it would be a staggering 333% because only a negative \$1,500 cash flow will be offsetting nine subsequent years of \$5,000 worth of higher earnings. The 333% return is technically correct, but not consistent with conventional understanding of returns expressed as percentages. For purposes of this report, therefore, we express all results in the Main Report exceeding 100% simply as: “NA” or “> 100%.”

THE BENEFIT/COST RATIO (B/C)

The benefit/cost ratio is simply the present value of benefits divided by present value of costs, or $\$35,747 / \$21,500 = 1.7$ (based on the 4% discount rate). Of course, any change in the discount rate will also change the benefit/cost ratio. If we applied the 18% internal rate of return discussed above, the benefit/cost ratio would reduce to 1.0 – or the breakeven solution where benefits just equal the costs. Applying a discount rate higher

than the 18% would reduce the ratio to less than one and the investment would not be feasible. The 1.7 ratio means that a dollar invested today will return a cumulative \$1.70 over the ten year time period.

THE PAYBACK PERIOD

This is the length of time from the beginning of the investment (consisting of the tuition plus the earnings foregone) until the higher future earnings return the investments made. In **Table 1**, it will take roughly 4.2 years of \$5,000 worth of higher earnings to recapture the student's investment of \$1,500 in tuition and the \$20,000 earnings he or she foregoes while attending the community or technical college. The higher earnings occurring *beyond* the 4.2 years are the returns (the "gravy") that make the investment in education *in this example* economically worthwhile. The payback period is a fairly rough, albeit common, means of choosing between investments. The shorter the payback period is, the stronger the investment will be.

APPENDIX 5: OVERVIEW OF THE INPUT/OUTPUT MODEL

OVERVIEW

Input-output (IO) models are based on a double entry accounting system that shows the interconnection of industries, government and households. IO theory has been around since the 1930s and has won the Nobel Prize in economics for its inventor, Wassily Leontief. Textbooks on IO theory and practice are numerous, although we recommend Miller and Blair (1985).

The model employed in the present study is obtained from the U.S. Department of Commerce (the regional IO model), and managed by software developed by Economic Modeling Specialists, Inc. (EMSI) of Moscow, Idaho. EMSI regional IO multipliers are produced using common “data-reduction” techniques, and produce multipliers of similar magnitude as those generated by other popular regional IO modeling products, such as the IMPLAN model (Minnesota IMPLAN Group, Stillwater, MN) and RIO Model (Rutgers University, Center for Urban Policy Research, New Brunswick, NJ).

EMSI regional IO modeling software was used to develop the Utah Multiregional IO (UMRIO) model (Governor’s Office of Planning and Budget, et al. [Salt Lake City, UT: Demographic and Economic Analysis, 1994]), the Idaho Economic Modeling Project (IDAEMP) (M. H. Robison, R. Coupal, N. Meyer, and eds [Moscow, ID: University of Idaho, College of Agriculture, 1991]), and the Oregon Economic Modeling System (OREMS) (M. H. Robison, Proceeding at the 29th Annual Pacific Northwest Economic Conference [Missoula, MT: 1995]).⁵⁷

REDUCING MULTIPLIER IMPACTS

IO models track the so-called “ripple” or “multiplier” effects of a given direct economic event. In the case of the analyses reported in our main report, the ripple effects stem from the increased incomes of Southwestern students. With added incomes, students have more money to spend which subsequently affects earnings in other industries

⁵⁷ The approach is also chronicled in M.H. Robison, “Community Input-Output Models for Rural Area Analysis: With an Example from Central Idaho,” *Annals of Regional Science* 31 no. 3 (1997): 325-331.

through multiplier effects. Similarly, the businesses that hire these workers are more productive, purchasing additional inputs and rewarding business owners with greater incomes. This generates further multiplier effects.⁵⁸ An important function of models is the estimation of multiplier effects.

It has been argued that overall multiplier effects like the ones just described overstate net effects by as much as 80%.⁵⁹ The reason is that while the economy is stimulated and incomes increase, the factors of production (land, labor and capital) receiving these increased incomes abandon lower paying next-best opportunities. At some level the jobs and uses of capital that are left behind are simply left undone, or perhaps outsourced overseas. The result is that gross multiplier effects need to be reduced to reflect this opportunity cost of taking a newly created job.

Few IO analysts bother to make the correction just described. In contrast, and to provide impact results that might be described as “conservative,” we apply the maximum downward adjustment suggested by the literature. Thus, in the main report we estimate gross multiplier effects using an EMSI IO model, then discard all but 20% of the indicated indirect impact.

⁵⁸ Multipliers are generally defined as the total effect divided by the direct effect – or the direct and indirect effects divided by the direct effect. An impact effect described as 150% of the direct effect would be associated with a multiplier of 2.5 (direct effect = 1.0; indirect effect = 1.5).

⁵⁹ See J.R. Hamilton, N.K. Whittlesey, M.H. Robison and J. Ellis, "Economic Impacts, Value Added and Benefits in Regional Project Analysis," *American Journal of Agricultural Economics* 31 no. 2 (1991): 334-344.

APPENDIX 6: EXPLANATION OF VARIANCES IN RESULTS

INTRODUCTION

CCbenefits, Inc. completed a Socioeconomic Impact (SEIM) study for Southwestern Oregon Community College in 2002. The present report is an updated study applying data from both the 2002 Starter Kit and the Refresher Starter Kit from 2006. Ratios derived from the 2006 Refresher Kit were applied to the 2002 Starter Kit to update the data for the present study.⁶⁰

The purpose of this appendix is to outline the changes and/or updates that were made to the data provided by Southwestern and to the CCbenefits, Inc. Socioeconomic Impact Model between the time that the first study was conducted and the present study. Each revision is linked to specific tables in the present report, with references made to the original 2002 study. For more information, the reader is encouraged to review the original set of reports produced for Southwestern in 2002.

Changes are broken down into three basic categories:

1. Data Updates in the CCbenefits, Inc. Socioeconomic Impact Model
2. Improved Methodology and Application of New Theory
3. Revised Data from Southwestern

DATA UPDATES IN THE CCBENEFITS, INC. SOCIOECONOMIC IMPACT MODEL

Income and Earnings Data

Average earnings by education level reported in **Table 2.5** are calculated using national averages from the U.S. Census Bureau, which are regionalized by applying a ratio of regional earnings to national earnings. These data were updated in March 2006 in the

⁶⁰The Starter Kit is an Excel spreadsheet which compiles together all of the necessary variables for the study. The Refresher Kit is a condensed version of the Starter Kit employed only by those colleges that request an updated set of reports. Only the most crucial variables (i.e., student headcount, college revenue, faculty and staff wages and salaries, etc.) are requested in the Refresher Kit.

CCbenefits SEIM model. Regional income data reported in **Table 4.1** of the present report were also updated.

State and Local Tax Data

State and local tax data from the U.S. Census Bureau were updated in the SEIM model in March 2006, thereby adjusting the estimated amount of added taxes in the state as a result of higher student earnings and added income. Added taxes plus the avoided social costs figure directly into the calculation of the return on investment from the narrow taxpayer perspective.

Social Variables

Data on the statistical correlation between improved lifestyles and higher education were updated in June of 2005. In most cases the updated data generated results that were slightly more conservative than previously reported, particularly for reduced absenteeism, reduced welfare and unemployment, and reduced incarceration costs.

IMPROVED METHODOLOGY AND APPLICATION OF NEW THEORY

CHE Engine

The methodology used to move students through their education between the time they entered the college and the beginning of the analysis year was refined and updated in the CCbenefits SEIM model in March 2006 (see **Table 2.3**). These changes allowed for a more accurate representation of the typical student's college career as he or she works to complete his/her education.

Alternative Education Opportunity

In the 2002 study, Southwestern staff members were requested to provide CCbenefits with an estimate of the percent of students who would be able to obtain education elsewhere absent the publicly funded colleges and universities in the state. This variable – the alternative education variable – was later internalized in the CCbenefits SEIM model. For more information regarding the reasons and methodology behind the calculation of the Alternative Education Variable for Southwestern, please refer to **Appendix 3**.

Labor Versus Non-Labor Income

The present analysis includes an analysis of Southwestern's impact on both labor and non-labor income in the Southwestern Service Area (see **Table 4.1** in the present report). Impacts were expressed only in terms of labor income in the 2002 study. The primary reason for including the impact of Southwestern on non-labor income is in recognition of the fact that past student productivity affects *all* factors of production, i.e., labor, land and capital. These include wages, salaries, proprietors' incomes, profits, rents and other. The direct and indirect effect of Southwestern on non-labor income is derived using value-added ratios estimated by the EMSI regional IO model.

Hamilton Reduction Factor

The indirect effects generated by past students and by Southwestern operations in the Southwestern Service Area are discounted by all but 20% in accordance with recent theory arguing that overall multiplier effects overstate net effects by as much as 80%.⁶¹ See **Appendix 5** for more details.

REVISED DATA FROM SOUTHWESTERN

College Revenues

Southwestern provided data on the aggregate revenues received by the college for both the 2002 and 2006 studies. In 2006, a smaller percentage of the total college budget was covered by state and local grants and appropriations (44% in 2006 as opposed to 65% in 2002). The portion of college revenue provided by state and local taxpayers is directly used to calculate the taxpayer return on investment and benefit/cost ratios.

College Expenditures

College operation spending generates additional earnings in the Southwestern Service Area, due to the well-known multiplier (i.e., ripple) effects. A comparison of **Table 2.10** from the 2002 study and **Table 2.11** in the present report shows that Southwestern's spending increased by roughly \$1.6 million between 2002 and 2006 (\$24.9 million in 2006

⁶¹ See J.R. Hamilton, N.K. Whittlesey, M.H. Robison and J. Ellis, "Economic Impacts, Value Added and Benefits in Regional Project Analysis," *American Journal of Agricultural Economics* 31 no. 2 (1991): 334-344.

minus \$23.3 million in 2002). These figures are used to calculate both the direct and indirect earnings effect of Southwestern operations in the local region.

Student Achievements

The estimated number of Southwestern CHEs embodied in the local workforce was higher in 2006 than in 2002 (see **Table 2.12** in the 2002 study, which reports 2.0 million embodied CHEs, as opposed to the **Table 2.12** in the present report, which reports a total of 2.4 million embodied CHEs). The number of CHEs embodied in the workforce is used to calculate the increased skills and added income in the Southwestern Service Area due to the productivity effects of past students. See also **Table 4.2** in the present report.