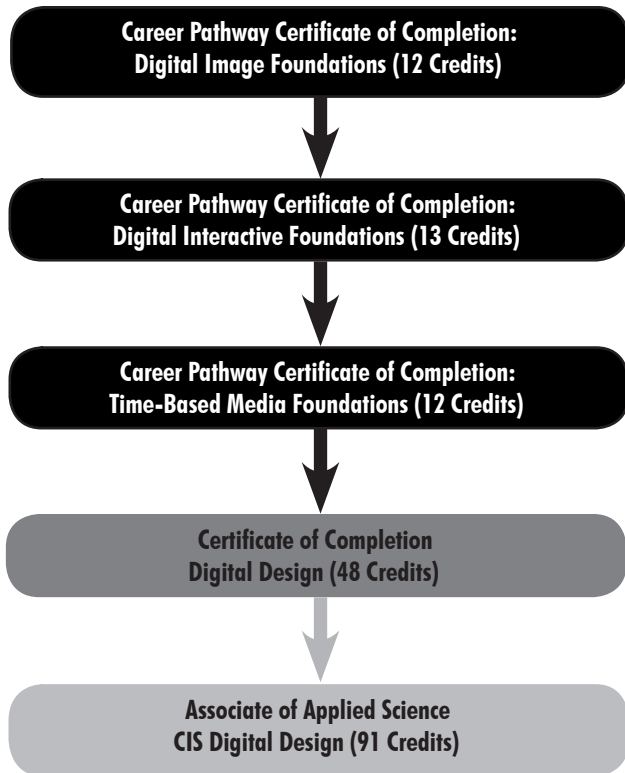


## ASSOCIATE OF APPLIED SCIENCE CIS DIGITAL DESIGN



The Associate of Applied Science CIS Digital Design degree is designed to successfully prepare students for careers in the expanding fields of digital design and media productions through an integrated curriculum exposing students to design principles and technical strategies. Upon successful completion of the AAS CIS Digital Design degree, students are prepared for a variety of entry-level positions in numerous digital design fields. Students attain knowledge and learn skills to seek careers in creative and support professions within such media industries as film and video, graphic design, production, game development, animation, and web design. Some of the careers available in media include: production designer, camera operator, visual effects production, multimedia producer, duplication, production assistant, graphic artist, art assistant, web designer, and other emerging opportunities.

### PROGRAM STUDENT LEARNING OUTCOMES

Upon successful completion of this program the student will be able to:

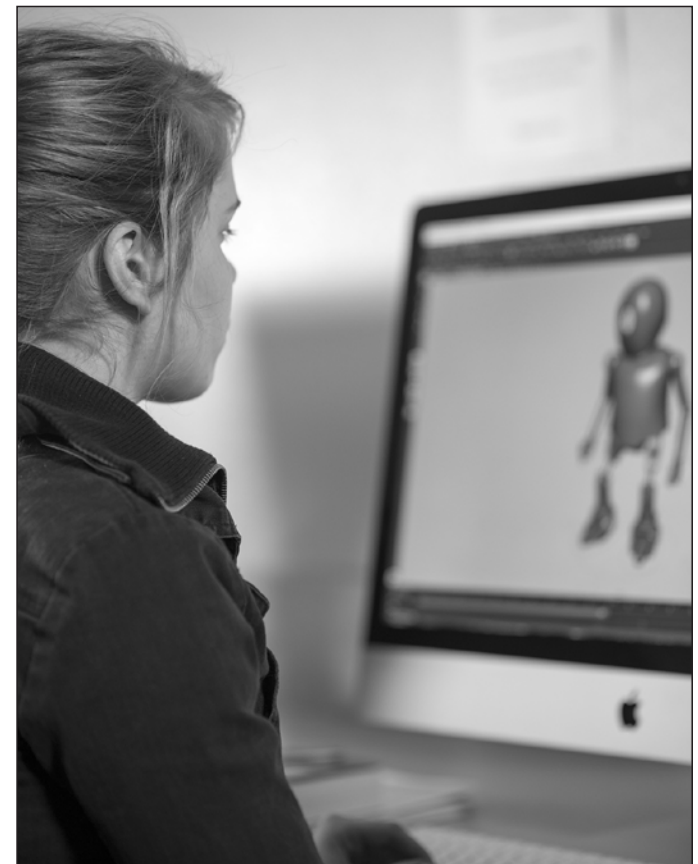
- Demonstrate professional design principles and practices.
- Plan, design, develop, and edit digital images and graphics.
- Plan, design, develop, and edit digital time-based media
- Plan, design, develop, and edit interactive web pages.
- Work effectively as part of a design team.

### GRADUATION REQUIREMENTS

Students must complete a minimum of 91 credit hours with a minimum Grade Point Average (GPA) of 2.0 or better. All courses must be passed with a grade of 'C' or better. Twenty-four (24) credits must be completed at Southwestern before the AAS CIS Software Development degree is awarded.

Complete the graduation application process one term prior to the term of completion (e.g., spring term graduates must apply during winter term).

PROGRAM  
REQUIREMENTS



## ASSOCIATE OF APPLIED SCIENCE CIS DIGITAL DESIGN

<b>PREREQUISITES</b>	<b>WR90 (3)</b> Paragraph Fundamentals (or placement test score)	<b>MTH60 (4)</b> Algebra I (or placement test score)	Reading Score of ASSET42 COMPASS81	<b>CIS90 (2)</b> Computer Basics (or demonstrate proficiency)
----------------------	--	--	---------------------------------------	---

PROGRAM REQUIREMENTS

<b>FALL = 15 CREDITS</b>	<b>ART 115 (3)</b> Basic Design I	<b>CIS125PH (3)</b> Computer Applications: Photoshop	<b>WR115 (3)</b> Introduction to Expository Writing (or higher)	<b>ART131 (3)</b> Introduction to Drawing I	<b>DD160 (3)</b> Digital Design Orientation
<b>WINTER = 16 CREDITS</b>	<b>ART116 (3)</b> Basic Design II, Color Theory	<b>CIS120 (4)</b> Computing Concepts <sup>1</sup>	<b>CS195 (3)</b> Web Development I	<b>DD235PH (3)</b> Digital Design Applications: Photoshop	<b>ART110 (3)</b> Digital Photography I
<b>SPRING = 16 CREDITS</b>	<b>ART117 (3)</b> Basic Design III, Introduction to 3D Design	<b>CIS125MA (3)</b> Computer Applications: Maya <sup>2</sup>	<b>CS133WS (4)</b> Computer Language I Web Scripting	<b>BA285 (3)</b> Human Relations in Organizations <sup>3</sup>	<b>CIS125IL (3)</b> Computer Applications: Illustrator

### 47 CREDITS = FIRST YEAR TOTAL REQUIREMENT

<b>FALL = 16 CREDITS</b>	<b>DD235MA (3)</b> Digital Design Applications: Maya <sup>4</sup>	<b>CIS125DW (3)</b> Computer Applications: Dreamweaver	<b>MTH86 (4)</b> Computer Technology Mathematics	<b>BA150 (3)</b> Introduction to Entrepreneurship <sup>5</sup>	<b>ART210 (3)</b> Digital Photography II
<b>WINTER = 16 CREDITS</b>	<b>DD250 (3)</b> Projects in Digital Design	<b>SP100 (3)</b> Basic Speech Communi- cation (or higher)	<b>DD280 (4)</b> CWE: Digital Design	<b>BA223 (3)</b> Principles of Marketing	<b>(3)</b> Specific Elective <sup>6</sup>
<b>SPRING = 12 CREDITS</b>	<b>PE231 (3)</b> Wellness for Life <sup>7</sup>	<b>DD297 (3)</b> Digital Design Capstone	<b>(3)</b> Specific Elective <sup>6</sup>	<b>(3)</b> Specific Elective <sup>6</sup>	

### 44 CREDITS = SECOND YEAR TOTAL REQUIREMENT

### 91 CREDITS = TOTAL PROGRAM REQUIREMENT

#### PROGRAM NOTES

<sup>1</sup>CIS120X may be substituted for CIS120.

<sup>2</sup>CIS125TD may be substituted for CIS125MA.

<sup>3</sup>BA110, 120; HS150; PSY100, 201, 203 may be substituted for BA285.

<sup>4</sup>DD235ID may be substituted for DD235MA.

<sup>5</sup>CIS250 may be substituted for BA150.

<sup>6</sup>Specific Electives: Any CS/CIS, BA, ART, or DD course not otherwise required within the degree; MTH course higher than MTH86.

<sup>7</sup>HE250 or three (3) credits of PE185 may be substituted for PE231.