



**SOUTHWESTERN**  
AN OREGON COMMUNITY COLLEGE

1/29

**Let's  
Setup  
Your  
Multi-Factor!**





**SOUTHWESTERN**  
AN OREGON COMMUNITY COLLEGE

2/29

-> Start by going to

**<https://www.microsoft365.com/>**





**SOUTHWESTERN**  
AN OREGON COMMUNITY COLLEGE

3/29

-> Click Sign in

## Office is now Microsoft 365

The all-new Microsoft 365 lets you  
create, share and collaborate all in one  
place with your favorite apps

[Sign in](#)

[Get Microsoft 365](#)





**SOUTHWESTERN**  
AN OREGON COMMUNITY COLLEGE

4/29


- > Enter your SOCC email address
- > Click Next



**Sign in**

8675432@email.socc.edu

[Can't access your account?](#)

Next 





**SOUTHWESTERN**  
AN OREGON COMMUNITY COLLEGE

- > Enter your Password
- > Click Sign in



**SOUTHWESTERN**  
AN OREGON COMMUNITY COLLEGE

← 8675432@email.socc.edu

**Enter password**

.....|

[Forgot my password](#)

Sign in 





**SOUTHWESTERN**  
AN OREGON COMMUNITY COLLEGE

-> Click Next



**SOUTHWESTERN**  
AN OREGON COMMUNITY COLLEGE

8675432@email.socc.edu

## More information required

Your organization needs more information to keep your account secure. Before making changes to your security info you must complete multifactor authentication.

[Use a different account](#)

[Learn more](#)

[Next](#)



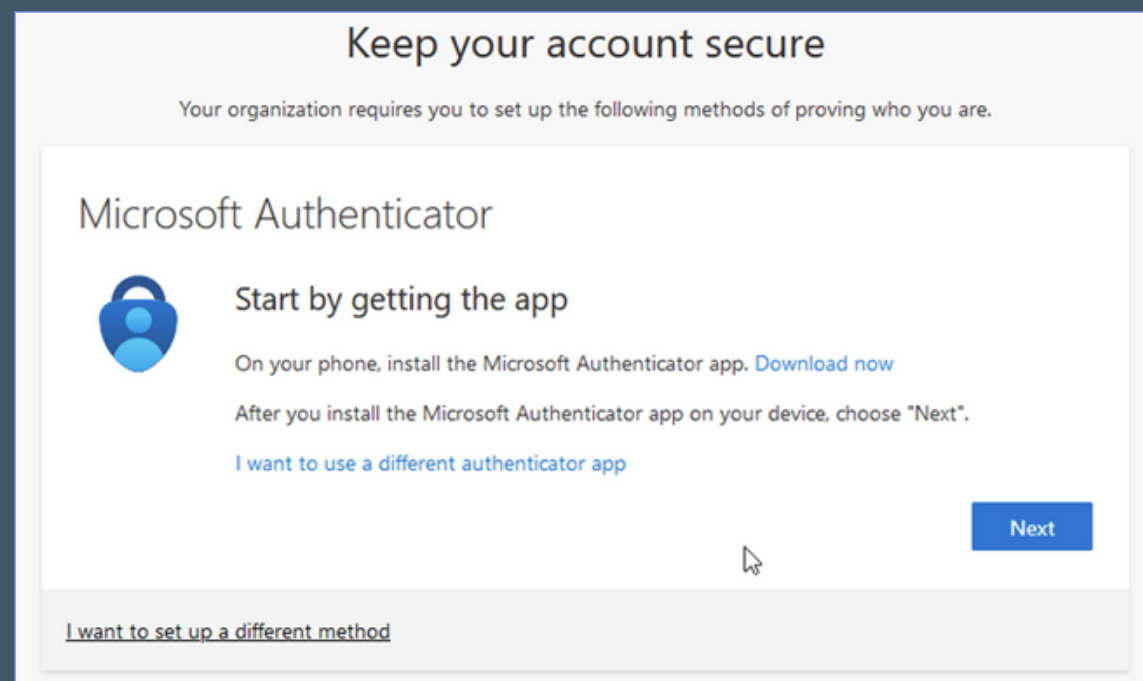


**SOUTHWESTERN**  
AN OREGON COMMUNITY COLLEGE

7/29

From this "Keep your account secure" screen, you have several options for choosing a MFA device/method...

- Microsoft Authenticator App (steps linked [\*\*here\*\*](#))
- Other Authenticator App (steps linked [\*\*here\*\*](#))
- Text message (steps linked [\*\*here\*\*](#))
- Phone call (steps linked [\*\*here\*\*](#))





**SOUTHWESTERN**  
AN OREGON COMMUNITY COLLEGE


## (Microsoft Authenticator Steps)

-> Click Next

**Keep your account secure**

Your organization requires you to set up the following methods of proving who you are.

### Microsoft Authenticator




**Start by getting the app**

On your phone, install the Microsoft Authenticator app. [Download now](#)

After you install the Microsoft Authenticator app on your device, choose "Next".

[I want to use a different authenticator app](#)

[Next](#) 

[I want to set up a different method](#)



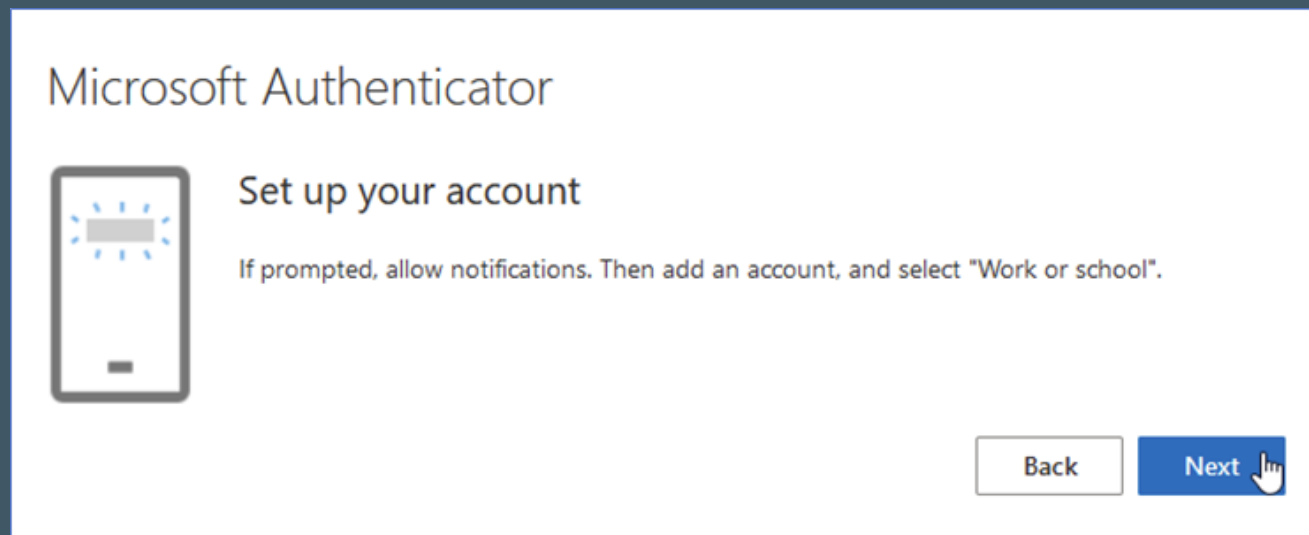




**SOUTHWESTERN**  
AN OREGON COMMUNITY COLLEGE

## (Microsoft Authenticator Steps)

-> Click Next





**SOUTHWESTERN**  
AN OREGON COMMUNITY COLLEGE

## (Microsoft Authenticator Steps)

- > With the Authenticator app open on your phone, have it scan the QR code
- > Click Next

### Microsoft Authenticator

#### Scan the QR code

Use the Microsoft Authenticator app to scan the QR code. This will connect the Microsoft Authenticator app with your account.

After you scan the QR code, choose "Next".



Can't scan image?

Enter the following into your app:

**Code:** 794



**URL:** <https://mobileappcommunicator.auth.microsoft.com/activate/>



Back

Next





**SOUTHWESTERN**  
AN OREGON COMMUNITY COLLEGE

## (Microsoft Authenticator Steps)

-> You are provided a number on the screen that needs to be entered into the Authenticator app to continue



**SOUTHWESTERN**  
AN OREGON COMMUNITY COLLEGE

8675432@email.socc.edu

### **Approve sign in request**



Open your Authenticator app, and enter the number shown to sign in.



No numbers in your app? Make sure to upgrade to the latest version.

[I can't use my Microsoft Authenticator app right now](#)

[More information](#)

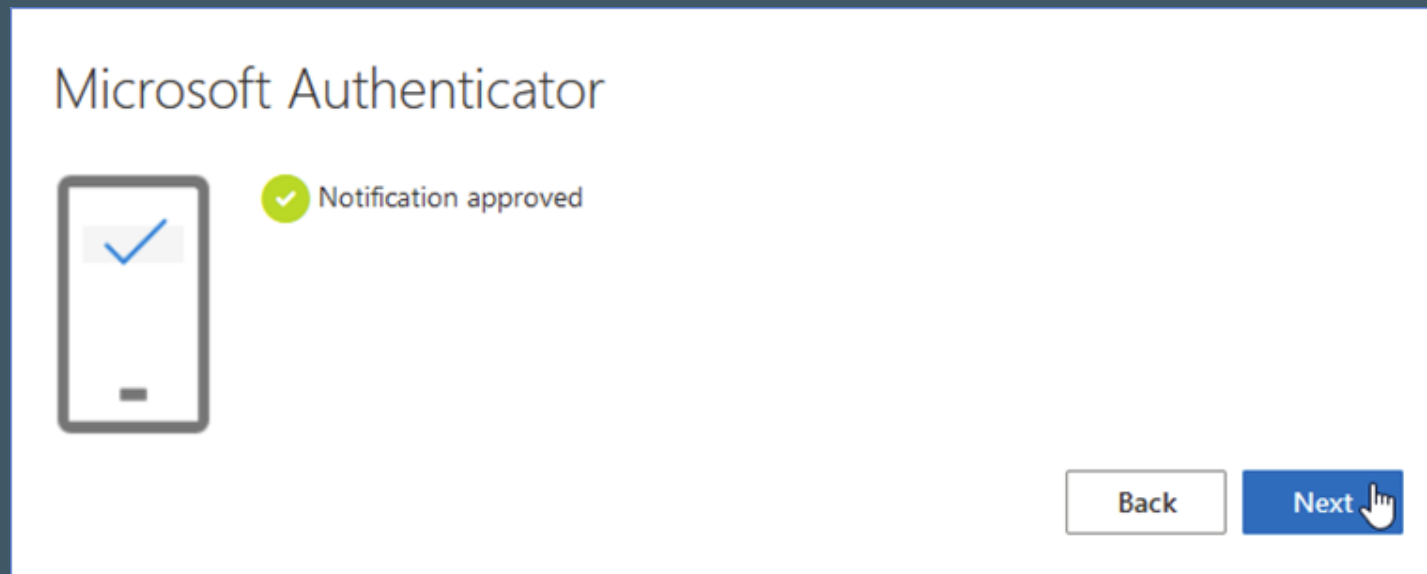




**SOUTHWESTERN**  
AN OREGON COMMUNITY COLLEGE

(Microsoft Authenticator Steps)

-> Click Next



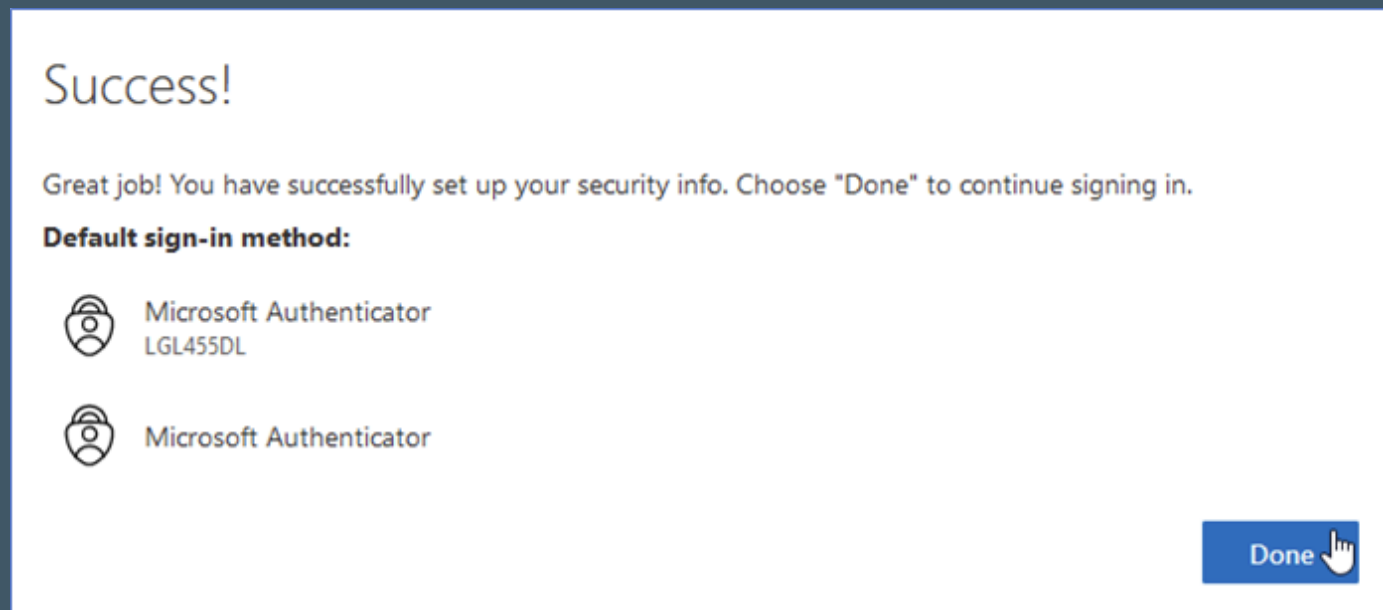


**SOUTHWESTERN**  
AN OREGON COMMUNITY COLLEGE

13/29

## (Microsoft Authenticator Steps)

-> Click Done



-> If the Microsoft Authenticator app is the only MFA device/method you wish to have, your setup is complete!

-> If you'd like to setup an additional MFA device/method, click [here](#)



**SOUTHWESTERN**  
AN OREGON COMMUNITY COLLEGE

14/29


(Other Authenticator Steps)

-> Click "I want to use a different authenticator app"

**Keep your account secure**

Your organization requires you to set up the following methods of proving who you are.

### Microsoft Authenticator



**Start by getting the app**

On your phone, install the Microsoft Authenticator app. [Download now](#)

After you install the Microsoft Authenticator app on your device, choose "Next".

[I want to use a different authenticator app](#)

[Next](#)

[I want to set up a different method](#)





**SOUTHWESTERN**  
AN OREGON COMMUNITY COLLEGE

15/29

(Other Authenticator Steps)

-> Click Next

## Authenticator app



Set up your account

In your app, add a new account.

Back

Next





**SOUTHWESTERN**  
AN OREGON COMMUNITY COLLEGE

16/29

## (Other Authenticator Steps)


- > With the Authenticator app open on your phone, have it scan the QR code
- > Click Next

Authenticator app

Scan the QR code

Use the authenticator app to scan the QR code. This will connect your authenticator app with your account.


After you scan the QR code, choose "Next".



[Can't scan image?](#)

Enter the following into your app:

**Account name:** Southwestern Oregon Community College:8675432@email.socc.edu [Copy](#)

**Secret key:**  112s [Copy](#)

[Back](#) [Next](#)








**SOUTHWESTERN**  
AN OREGON COMMUNITY COLLEGE

17/29

## (Other Authenticator Steps)

- > Type in the code provided from your authenticator app
- > Click Next

Authenticator app



**Enter code**

Enter the 6-digit code shown in the Authenticator app.

123456

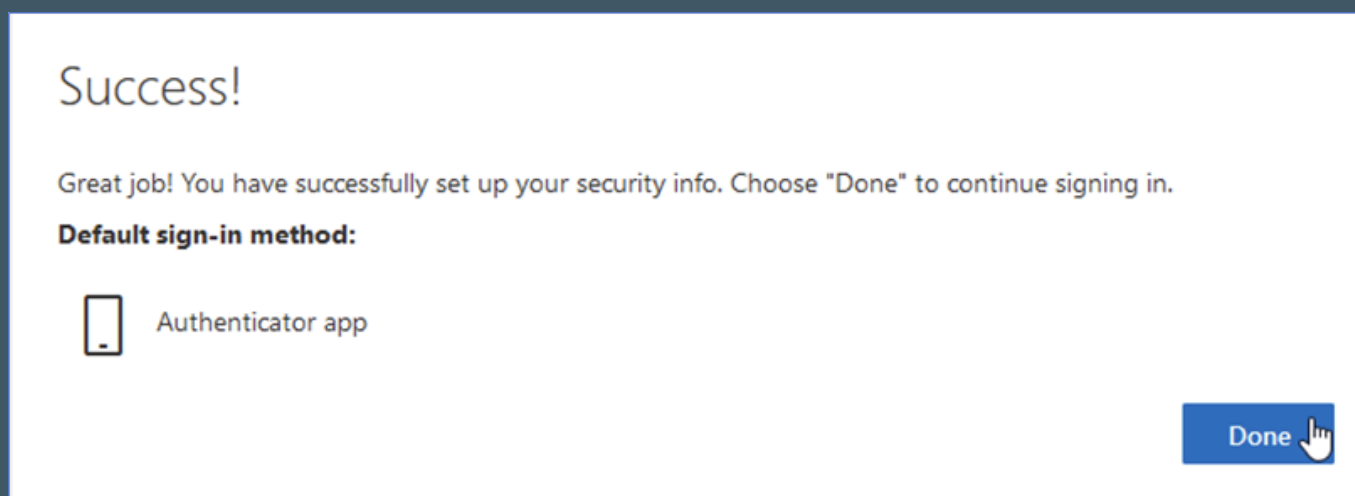




**SOUTHWESTERN**  
AN OREGON COMMUNITY COLLEGE

(Other Authenticator Steps)

-> Click Done



-> If the Other Authenticator app is the only MFA device/method you wish to have, your setup is complete!

-> If you'd like to setup an additional MFA device/method click **here**



**SOUTHWESTERN**  
AN OREGON COMMUNITY COLLEGE

19/29


(Text Message Steps)

-> Click "I want to set up a different method"

**Keep your account secure**

Your organization requires you to set up the following methods of proving who you are.

### Microsoft Authenticator



**Start by getting the app**

On your phone, install the Microsoft Authenticator app. [Download now](#)

After you install the Microsoft Authenticator app on your device, choose "Next".

[I want to use a different authenticator app](#)

[I want to set up a different method](#)

[Next](#)



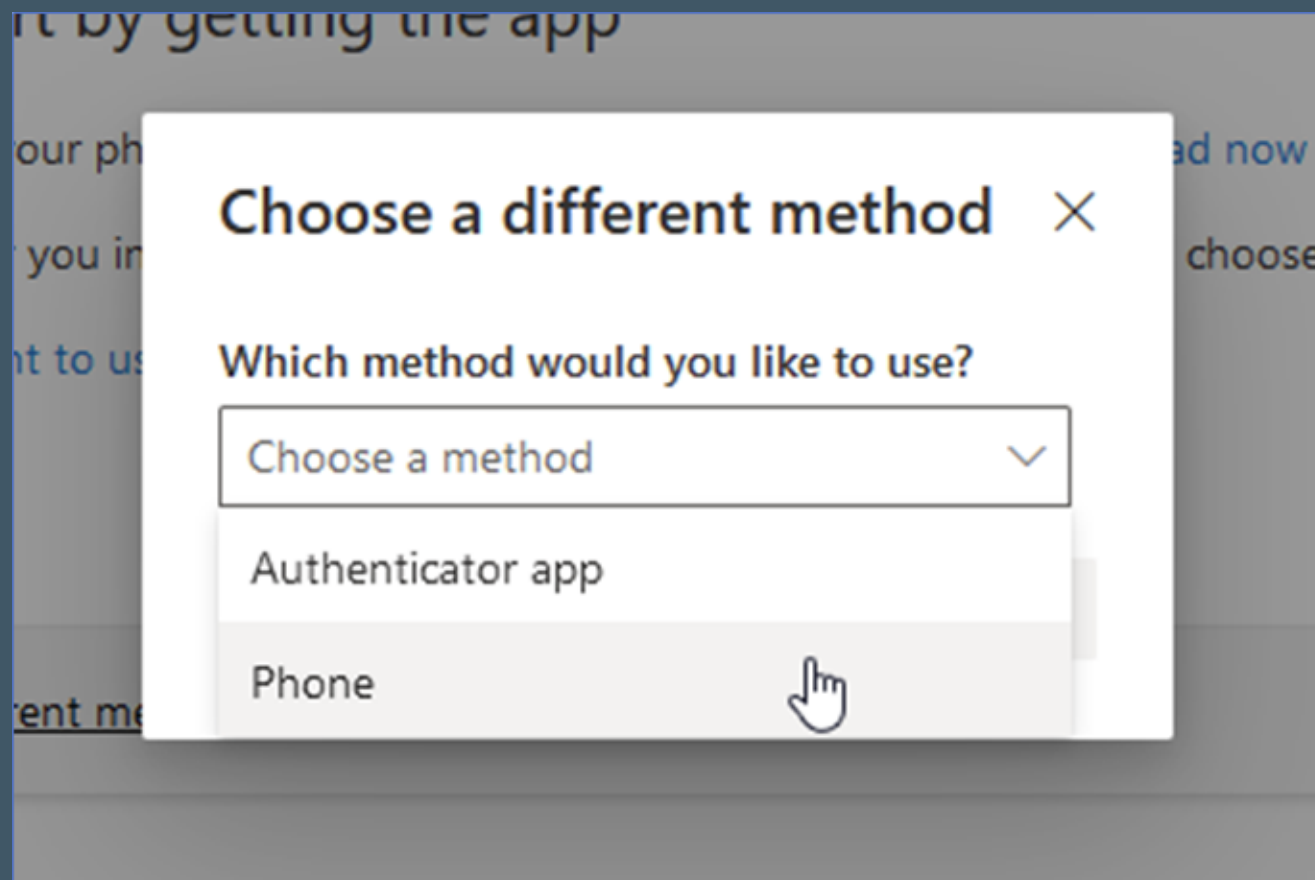


**SOUTHWESTERN**  
AN OREGON COMMUNITY COLLEGE

20/29

(Text Message Steps)

- > Click "Choose a method" drop-down box
- > Click Phone





**SOUTHWESTERN**  
AN OREGON COMMUNITY COLLEGE

21/29

(Text Message Steps)

-> Click Confirm

Choose a different method ×

Which method would you like to use?

Phone ▾

Cancel Confirm





**SOUTHWESTERN**  
AN OREGON COMMUNITY COLLEGE

22/29

## (Text Message Steps)

- > Select the proper country code from the drop-down list
- > Type phone number
- > Click Next

### Phone

You can prove who you are by answering a call on your phone or texting a code to your phone.

What phone number would you like to use?

United States (+1) ▼

5555555

☒ Text me a code  
☐ Call me

Message and data rates may apply. Choosing Next means that you agree to the [Terms of service](#) and [Privacy and cookies statement](#).

Next





**SOUTHWESTERN**  
AN OREGON COMMUNITY COLLEGE

23/29

(Text Message Steps)

- > Type in the code provided from the text message
- > Click Next

## Phone

We just sent a 6 digit code to +1 5555555. Enter the code below.

123456

[Resend code](#)

Back

Next

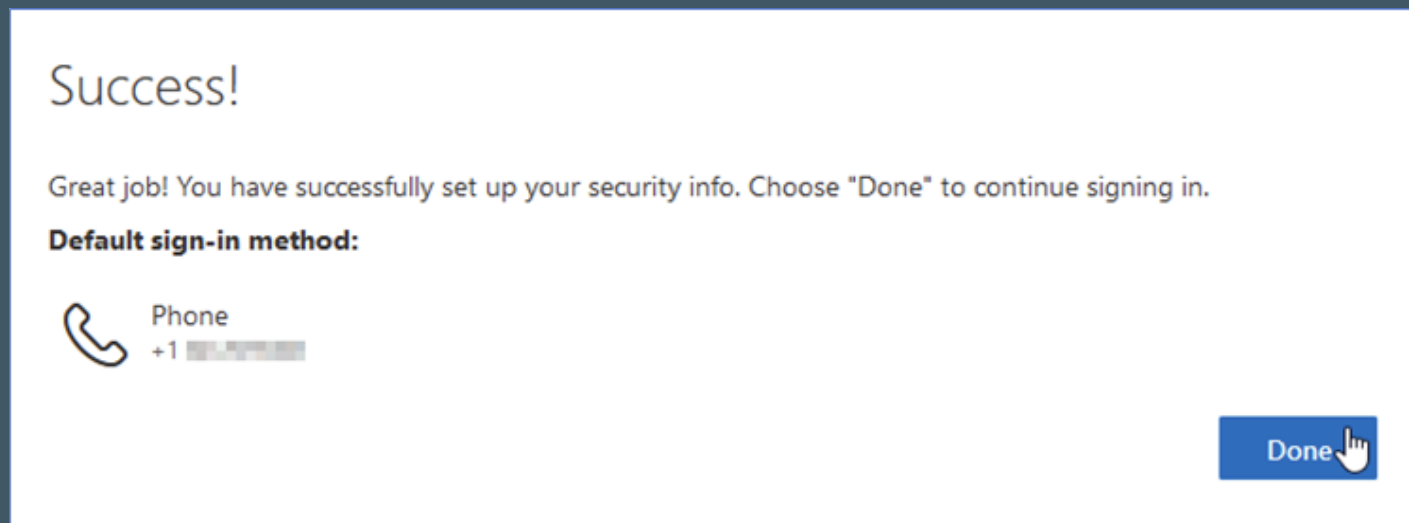




**SOUTHWESTERN**  
AN OREGON COMMUNITY COLLEGE

(Text Message Steps)

-> Click Done



-> If Text Message is the only MFA device/method you wish to have, your setup is complete!

-> If you'd like to setup an additional MFA device/method click **here**





**SOUTHWESTERN**  
AN OREGON COMMUNITY COLLEGE

25/29


(Phone Call Steps)

-> Click "I want to set up a different method"

**Keep your account secure**

Your organization requires you to set up the following methods of proving who you are.

**Microsoft Authenticator**

 **Start by getting the app**

On your phone, install the Microsoft Authenticator app. [Download now](#)

After you install the Microsoft Authenticator app on your device, choose "Next".

[I want to use a different authenticator app](#)

[I want to set up a different method](#)

[Next](#)



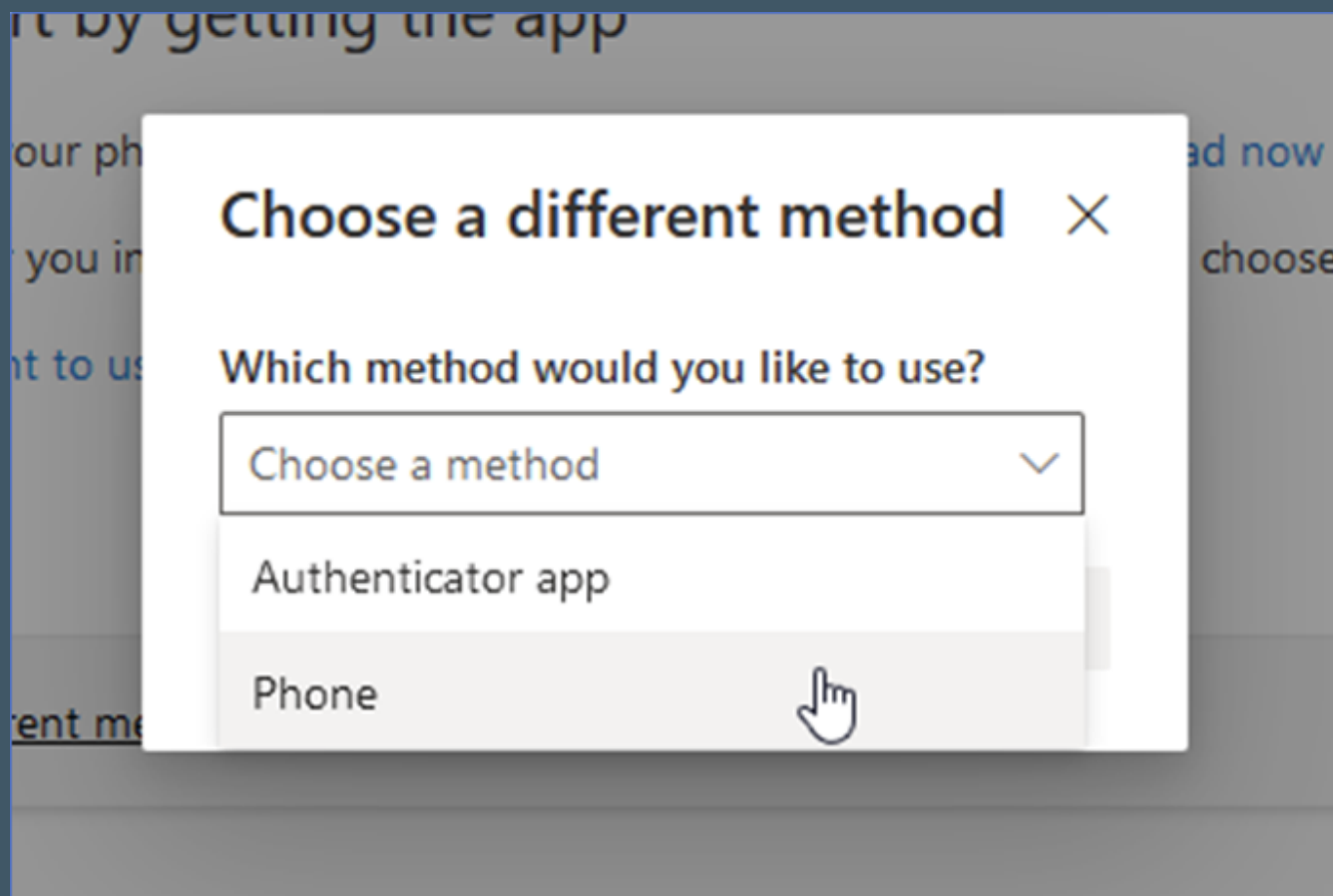


**SOUTHWESTERN**  
AN OREGON COMMUNITY COLLEGE

26/29

(Phone Call Steps)

- > Click "Choose a method" drop-down box
- > Click Phone





**SOUTHWESTERN**  
AN OREGON COMMUNITY COLLEGE


## (Phone Call Steps)

- > Click "Call me" option
- > Select the proper country code from the drop-down list
- > Type phone number
- > Click Next

Phone

You can prove who you are by answering a call on your phone or texting a code to your phone.

What phone number would you like to use?

United States (+1) 

☐ Text me a code

☒ Call me

Message and data rates may apply. Choosing Next means that you agree to the [Terms of service](#) and [Privacy and cookies statement](#).

Next





**SOUTHWESTERN**  
AN OREGON COMMUNITY COLLEGE

28/29

(Phone Call Steps)

-> Answer the phone call from Microsoft and follow their instructions to confirm authorization

Phone

We're calling +1 [REDACTED] now.

Back



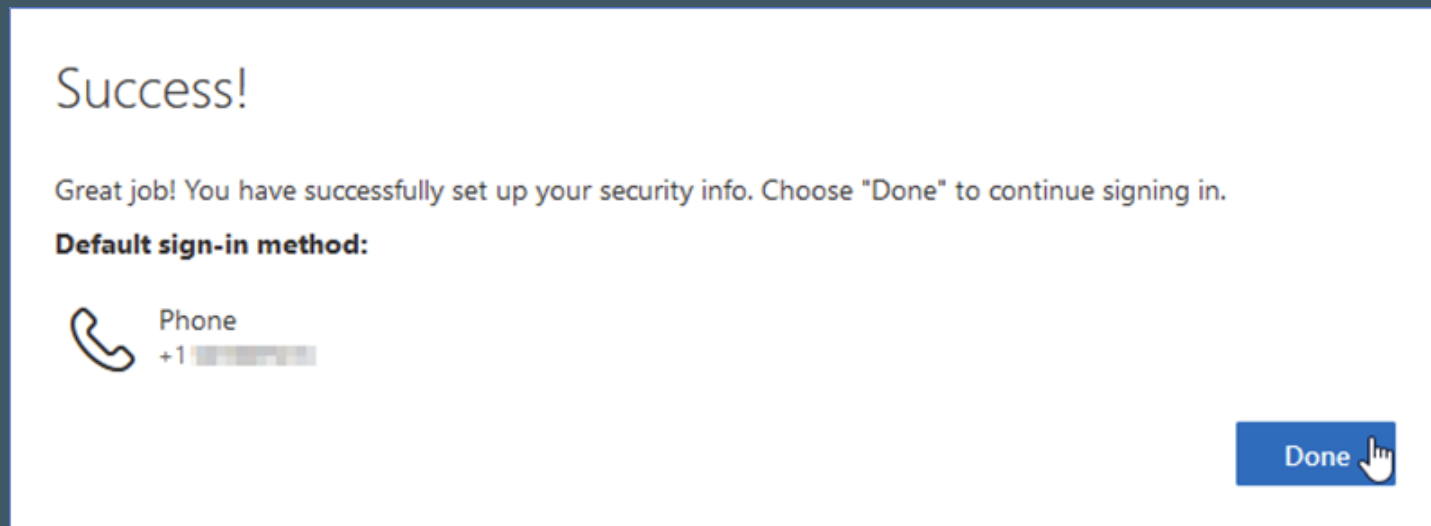


**SOUTHWESTERN**  
AN OREGON COMMUNITY COLLEGE

29/29

(Phone Call Steps)

-> Click Done



-> If Phone Call is the only MFA device/method you wish to have, your setup is complete!

-> If you'd like to setup an additional MFA device/method, click [here](#)